



Dorset House, Dean Park Road, Bournemouth, BH1 1HX

Asking Price

- Two Double Bedrooms
- Spacious Throughout
- Share Of Freehold
- Communal Gardens
- Gas Central Heating

- First Floor Purpose Built Flat
- Separate Garage
- Close To Amenities & Bus Routes
- UPVC Double Glazing
- Viewings Recommended!

£215,000

Dorset House, Dean Park Road, Bournemouth, BH1 1HX

SPACIOUS TWO DOUBLE BEDROOM FLAT WITH GARAGE / LOCATED JUST A SHORT WALK FROM THE TOWN CENTRE & LOCAL BEACH / SHARE OF FREEHOLD >>> Greys Estate Agents are delighted to offer for sale this two bedroom first floor flat situated on Dean Park Road in Bournemouth. The property comprises; Two double bedrooms, lounge / diner, separate kitchen and bathroom. Further benefits include a separate garage, secure phone entry system, UPVC double glazing and gas central heating. For more information, or to arrange a viewing, please contact Greys of Parkstone.



Council Tax Band: C



Lounge / Diner
(6.00m x 3.75m)

Kitchen
(3.65m x 2.75m)

Bedroom One
(4.90m x 3.20m)

Bedroom Two
(3.50m x 3.20m)

Bathroom
(2.40m x 1.90m)

Agents Note

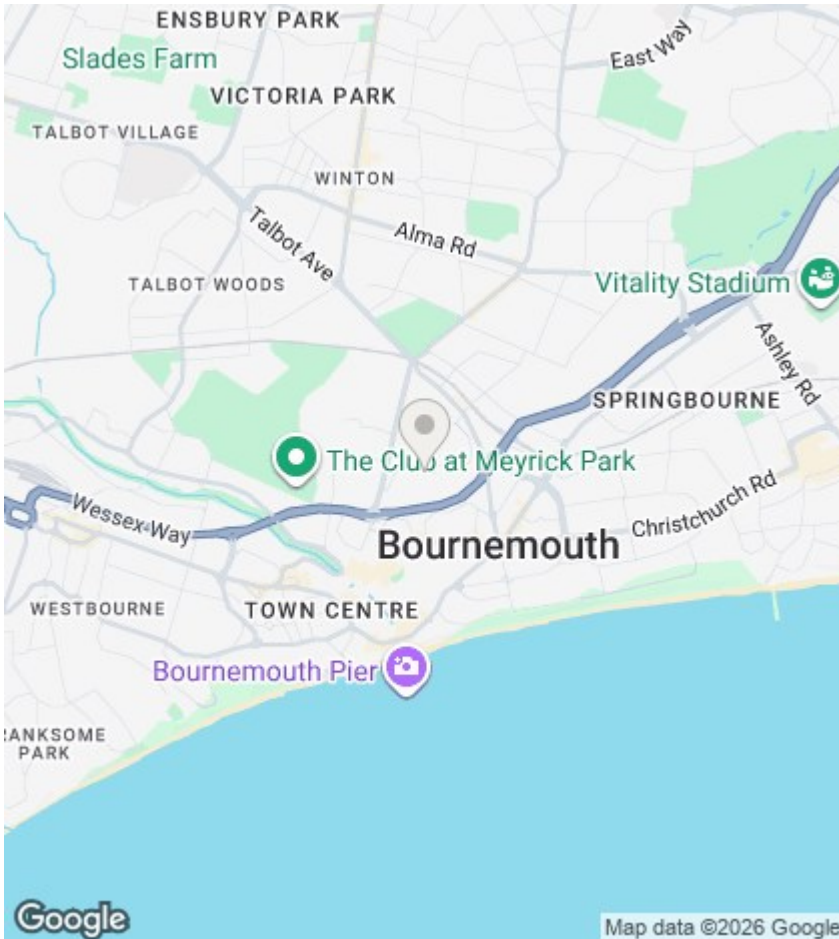
Tenure

Share Of Freehold

Maintenance - £1,560p/a

Ground Rent - N/A





Agents Note

Whilst every attempt has been made to ensure the accuracy of details and measurements contained in these particulars, they are not to be relied upon especially when potential cost could be incurred.

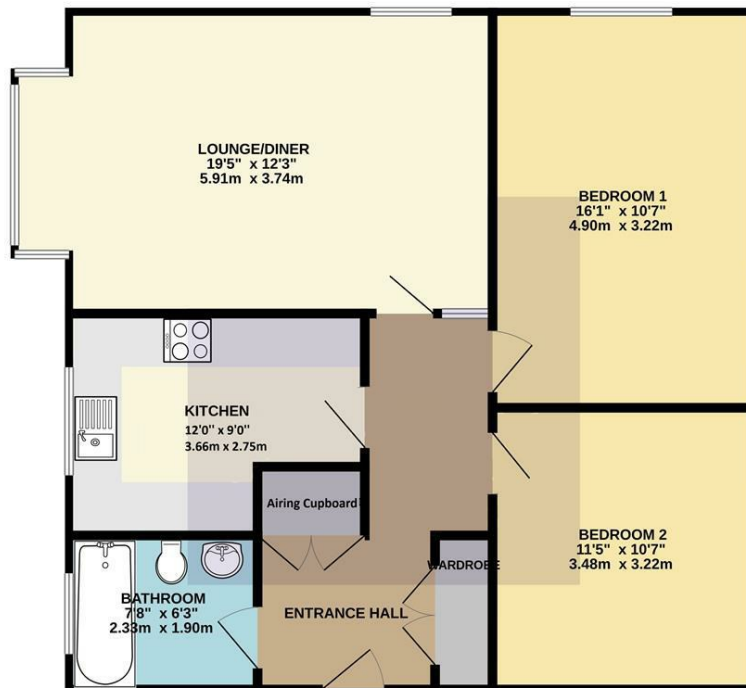
No appliances have been tested so the agent cannot verify that they are in working order. The agent has not seen any legal documentation to verify the legal status of the property. This must be verified by your chosen solicitor.

Viewings

Viewings by arrangement only. Call 01202 749390 to make an appointment.

EPC Rating:

Energy Efficiency Rating		Current	Potential
Very energy efficient - lower running costs			
(92 plus) A			
(81-91) B			
(69-80) C			
(55-68) D			
(39-54) E			
(21-38) F			
(1-20) G			
Not energy efficient - higher running costs			
England & Wales		EU Directive 2002/91/EC	



TOTAL FLOOR AREA: 779 sq.ft. (72.4 sq.m.) approx.
 Whilst every attempt has been made to ensure the accuracy of the floorplan contained here, measurements of doors, windows, rooms and any other items are approximate and no responsibility is taken for any error, omission or mis-statement. This plan is for illustrative purposes only and should be used as such by any prospective purchaser. The services, systems and appliances shown have not been tested and no guarantee as to their operability or efficiency can be given.
 Made with Metropix C2020

