



Caxton End, Bourn Cambridge  
**£825,000** Freehold

**Sharman  
Quinney**

# Key Features



- Substantially Extended Detached Family Home
- Beautifully Presented Throughout
- Generous Sized Garden.
- Approximately 2,369 sq. ft. of Accommodation
- Integral Garage and Substantial Workshop

Occupying a generous plot within a popular residential location, this substantially extended five-bedroom detached family home offers over 2,360 sq. ft. of versatile accommodation, beautifully presented throughout and perfectly suited to modern family living.

The property immediately impresses with its attractive frontage and ample driveway parking, leading to an integral garage and extensive workshop. Internally, the accommodation is centred around a truly remarkable open-plan living and dining space stretching in excess of 42ft, creating a superb environment for both everyday family life and entertaining. Flooded with natural light and enjoying direct access to the rear garden through wide bi-fold doors, this impressive room seamlessly connects indoor and outdoor living.



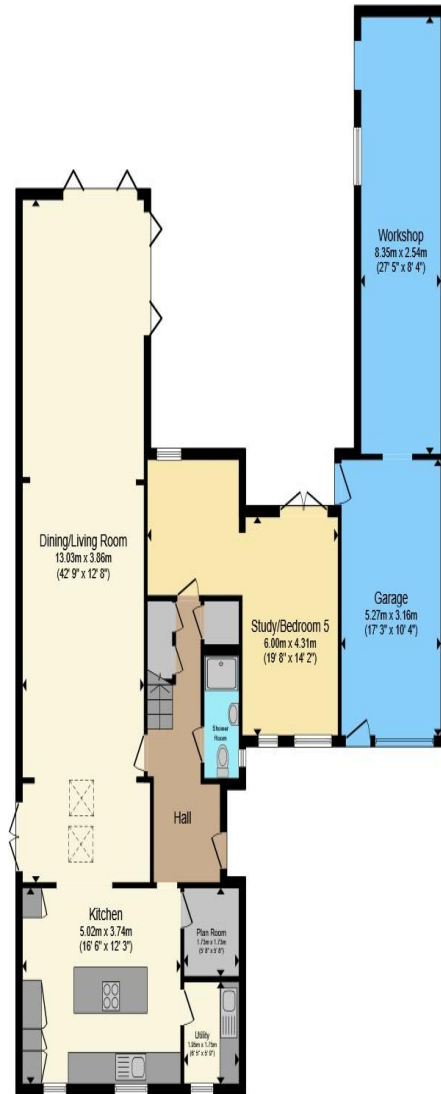
The heart of the home is the contemporary kitchen/breakfast room, thoughtfully designed with a central island, extensive storage, and workspace, complemented by a separate utility room and pantry. The ground floor further benefits from a spacious study which could easily serve as a fifth bedroom, along with a convenient shower room, making it ideal for multi-generational living or those working from home.

To the first floor, the generous principal bedroom enjoys its own en-suite shower room, while three further well-proportioned double bedrooms are served by a stylish family bathroom.

Outside, the beautifully maintained rear garden provides a wonderful setting for relaxing and entertaining, featuring extensive patio areas, a large lawn, mature planting, and excellent levels of privacy. A covered seating area creates the perfect spot for al fresco dining, while the substantial workshop offers fantastic potential for hobbies, storage, or business use.

Combining exceptional space, flexible accommodation, and high-quality presentation throughout, this outstanding family home represents a rare opportunity to acquire a property of genuine scale and versatility.





**Ground Floor**



**First Floor**

Total floor area 220.1 m<sup>2</sup> (2,369 sq.ft.) approx

This floor plan is for illustrative purposes only. It is not drawn to scale. Any measurements, floor areas (including any total floor area), openings and orientation are approximate. No details are guaranteed, they cannot be relied upon for any purpose and they do not form part of any agreement. No liability is taken for any error, omission or misstatement. A party must rely upon its own inspection(s). Powered by [www.propertybox.io](http://www.propertybox.io)

**Sharman  
Quinney**

To view this property call Sharman Quinney on:  
**01954 710620**

# Selling your property?

Contact us to arrange a **FREE** home valuation.

 01954 710620

 13 High Street, Cambourne, CAMBRIDGE,  
Cambridgeshire, CB23 6JX

 [cambourne@sharmanquinney.co.uk](mailto:cambourne@sharmanquinney.co.uk)

 [www.sharmanquinney.co.uk](http://www.sharmanquinney.co.uk)



 SCAN ME



Sharman Quinney Holdings Limited is registered in England and Wales under company number 4174227, Registered Office is Cumbria House, 16-20 Hockliffe Street, Leighton Buzzard, Bedfordshire, LU7 1GN. VAT Registration Number is 500 2481 05.

1: These particulars do not constitute part or all of an offer or contract. 2: The measurements indicated are supplied for guidance only and as such must be considered incorrect. 3: Potential buyers are advised to recheck the measurements before committing to any expense. 4: Sharman Quinney has not tested any apparatus, equipment, fixtures, fittings or services and it is the buyers interests to check the working condition of any appliances. 5: Sharman Quinney has not sought to verify the legal title of the property and buyers must obtain verification from their legal representative. 6: Intending purchasers will be asked to produce identification documentation at a later stage and we would ask your co-operation in order that there will be no delay in agreeing the sale. Ref: CSQ204222 - 0002

