



MARKHAM STREET
CHELSEA

JACKSON-STOPS 

MARKHAM STREET CHELSEA, SW3

ASKING PRICE: £8,000 PCM

A four bedroom, family house with excellent living space and a large private roof terrace. Located near the boutiques of Chelsea Green and the amenities of Kings Road.

The property benefits from wooden flooring in the reception and a private garage. Just 0.5 miles from South Kensington Underground Station and 0.7 miles from Sloane Square Underground Station.

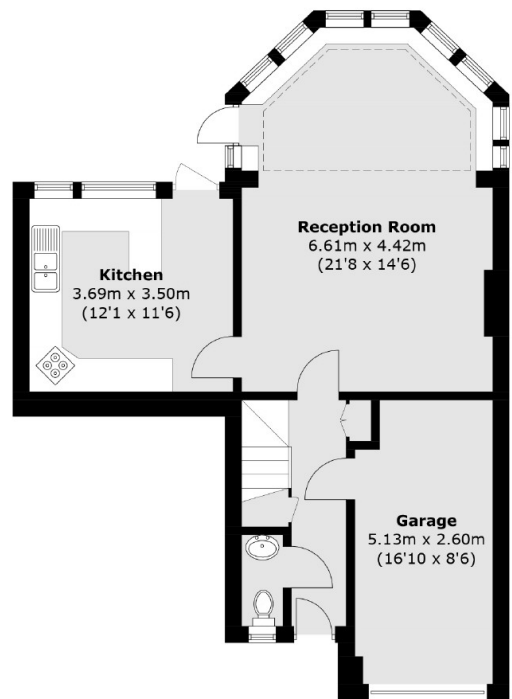


KEY FEATURES

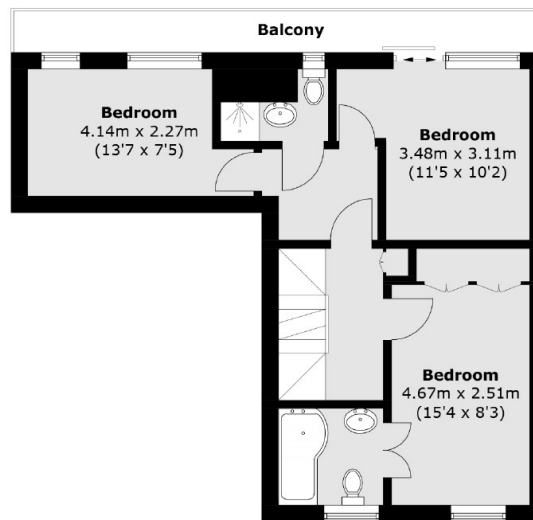
- Four Bedrooms
- Three Bathrooms
- Kitchen
- Reception
- Garage
- Tax Band: H



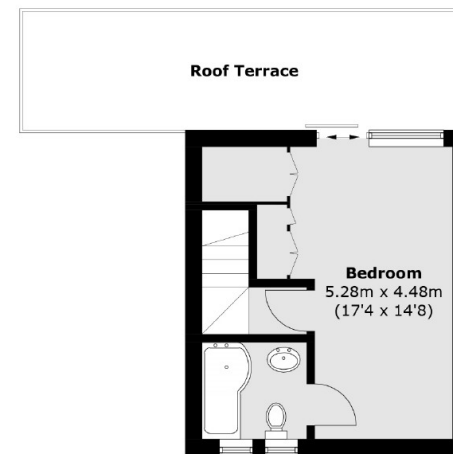




Ground Floor



First Floor



Second Floor

Total area (approx.): 134.5 sq. m (1447.7 sq. ft)
Balcony / Roof Terrace : 24.5 sq. m (263.7 sq. ft)

Energy Rating: D. We aim to make our particulars both accurate and reliable. However they are not guaranteed; nor do they form part of an offer or contract. If you require clarification on any points then please contact us, especially if you are travelling some distance to view. Please note that appliances and heating systems have not been tested and therefore no warranties can be given as to their good working order.

ASKING PRICE: £8,000 PCM

PIMLICO

020 7828 4243

pimlicolettings@jackson-stops.com

jackson-stops.co.uk

JACKSON-STOPS 