

Pinkmove
For Sale
01633 746088



Walton Close

Offers in the region of £180,000

- Spacious End Terrace Property
- Lounge/Diner
- Family Bathroom
- Close to Local Amenities
- Great Road Links
- EPC Rating: D



3 1 1

Pinkmove

01633 746088
team@pinkmove.co.uk



About the property

We are delighted to offer this spacious three-bedroom end-terrace property, ideally located on Walton Close in Newport. The property enjoys a quiet residential setting while still benefiting from access to local amenities and excellent transport links.

Set away from the main road, the property is approached via a gated entrance, opening into a fully paved front courtyard, ideal for bin storage or potted plants, creating a neat, low-maintenance frontage.

Upon entering, you are welcomed into the hallway, providing access to the first floor via the staircase and leading into the main living accommodation. The lounge/diner is a generous and bright space, finished in neutral décor. There is ample room for both living furnishings and a dining table, making it ideal for everyday living and entertaining.

The kitchen is a generous space with ample wood effect unit storage and glossy worktops. There is space for large under counter appliances or perhaps a breakfast bar if required. The kitchen also offers an alternative access into the rear garden. Upstairs you have two double bedrooms overlooking the rear garden and providing built in storage space. You also have a good sized single room. The family bathroom is also located upstairs, a generous modern space. It features a W.C, hand basin and bath with over-head shower. Outside you have a fully enclosed low maintenance patio space that spans over two tiers.





Accommodation

Agents Note:

The property is of non- standard construction - Laing easiform construction, please seek confirmation of lending ability and liaise with your conveyancer.

Living/Dining Room

Kitchen

Bedroom 1

Bedroom 2

Bedroom 3

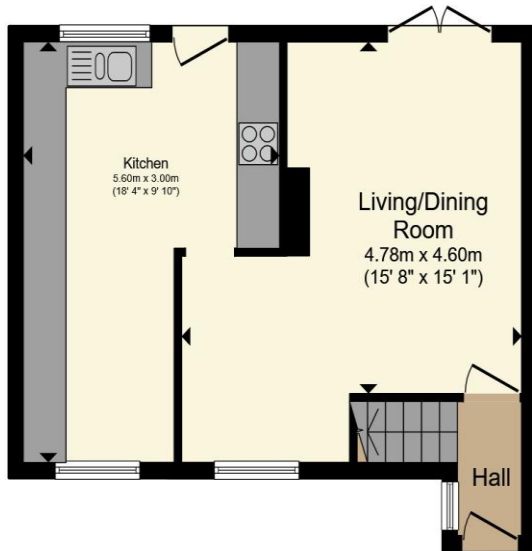
Bathroom

01633 746088

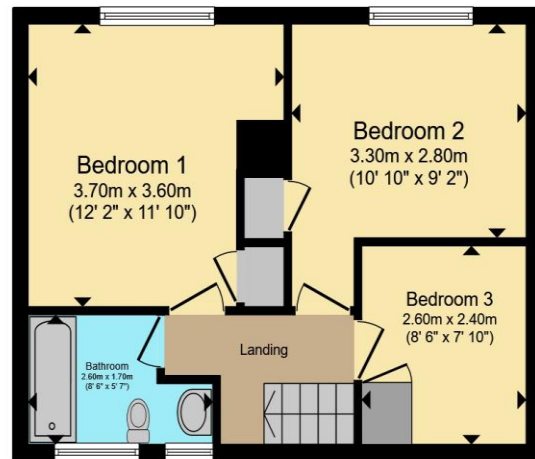
team@pinkmove.co.uk

Pinkmove

Floorplan



Ground Floor



First Floor

Total floor area 77.9 sq.m. (838 sq.ft.) approx

This floor plan is for illustrative purposes only. It is not drawn to scale. Any measurements, floor areas (including any total floor area), openings and orientation are approximate. No details are guaranteed, they cannot be relied upon for any purpose and they do not form part of any agreement. No liability is taken for any error, omission or misstatement. A party must rely upon its own inspection(s). Powered by www.localagent.com

Pinkmove

Important Information

Note while we endeavour to make our sales details accurate and reliable, if there is any point which is of particular interest to you, please contact the office and we will be pleased to confirm the position for you. We have not personally tested any apparatus, equipment, fixtures, fittings or services and cannot verify they are in working order or fit for their purposes. Nothing in these particulars is intended to indicate that carpets or curtains, furnishings or fittings, electrical goods (whether wired or not). Gas fires or light fittings or any other fixtures not expressly included form part of the property offered for sale. This computer generated Floorplan, if applicable, is intended as a general guide to the layout and design of the property. It is not to scale and should not be relied upon for dimensions. Tenure: We cannot confirm the tenure of the property as we have not had access to the legal documents. The buyer is advised to obtain verification from their solicitor or surveyor.

Peter Alan Limited is registered in England and Wales under company number 2073153. Registered Office is Cumbria House, 16-20 Hockliffe Street, Leighton Buzzard, Bedfordshire, LU7 1GN. VAT Registration Number is 500 2481 05. For activities relating to regulated mortgages and non-investment insurance contracts, Peter Alan Limited is an appointed representative of Connells Limited which is authorised and regulated by the Financial Conduct Authority. Connells Limited's Financial Services Register number is 302221. Most buy-to-let

