



Derllwyn Road, £300,000

- Detached 4 Bedroom Family Home
- Three spacious reception rooms
- Off-street parking
- Council Tax Band E
- Characterful family home retaining many original character features.
- EPC Rating: G



 4  1  3



About the property

Bryngolwg (Hill View) is a large, traditional, detached stone-built home brimming with character and charm. Occupying a generous corner plot on the sought-after Derllwyn Road, this much-loved family home is offered for sale with no ongoing chain, presenting a rare opportunity to acquire a substantial period property with immense potential. The home is packed with attractive period features throughout, including paneled bay windows and open fireplaces to all reception rooms, creating a warm and inviting atmosphere while retaining its traditional appeal.



The accommodation comprises a welcoming entrance hall and three separate reception rooms. Two of the reception rooms benefit from bay windows to the front of the property, while a further spacious lounge is situated to the rear, offering flexible family living space. The property also features a kitchen and a useful utility room, providing access directly onto the rear parking area.

To the first floor, there are four bedrooms, including three generous double bedrooms and a fourth single bedroom, together with a spacious family bathroom.





Accommodation

Entrance Hall

Living Room

11' 5" plus bay x 11' 4" (3.48m plus bay x 3.45m)

Reception Room

12' 1" max x 10' 1" max (3.68m max x 3.07m max)

Lounge

11' 2" x 9' 10" (3.40m x 3.00m)

Kitchen

11' 2" x 10' 7" (3.40m x 3.23m)

Utility Room

10' 2" x 6' 2" (3.10m x 1.88m)

First Floor

Landing

Bedroom One

11' 11" x 10' 6" (3.63m x 3.20m)

Bedroom Two

10' 6" x 9' 7" (3.20m x 2.92m)

Bedroom Three

12' 6" x 8' 11" (3.81m x 2.72m)

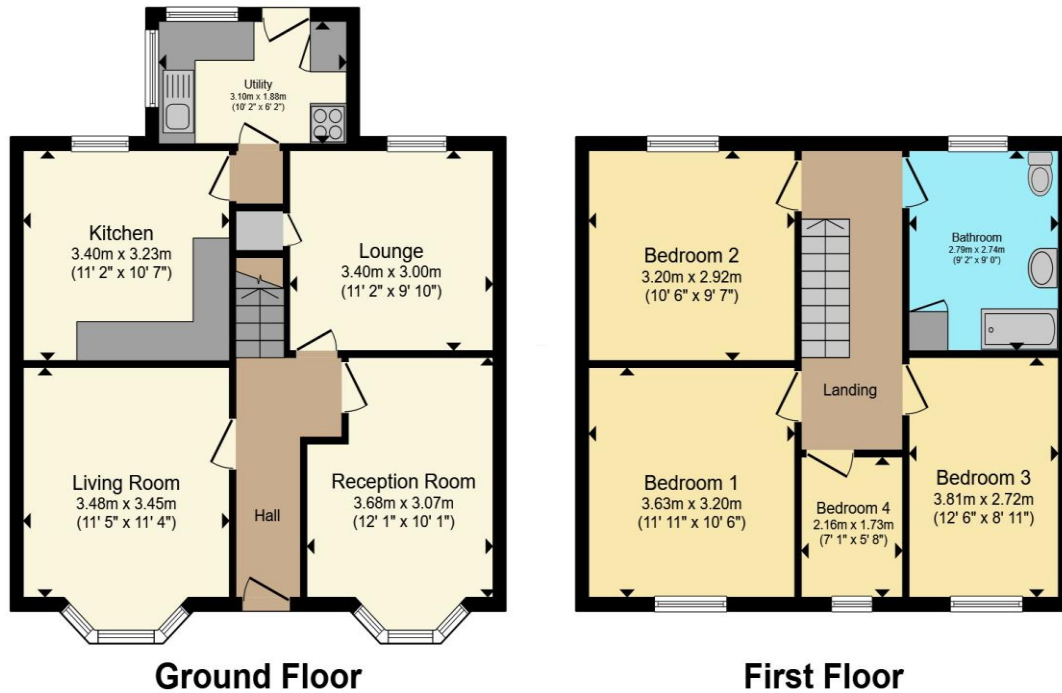
Bedroom Four

7' 1" x 5' 8" (2.16m x 1.73m)

Bathroom

9' 2" x 9' (2.79m x 2.74m)

Floorplan



Total floor area 113.8 m² (1,225 sq.ft.) approx

This floor plan is for illustrative purposes only. It is not drawn to scale. Any measurements, floor areas (including any total floor area), openings and orientation are approximate. No details are guaranteed, they cannot be relied upon for any purpose and they do not form part of any agreement. No liability is taken for any error, omission or misstatement. A party must rely upon its own inspection(s). Powered by www.propertybox.io



Important Information

Note while we endeavour to make our sales details accurate and reliable, if there is any point which is of particular interest to you, please contact the office and we will be pleased to confirm the position for you. We have not personally tested any apparatus, equipment, fixtures, fittings or services and cannot verify they are in working order or fit for their purposes. Nothing in these particulars is intended to indicate that carpets or curtains, furnishings or fittings, electrical goods (whether wired or not). Gas fires or light fittings or any other fixtures not expressly included form part of the property offered for sale. This computer generated Floorplan, if applicable, is intended as a general guide to the layout and design of the property. It is not to scale and should not be relied upon for dimensions. Tenure: We cannot confirm the tenure of the property as we have not had access to the legal documents. The buyer is advised to obtain verification from their solicitor or surveyor.

Peter Alan Limited is registered in England and Wales under company number 2073153, Registered Office is Cumbria House, 16-20 Hockliffe Street, Leighton Buzzard, Bedfordshire, LU7 1GN. VAT Registration Number is 500 2481 05. For activities relating to regulated mortgages and non-investment insurance contracts, Peter Alan Limited is an appointed representative of Connells Limited which is authorised and regulated by the Financial Conduct Authority. Connells Limited's Financial Services Register number is 302221. Most buy-to-let

