

# SNELLERS

ESTATE AGENTS



**Somerset Road, TW11**

**£3,300 PCM**

A truly outstanding three bedroom period family house, situated in a fantastic residential street in central Teddington. The house offers over 1,000 sq.ft of immaculately presented living space over two floors and has a beautiful garden with side access.



On the ground floor at the front of the house is an elegant reception room which has a bay window and shutters. At the rear of the house there is a large open plan kitchen/dining/family room providing plenty of space for entertaining or for your family just to relax.

On the first floor, there are three bedrooms. At the rear of the house there is a spacious family bathroom with a recently fitted contemporary style suite.

Externally, there is a delightful landscaped garden with artificial lawn and a decked area perfect for entertaining.

The house is located in a popular residential street, with St.Marys & St. Peters school on your doorstep and both Teddington and Fulwell railway stations are both located within a mile.

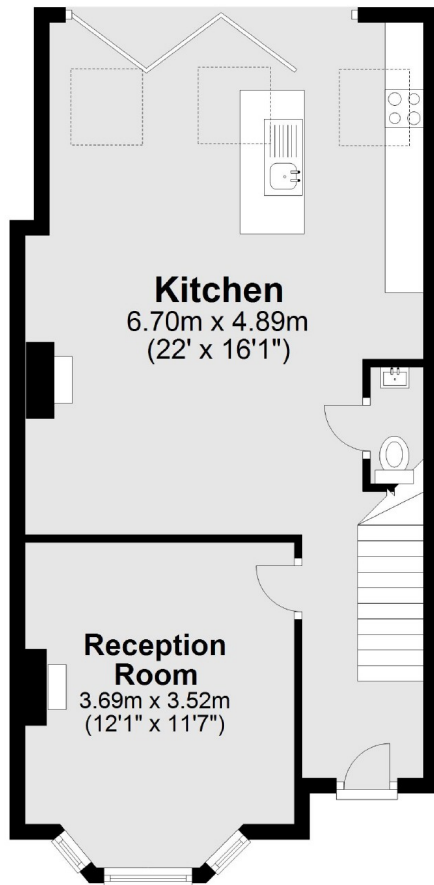
- Three Bedrooms • Kitchen/Dining • Beautiful Garden •
- Central Location • Street Parking • Stunning Open Plan •



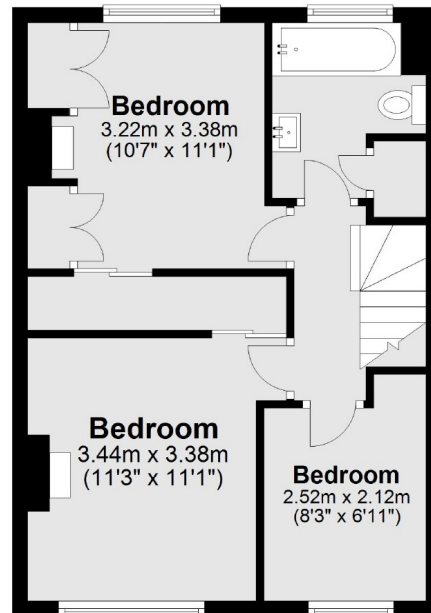
# SNELLERS

ESTATE AGENTS

## Ground Floor



## First Floor



Total area: approx. 93.2 sq. metres (1002.9 sq. feet)

Snellers Teddington Lettings  
74 Broad Street  
Teddington  
TW11 8QX  
020 8614 6140  
teddingtonlettings@snellers.co.uk

Energy Rating: D We aim to make our particulars both accurate and reliable. However they are not guaranteed; nor do they form part of an offer or contract. If you require clarification on any points then please contact us, especially if you're traveling some distance to view. Please note that appliances and heating systems have not been tested and therefore no warranties can be given as to their good working order