



**The Green, MARCH PE15 8JD**

*welcome to*

**The Green, MARCH**

Stunning Family Home - Four Bedrooms - En Suite to Bedroom One - Lounge plus Separate Dining Room  
Office/Study - Kitchen with Utility Room - Enclosed Rear Garden - Double Garage \*\* Viewing Recommended



**Storm Porch**

to

**Entrance Door****Hall**

Stairs leading off. Laminate floor. Radiator.

**W.C**

Laminate floor. Radiator. Low level wc. Vanity wash hand basin. Extractor fan.

**Office/Study**

Window to rear. Radiator. Laminate floor.

**Lounge**

Bow window to front. Laminate floor. Feature fireplace with marble effect hearth and wood surround. TV point. Double doors to

**Dining Room**

Bi-folding doors to garden. Laminate floor. Radiator.

**Kitchen**

Window to rear. Single drainer sink with mixer taps, 1 1/4 bowl. Gas hob, electric oven with cooker hood above. Integrated dishwasher. Integrated fridge. Tiled floor. Wall units with matching work surfaces and storage under.

**Utility**

Door to side. Door to garage. Single drainer sink with mixer taps. Radiator. Tiled floor.

**Stairs To First Floor Landing**

Loft access. Airing cupboard housing hot water tank.

**Bedroom One**

Window to rear. Radiator. Range of fitted wardrobes to one wall. TV point. Laminate floor.

**En Suite**

Window to rear. Tiled floor. Shaver point. Vanity wash hand basin with storage under. Low level wc. Shower cubicle. Heated towel rail.

**Bedroom Two**

Window to front. Radiator.

**Bedroom Three**

Window to front. Radiator.

**Bedroom Four**

Window to rear. Radiator.

**Bathroom**

(Recently fitted) Window to side. Tiled floor. Low level wc. Panelled bath with shower above. Vanity wash hand basin with storage under. Heated towel rail. Tiled walls.

**Outside**

Front garden is open plan and hedged. Drive to garage.

Rear garden is enclosed with patio area. Outside sockets. Outside lights. Gated access to front.

**Double Garage**

Up and over door. Electric and lighting. Gas central heating boiler. Door to utility.



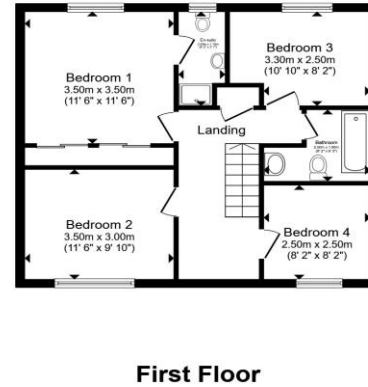
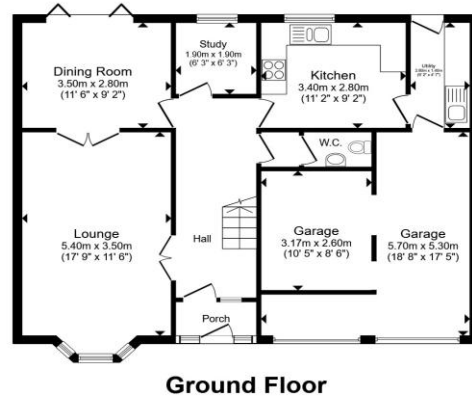
**view this property online** [williamhbrown.co.uk/Property/MCH113960](http://williamhbrown.co.uk/Property/MCH113960)



welcome to  
**The Green, MARCH**

- Four Bedroom Detached House
- En Suite to Bedroom One
- Kitchen plus Utility Room
- Lounge plus Separate Dining Room
- Office/Study
- Double Garage
- Convenient to Town Centre

Tenure: Freehold  
 EPC Rating: D  
 Council Tax Band: D



offers in excess of  
**£340,000**

Total floor area 145.4 m<sup>2</sup> (1,565 sq.ft.) approx  
 This floor plan is for illustrative purposes only. It is not drawn to scale. Any measurements, floor areas (including any total floor area), openings and orientation are approximate. No details are guaranteed, they cannot be relied upon for any purpose and they do not form part of any agreement. No liability is taken for any error, omission or misstatement. A party must rely upon its own inspection(s). Powered by www.propertybox.io



Please note the marker reflects the  
 postcode not the actual property

**view this property online** [williamhbrown.co.uk/Property/MCH113960](http://williamhbrown.co.uk/Property/MCH113960)



Property Ref:  
 MCH113960 - 0003

1. MONEY LAUNDERING REGULATIONS Intending purchasers will be asked to produce identification documentation at a later stage and we would ask for your co-operation in order that there is no delay in agreeing the sale. 2. These particulars do not constitute part or all of an offer or contract. 3. The measurements indicated are supplied for guidance only and as such must be considered incorrect. Potential buyers are advised to recheck measurements before committing to any expense. 4. We have not tested any apparatus, equipment, fixtures or services and it is in the buyers interest to check the working condition of any appliances. 5. Where an EPC, or a Home Report (Scotland only) is held for this property, it is available for inspection at the branch by appointment. If you require a printed version of a Home Report, you will need to pay a reasonable production charge reflecting printing and other costs. 6. We are not able to offer an opinion either written or verbal on the content of these reports and this must be obtained from your legal representative. 7. Whilst we take care in preparing these reports, a buyer should ensure that his/her legal representative confirms as soon as possible all matters relating to title including the extent and boundaries of the property and other important matters before exchange of contracts.



**01354 654545**



[march@williamhbrown.co.uk](mailto:march@williamhbrown.co.uk)



34 High Street, MARCH, Cambridgeshire, PE15 9JR



**[williamhbrown.co.uk](http://williamhbrown.co.uk)**