



ABBEVILLE ROAD, SW4

£5,100 PCM

- Terraced house
- Four double bedrooms
- Private garden
- Separate kitchen
- Abbeville Village
- Energy rating: D

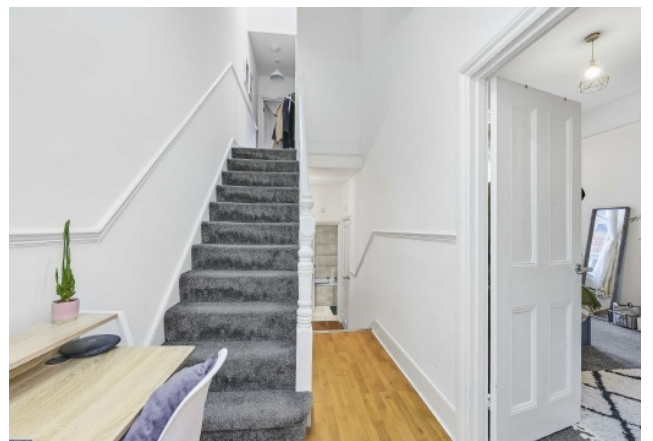




ABOUT THE HOME

A four bedroom, two bathroom Victorian terraced house arranged over three floors in the popular Abbeville Village. Newly refurbished and benefiting from a private garden, this property is suitable for a family or professional sharers.

Abbeville Road runs through the heart of Abbeville Village, with its boutique shops, restaurants and cafés. The property is ideally located for the green open spaces of Clapham Common, Old Town and the high street, with excellent transport options including Clapham Common (Northern line) Underground (0.4 mile) serving the City and West End, and numerous bus routes running close by.







Main area: Approx. 165.5 sq. metres (1781.4 sq. feet)
 Plus balconies, approx. 1.7 sq. metres (18.7 sq. feet)

JACKSONS CLAPHAM

73 Abbeville Road, London,
 SW4 9JN
 Sales: 020 8487 3177
 Lettings: 020 8487 3178

Energy Rating: D We aim to make our particulars both accurate and reliable. However they are not guaranteed; nor do they form part of an offer or contract. If you require clarification on any points then please contact us, especially if you're traveling some distance to view. Please note that appliances and heating systems have not been tested and therefore no warranties can be given as to their good working order.