



Elmwood House, Crescent Road, Enfield, EN2 7AR

welcome to

Elmwood House, Crescent Road, Enfield

Barnfields are delighted to offer for sale this fantastic two bedroom, two bathroom raised ground floor luxury apartment in a most sought after location close to Enfield Chase Station (Moorgate Line), local shops on Windmill Hill, bus routes to Oakwood Tube Station and Enfield Town is also close by. Benefitting from a Share of the Freehold, a sunny South facing terrace with views over the City skyline and secure underground parking, this superb chain free property must be viewed to be fully appreciated.



Communal Hallway

An immaculate entrance hall with lift service to all floors.

Flat Door

Opens to:-

Hallway

Wood flooring, radiator, two storage cupboards.

Lounge

21' 11" x 14' 2" (6.68m x 4.32m)

Wood flooring, radiator, double glazed windows and doors opening to a delightful Southerly facing paved terrace with fantastic views over the communal garden and the London skyline.

Kitchen

14' 4" x 8' 8" (4.37m x 2.64m)

Range of fitted wall and base units with granite worktops and upstands, undermount sink, gas hob with extractor above, built-in double oven, microwave, fridge/ freezer, washing machine and dishwasher, tiled floor, double glazed window and doors to terrace.

Bedroom One

15' 6" x 11' 8" (4.72m x 3.56m)

Wood flooring, double glazed window to rear, range of beautifully fitted wardrobes and drawer units, radiator, door to:-

En-Suite

Panelled bath with shower attachment, WC, hand basin surrounded by a range of built-in cupboards, spotlights, fully tiled walls and floor.

Bedroom Two

10' 10" x 8' 5" (3.30m x 2.57m)

Wood flooring, range of built-in wardrobes and drawers, radiator, double glazed windows to rear.

Shower Room

Pedestal wash hand basin, fully tiled step in shower unit, WC, large built-in storage cupboard, fully tiled walls and floor, spotlight.

Underground Parking

The property benefits from its own allocated secure parking space plus a storage locker and provision for an EV charging unit.

Communal Gardens

Well manicured communal gardens to the rear.



view this property online barnfields.co.uk/Property/ENF106006







welcome to

Elmwood House, Crescent Road, Enfield

- Two Bedrooms & Two Bathrooms
- Share Of Freehold
- 21ft Lounge
- Modern Fitted Kitchen
- South Facing Terrace

Tenure: Leasehold EPC Rating: Awaiting

Council Tax Band: E Service Charge: 3300.00

Ground Rent: Ask Agent

This is a Leasehold property with details as follows; Term of Lease 999 years from 01 Jan 2003. Should you require further information please contact the branch. Please Note additional fees could be incurred for items such as Leasehold packs.

£575,000



Please note the marker reflects the postcode not the actual property

check out more properties at [barnfields.co.uk](https://www.barnfields.co.uk)



Property Ref:
ENF106006 - 0001

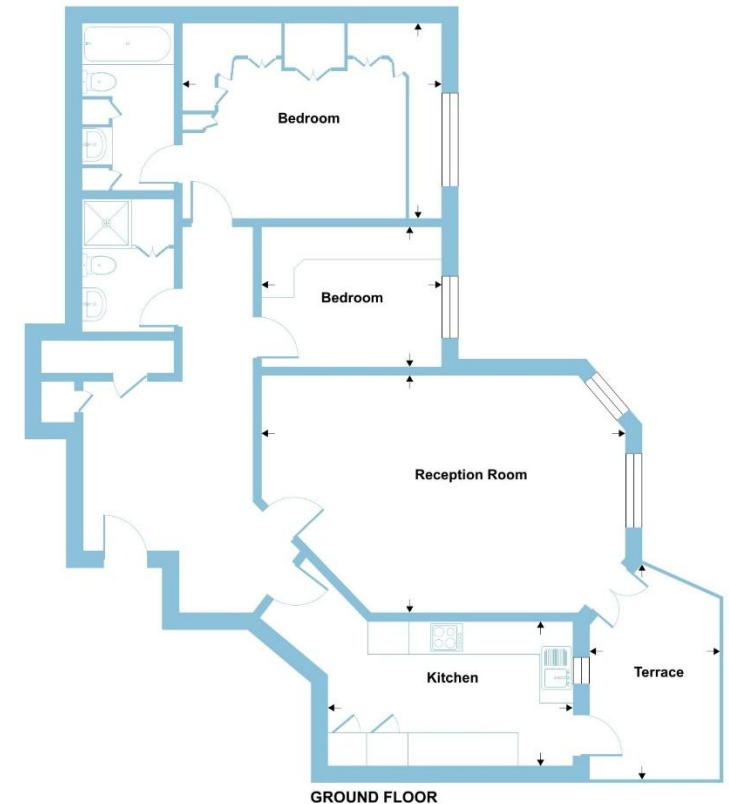
1. MONEY LAUNDERING REGULATIONS Intending purchasers will be asked to produce identification documentation at a later stage and we would ask for your co-operation in order that there is no delay in agreeing the sale. 2. These particulars do not constitute part or all of an offer or contract. 3. The measurements indicated are supplied for guidance only and as such must be considered incorrect. Potential buyers are advised to recheck measurements before committing to any expense. 4. We have not tested any apparatus, equipment, fixtures or services and it is in the buyers interest to check the working condition of any appliances. 5. Where an EPC, or a Home Report (Scotland only) is held for this property, it is available for inspection at the branch by appointment. If you require a printed version of a Home Report, you will need to pay a reasonable production charge reflecting printing and other costs. 6. We are not able to offer an opinion either written or verbal on the content of these reports and this must be obtained from your legal representative. 7. Whilst we take care in preparing these reports, a buyer should ensure that his/her legal representative confirms as soon as possible all matters relating to title including the extent and boundaries of the property and other important matters before exchange of contracts.

Barnfields is a trading name of Sequence (UK) Limited which is registered in England and Wales under company number 4268443, Registered Office is Cumbria House, 16-20 Hockliffe Street, Leighton Buzzard, Bedfordshire, LU7 1GN. VAT Registration Number is 500 2481 05.

Crescent Road, Enfield, EN2

Approximate Area = 1038 sq ft / 96.4 sq m

For identification only - Not to scale



Floor plan produced in accordance with RICS Property Measurement 2nd Edition, Incorporating International Property Measurement Standards (IPMS2 Residential). © richicom 2025. Produced for Barnard Marcus. REF: 1482100




barnfields



020 8363 3394



info@barnfields.com



1a Windmill Hill, Enfield, Middlesex, EN2 6SE



[barnfields.co.uk](https://www.barnfields.co.uk)