

FLETCHERS

ESTATE AGENTS



Goldhawk Road, W6

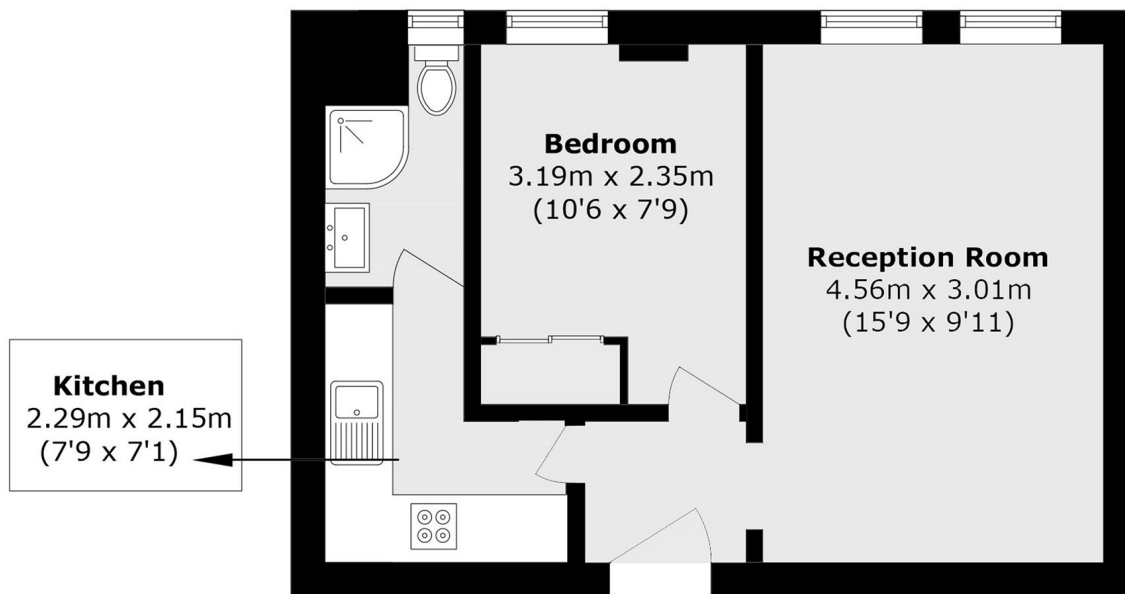
£370,000

An excellently renovated, one bedroom flat situated within a highly sought after Art Deco block on the borders of Chiswick and Hammersmith. Arranged laterally, this wonderful flat benefits from a double bedrooms with built in storage, an airy and bright reception room, a separate, modernised kitchen with fitted appliances & marble counter-top and a family bathroom. There is wonderful parquet floor throughout the flat retaining the charm of the 1930s and a neutral decor.

The development benefits from a porter and has the heating & hot water included within the service charge. The block has use of three lifts in the building with this property being offered to the market with a long lease.

Stamford Court sits on the borders of Hammersmith and Chiswick with Ravenscourt Park, the River Thames and Chiswick High Road close by. There is easy access to central London via the A4, and via the M4 for Heathrow Airport. Stamford Brook Underground station (District line) is on the opposite side of the road.

- Exceptional Condition • Double Bedroom • Long Lease • Lift Access • 1930s Art Deco Building • Separate Kitchen/Reception •



Total area (approx.): 31.6 sq. m (340.1sq. ft)

Fletchers Brook Green Sales
144 Shepherds Bush Road, Hammersmith, London, W6 7PB
020 7603 1415
brookgreensales@fletcherestates.com

Energy Rating: . We aim to make our particulars both accurate and reliable. However they are not guaranteed; nor do they form part of an offer or contract. If you require clarification on any points then please contact us, especially if you're traveling some distance to view. Please note that appliances and heating systems have not been tested and therefore no warranties can be given as to their good working order.