



Kingswood Avenue, NW6



1



1033.00
sq ft

NEW TO THE MARKET is this bright and spacious two bedroom apartment, spanning 1033 sq ft of accommodation in this highly sought-after area. This stunning Victorian apartment provides an open plan reception with a modern kitchen with a range of appliances, two good sized bedrooms and one bathroom. Accommodation includes a stylish, modern white kitchen/diner, separate reception room with outstanding views onto the park, modern bathroom and additional WC and two double bedrooms. Other benefits worthy of note are the large sash windows, high ceilings, and the extra storage available.

Kingswood Avenue is one of the most sought-after roads in Queen's Park and just moments away from the bespoke cafes, restaurants, gyms and boutique shops on both Salusbury Road and Lonsdale Road. Excellent transport links in and out of Central London with Queen's Park (Bakerloo) and Brondesbury Park (Overground) Stations. The open spaces of Queen's Park and Tiverton Green are both short walks away. Queens Park Bakerloo Line/Overground Station (Zone 2) is close by along with numerous bus links offering easy access to central London. There are a diverse selection of boutique cafes, restaurants, gym and yoga studios, good schools and nurseries available. Perfect for London living!

- Outstanding apartment opposite Queen's Park
- Large reception room with sash windows
- Modern fitted white kitchen
- Two bedrooms, one bathroom & a WC
- Good transport links into London (Overground & Bakerloo)
- Early viewing is highly recommended

£2,575 Per Month

CAMERONS STIFF & Co.

www.cameronsstiff.co.uk



CAMERONS STIFF & Co.

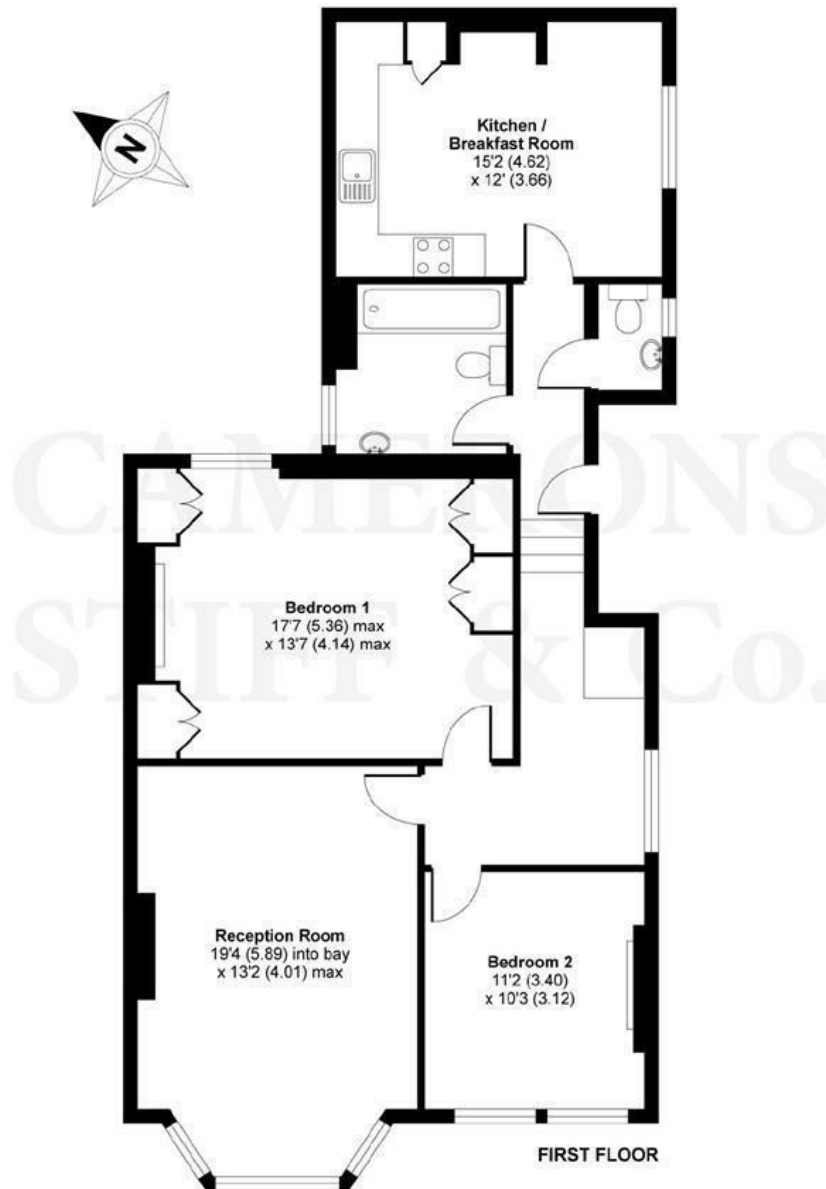
www.cameronsstiff.co.uk



Energy Efficiency Rating		
	Current	Potential
Very energy efficient - lower running costs		
(92 plus) A		
(81-91) B		
(69-80) C		
(55-68) D	65	79
(39-54) E		
(21-38) F		
(1-20) G		
Not energy efficient - higher running costs		
England & Wales	EU Directive 2002/91/EC	

Kingswood Avenue, London, NW6

APPROX. GROSS INTERNAL FLOOR AREA 1033 SQ FT 95.9 SQ METRES



Whilst every attempt has been made to ensure the accuracy of the floor plan contained here, measurements of doors, windows and rooms are approximate and no responsibility is taken for any error, omission or misstatement. These plans are for representation purposes only as defined by RICS Code of Measuring Practice and should be used as such by any prospective purchaser. Specifically no guarantee is given on the total square footage of the property if quoted on this plan. Any figure given is for initial guidance only and should not be relied on as a basis of valuation.

Copyright nichecom.co.uk 2019 Produced for Camerons Stiff & Co REF : 508731

You may download, store and use the material for your own personal use and research. You may not republish, retransmit, redistribute or otherwise make the material available to any party or make the same available on any website, online service or bulletin board of your own or of any other party or make the same available in hard copy or in any other media without the website owner's express prior written consent. The website owner's copyright must remain on all reproductions of material taken from this website.