

# SNELLERS

ESTATE AGENTS



## Lower Square, TW7

£549,950

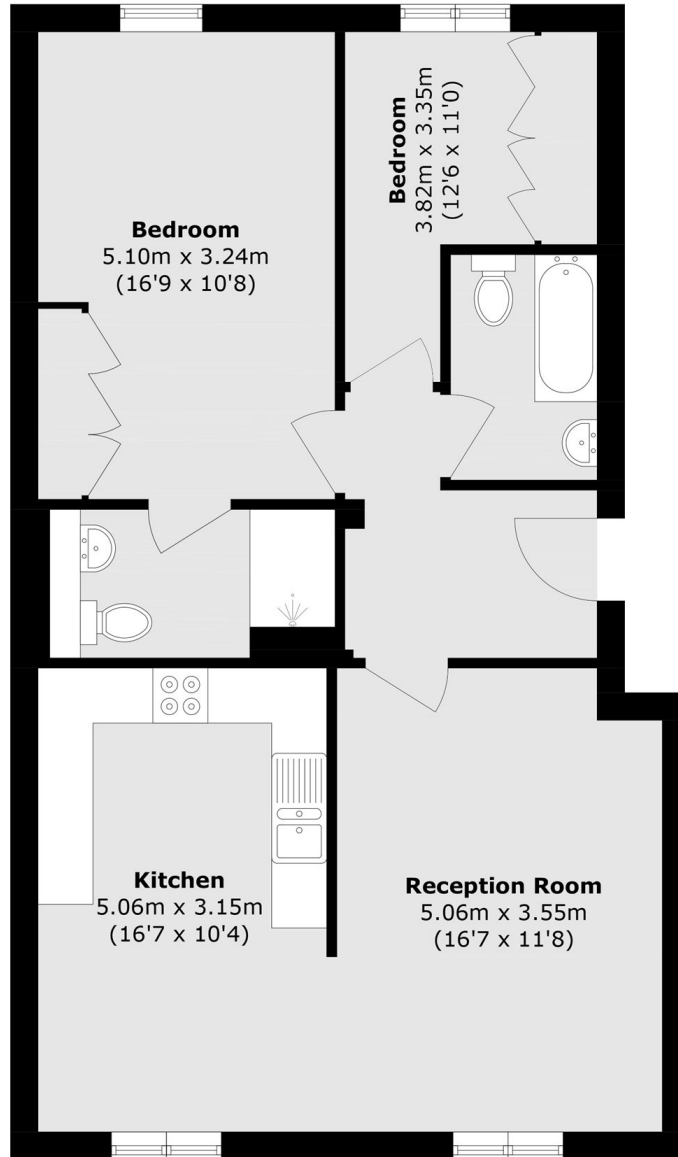
This spacious and well-presented two bedroom, two bathroom apartment directly facing the river offers bright and well-balanced accommodation throughout. The property features a generous reception room with ample space for both relaxing and dining, alongside a well-appointed kitchen with excellent storage and worktop space, creating a practical and comfortable home ideal for first-time buyers, downsizers or investors alike.

Situated within Osprey House, the property is conveniently located close to local shops, cafés and transport links, with Isleworth station within easy reach providing direct services into London Waterloo. Nearby Richmond, St Margarets and Twickenham offer a wider range of amenities, restaurants and green open spaces.

- Two Double Bedrooms • Two Bathrooms • Bright & Airy •
- Riverside Location • Fully Integrated Kitchen • Modern Living •
- Share of freehold (with 950+ years on lease) • Two private parking spaces •

# SNELLERS

ESTATE AGENTS



Total area (approx.): 76.3 sq. m (821.2 sq. ft)

Snellers St. Margarets Sales  
36 Crown Road  
St Margarets  
TW1 3EH  
020 8892 8008  
stmargaretssales@snellers.co.uk

Energy Rating: C We aim to make our particulars both accurate and reliable. However they are not guaranteed; nor do they form part of an offer or contract. If you require clarification on any points then please contact us, especially if you're traveling some distance to view. Please note that appliances and heating systems have not been tested and therefore no warranties can be given as to their good working order