

# SNELLERS

ESTATE AGENTS

---



**Queens Road, KT2**

**£1,900 PCM**

Luxurious top floor two bedroom flat adjacent to Richmond Park, boasting breathtaking views of Kingston Upon Thames. This elegant residence features two spacious double bedrooms and offers a serene escape with proximity to nature and the picturesque landscape.



Dean Court is on Queens Road just off the slopes of Kingston Hill. Ideally positioned for excellent local schools and Norbiton train station for the commute into London, Waterloo.

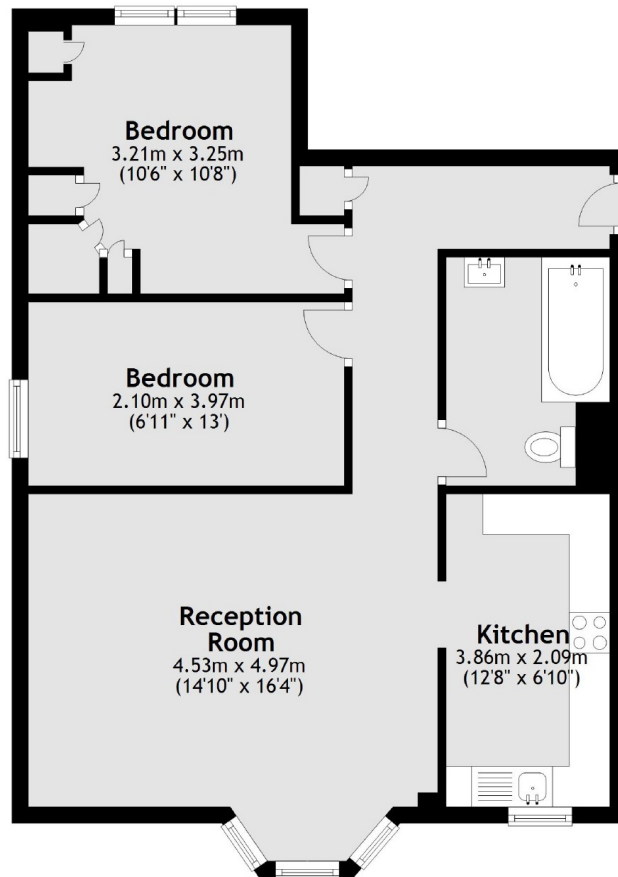
- Two Double Bedrooms • Modern Kitchen • Bright Reception Room •
- Private Garage • Central Location • Moments from Richmond Park •



# SNELLERS

ESTATE AGENTS

---



Total area: approx. 64.0 sq. metres (689.4 sq. feet)

Snellers Kingston Lettings  
17-21 Richmond Road  
Kingston  
KT2 5BW  
020 8546 0505  
[kingstonlettings@snellers.co.uk](mailto:kingstonlettings@snellers.co.uk)

Energy Rating: D We aim to make our particulars both accurate and reliable. However they are not guaranteed; nor do they form part of an offer or contract. If you require clarification on any points then please contact us, especially if you're traveling some distance to view. Please note that appliances and heating systems have not been tested and therefore no warranties can be given as to their good working order