

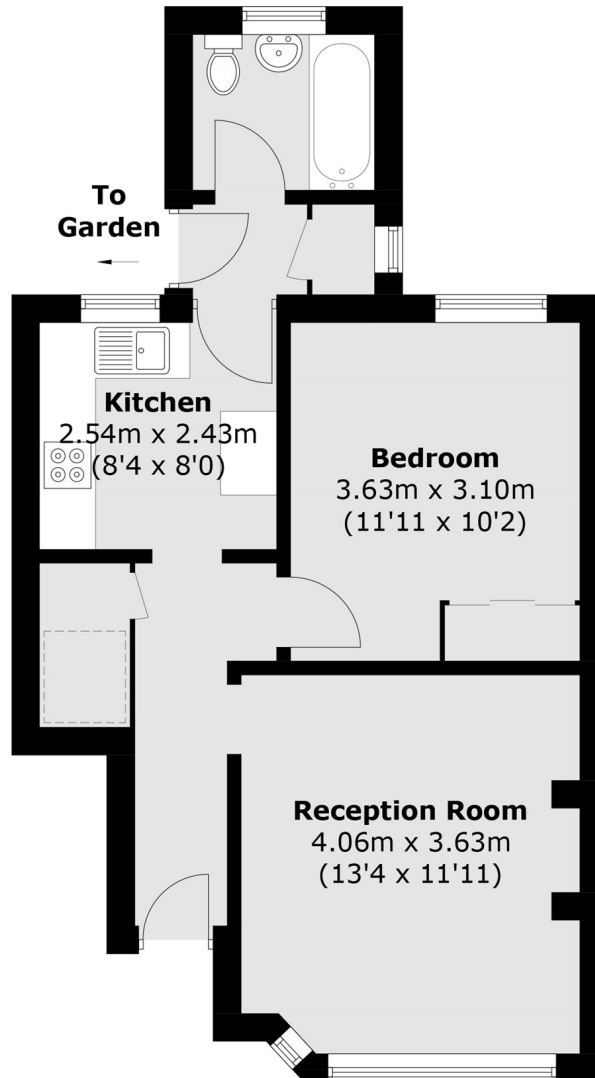


## Connell Crescent, W5

£325,000

A one bedroom ground floor maisonette with a private garden. The property has a long lease, offers the potential to extend subject to all the usual consents and comes with no onward chain.

Connell Crescent is ideally located within 500 metres of both Park Royal and Hanger Lane stations both of which provide excellent access into town.



## Ground Floor

Total area (approx.): 46.3 sq. m (498.4 sq. ft)

Robertson Smith & Kempson Northfields Sales  
116 Northfield Avenue,  
London, W13 9RT  
020 8566 2340  
[northfieldssales@robertsonsmithandkempson.co.uk](mailto:northfieldssales@robertsonsmithandkempson.co.uk)

Energy Rating: C. We aim to make our particulars both accurate and reliable. However they are not guaranteed; nor do they form part of an offer or contract. If you require clarification on any points then please contact us, especially if you're traveling some distance to view. Please note that appliances and heating systems have not been tested and therefore no warranties can be given as to their good working order.