

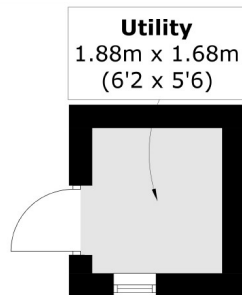


Windsor Road, W5

£462 pw (£2,000 pcm)

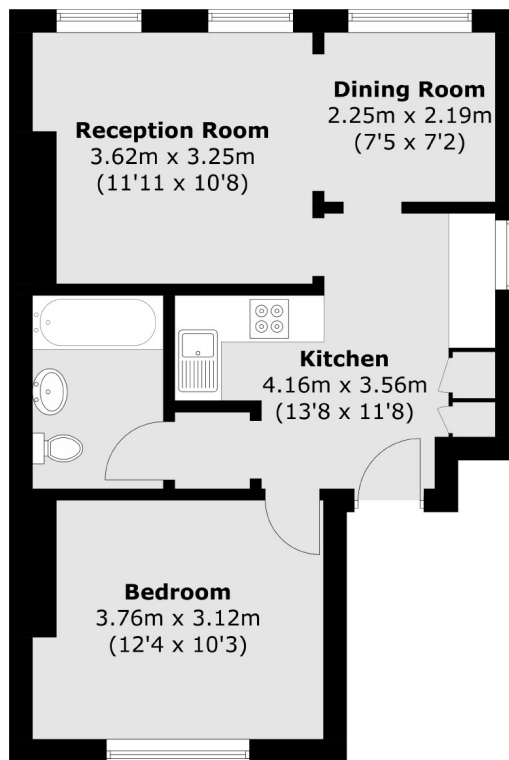
A beautiful first floor one bedroom flat in a stunning Victorian conversion. The property opens onto a contemporary kitchen, modern family bathroom, a large double bedroom and spacious reception and dining room.

Located on a popular tree-lined street with easy access to Ealing Broadway station (Central, District, Elizabeth and overground lines). Ealing Common and Walpole Park are also close by.



Utility
1.88m x 1.68m
(6'2 x 5'6)

First Floor Half Landing



First Floor

Total area (approx.): 47.1 sq. m (507.0 sq. ft)
Utility: 3.3 sq. m (35.5 sq. ft)

Robertson Smith & Kempson Ealing Lettings
1 The Broadway,
London, W5 2NT
020 8840 7885
ealinglettings@robertsonsmithandkempson.co.uk

Energy Rating: . We aim to make our particulars both accurate and reliable. However they are not guaranteed; nor do they form part of an offer or contract. If you require clarification on any points then please contact us, especially if you're traveling some distance to view. Please note that appliances and heating systems have not been tested and therefore no warranties can be given as to their good working order.