



Dawbeney Drive, Amesbury Salisbury SP4 7TR

welcome to

Dawbeney Drive, Amesbury Salisbury

A well presented three bedroom link detached property in the heart of Amesbury, A beautiful wrap around garden, driveway and garage

Book to View

Front

Driveway and single garage

Entrance Hall

Carpet, radiator

Downstairs Cloakroom

Carpet, side aspect double glazed window, radiator, w/c, sink

Lounge

Carpet, radiator, french doors leading to the garden

Kitchen

Vinyl flooring, gas hob, extractor hood, front aspect double glazed window, built-in-oven, space for washing machine, fridge freezer

Landing

Carpet, hatch to attic

Bedroom One

Carpet, radiator, rear aspect double glazed window

Bedroom Two

Dual aspect double glazed window, carpet, radiator, hatch to attic

Bedroom Three

Carpet, radiator, over stair storage, two front aspect double glazed windows

Family Bathroom

Vinyl flooring, w/c, sink, bath/shower, rear aspect double glazed window

Rear Garden

Wrap around garden laid to lawn, with patio area, side access, shed





view this property online fox-and-sons.co.uk/Property/AME106024



welcome to

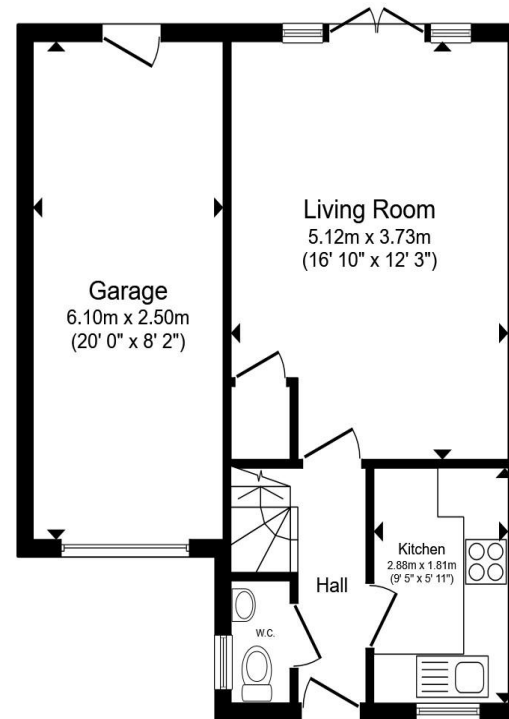
Dawbeney Drive, Amesbury Salisbury

- Three Bedroom Link Detached Family Home
- Beautiful Wrap-A- Round Garden
- Driveway and Garage
- Access To Schools, Amenities and Shops
- Access to A303

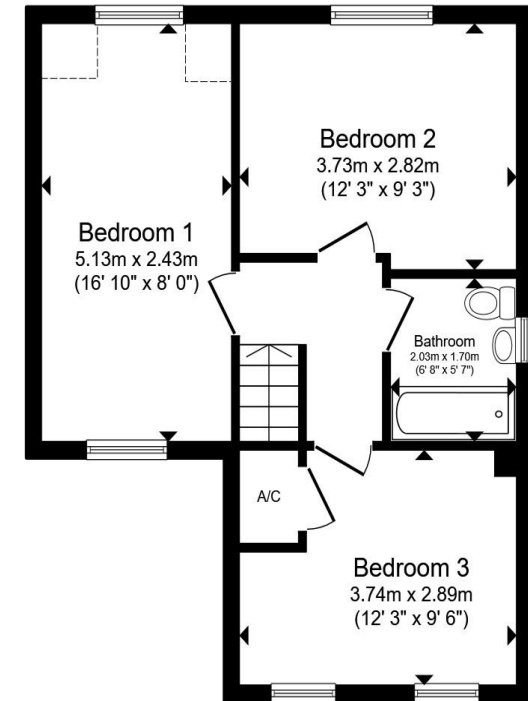
Tenure: Freehold EPC Rating: Awaiting

Council Tax Band: D

£345,000



Ground Floor



First Floor

Total floor area 90.3 m² (972 sq.ft.) approx

This floor plan is for illustrative purposes only. It is not drawn to scale. Any measurements, floor areas (including any total floor area), openings and orientation are approximate. No details are guaranteed, they cannot be relied upon for any purpose and they do not form part of any agreement. No liability is taken for any error, omission or misstatement. A party must rely upon its own inspection(s). Powered by www.propertybox.io



view this property online fox-and-sons.co.uk/Property/AME106024



Property Ref:
AME106024 - 0004

1. MONEY LAUNDERING REGULATIONS Intending purchasers will be asked to produce identification documentation at a later stage and we would ask for your co-operation in order that there is no delay in agreeing the sale. 2. These particulars do not constitute part or all of an offer or contract. 3. The measurements indicated are supplied for guidance only and as such must be considered incorrect. Potential buyers are advised to recheck measurements before committing to any expense. 4. We have not tested any apparatus, equipment, fixtures or services and it is in the buyers interest to check the working condition of any appliances. 5. Where an EPC, or a Home Report (Scotland only) is held for this property, it is available for inspection at the branch by appointment. If you require a printed version of a Home Report, you will need to pay a reasonable production charge reflecting printing and other costs. 6. We are not able to offer an opinion either written or verbal on the content of these reports and this must be obtained from your legal representative. 7. Whilst we take care in preparing these reports, a buyer should ensure that his/her legal representative confirms as soon as possible all matters relating to title including the extent and boundaries of the property and other important matters before exchange of contracts.



01980 624155



Amesbury@fox-and-sons.co.uk



49 Salisbury Street, AMESBURY, Wiltshire, SP4 7AW



fox-and-sons.co.uk