



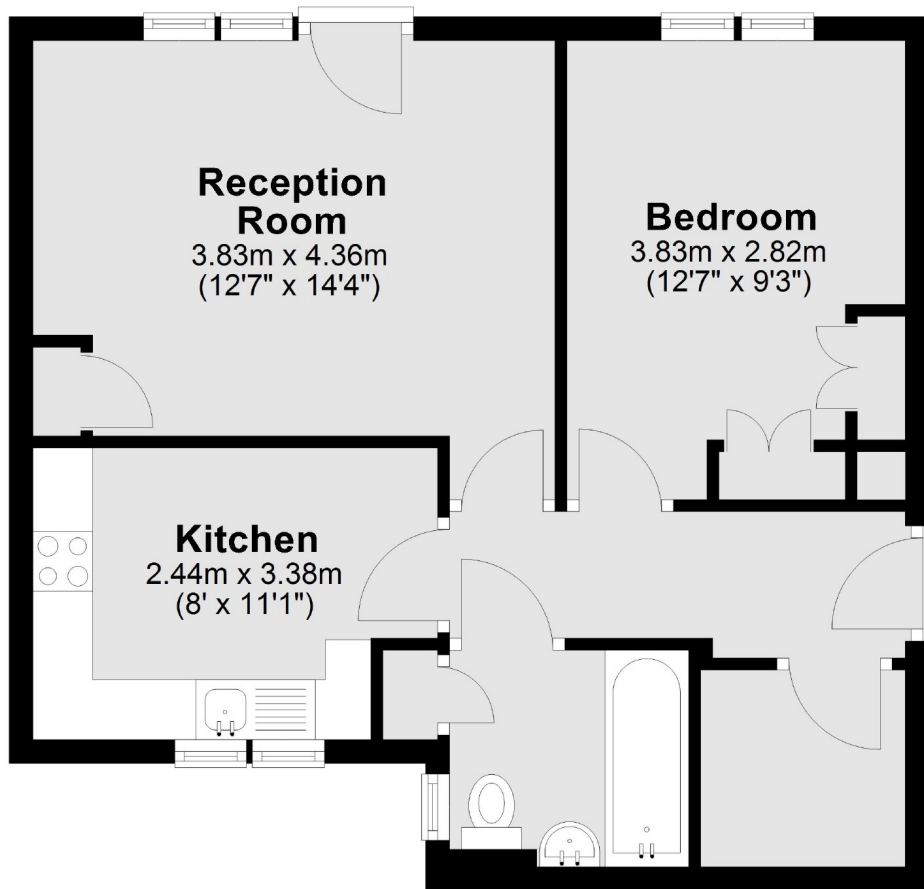
Buckingham Close, W5

£1,850 pw (£1,850 pcm)

A large one bedroom, one bathroom apartment close to Ealing Broadway. This ground floor apartment offers both comfort and convenience, complete with a private patio for outdoor relaxation.

The property is located on Buckingham Close in Ealing, close to Ealing Broadway for transport links and amenities.

- One Bedroom • Ground Floor Flat • Private Patio •



Total area: approx. 46.6 sq. metres (501.2 sq. feet)

Robertson Smith & Kempson Ealing Lettings
1 The Broadway,
London, W5 2NT
020 8840 7885
ealinglettings@robertsonsmithandkempson.co.uk

Energy Rating: . We aim to make our particulars both accurate and reliable. However they are not guaranteed; nor do they form part of an offer or contract. If you require clarification on any points then please contact us, especially if you're traveling some distance to view. Please note that appliances and heating systems have not been tested and therefore no warranties can be given as to their good working order.