



Sharman  
Quinney  
www.sharmanquinney.co.uk  
01535 5133 27607  
for sale

Parkway Close, Nassington Peterborough  
**£300,000 Freehold**

**Sharman  
Quinney**

# Key Features



- NO ONWARD CHAIN
- Conservatory
- Dressing area for master bedroom
- Large storage area within eves
- Desirable location

This well presented two-bedroom dormer bungalow is located in a quiet cul de sac, offering peaceful living while still being close to local amenities. The property provides generous accommodation throughout and benefits from both front and rear gardens, a garage, and driveway parking. The village itself offers a range of convenient facilities including a shop, Post Office, butchers, pub and tea rooms, adding to the appeal of the location.

The lounge is a spacious and welcoming room, featuring a large front facing window that floods the space with natural light, along with a charming fireplace. A separate dining room offers additional space for entertaining and includes a useful storage cupboard. The kitchen sits to the rear of the property and leads through to the



conservatory, creating a bright and versatile space. The family bathroom completes the ground floor layout.

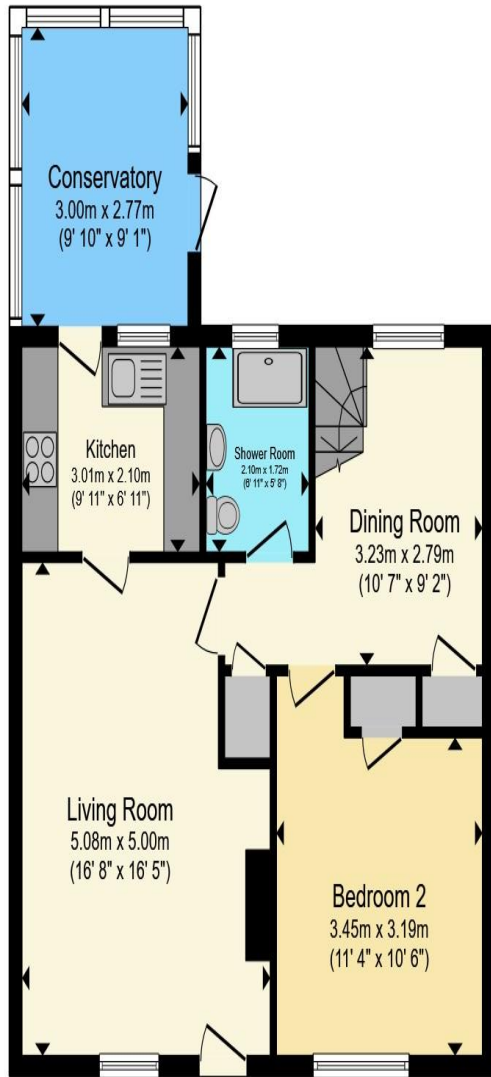
The bungalow has been thoughtfully extended to provide a first-floor bedroom overlooking the garden. This room includes a built-in cupboard and is complemented by a handy dressing area just outside, making excellent use of the additional space.

Externally, the property continues to impress. The garage benefits from a roof replaced only four years ago, and the driveway provides further off-road parking. The front garden is laid to lawn with established shrubs, while the rear garden offers a patio area leading onto a lawn bordered by mature planting. A convenient rear gate opens directly onto countryside walks, ideal for those who enjoy time outdoors.

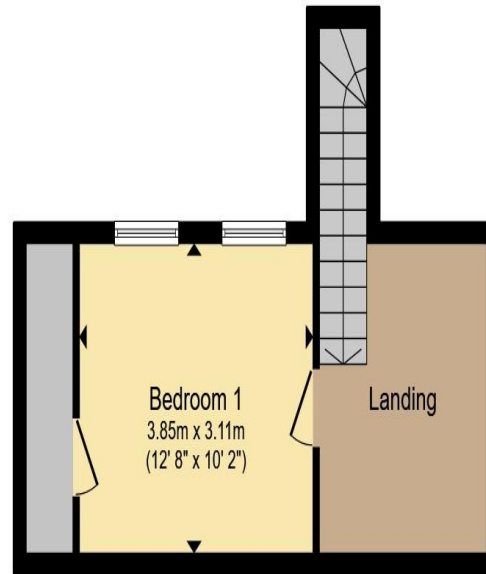
This charming dormer bungalow combines a peaceful setting with spacious accommodation, attractive gardens, and access to excellent village amenities, making it an ideal home for a range of buyers.

AGENTS NOTE – 'The sale of this property is subject to a grant of representation. Please seek an update from the branch with regards to the potential timeframes involved.'





**Ground Floor**



**First Floor**

Total floor area 89.0 m<sup>2</sup> (958 sq.ft.) approx

This floor plan is for illustrative purposes only. It is not drawn to scale. Any measurements, floor areas (including any total floor area), openings and orientation are approximate. No details are guaranteed, they cannot be relied upon for any purpose and they do not form part of any agreement. No liability is taken for any error, omission or misstatement. A party must rely upon its own inspection(s). Powered by [www.propertybox.io](http://www.propertybox.io)

**Sharman  
Quinney**

To view this property call Sharman Quinney on:  
**01832 274567**

# Selling your property?

Contact us to arrange a **FREE** home valuation.

 01832 274567

 The Old Town Hall Market Place, Oundle, Peterborough, Cambridgeshire, PE8 4BQ

 [oundle@sharmanquinney.co.uk](mailto:oundle@sharmanquinney.co.uk)

 [www.sharmanquinney.co.uk](http://www.sharmanquinney.co.uk)



 SCAN ME



Sharman Quinney Holdings Limited is registered in England and Wales under company number 4174227, Registered Office is Cumbria House, 16-20 Hockliffe Street, Leighton Buzzard, Bedfordshire, LU7 1GN. VAT Registration Number is 500 2481 05.

1: These particulars do not constitute part or all of an offer or contract. 2: The measurements indicated are supplied for guidance only and as such must be considered incorrect. 3: Potential buyers are advised to recheck the measurements before committing to any expense. 4: Sharman Quinney has not tested any apparatus, equipment, fixtures, fittings or services and it is the buyers interests to check the working condition of any appliances. 5: Sharman Quinney has not sought to verify the legal title of the property and buyers must obtain verification from their legal representative. 6: Intending purchasers will be asked to produce identification documentation at a later stage and we would ask your co-operation in order that there will be no delay in agreeing the sale. Ref: OUN202875 - 0002

