



Harris Avenue, £250,000

- Kitchen / Diner
- Off Road Parking
- Rear Garden
- Excellent Bus Routes
- Close proximity to superstore and amenities
- EPC Rating: Awaited



 3  1  1



About the property

Perfect family home waiting for it's new owners to move straight in! Off Road parking, large rear garden and excellent living space. Call today to book your viewing by appointment only!!





Accommodation

Hallway

Lounge

14' 8" max x 10' 10" max (4.47m max x 3.30m max)

Dining Room

10' 3" max x 10' max (3.12m max x 3.05m max)

Kitchen

11' max x 10' 2" max (3.35m max x 3.10m max)

Storage

Utility Room

8' 6" x 6' (2.59m x 1.83m)

Bedroom One

12' 1" x 10' 10" (3.68m x 3.30m)

Bedroom Two

14' 8" x 8' 7" (4.47m x 2.62m)

Bedroom Three

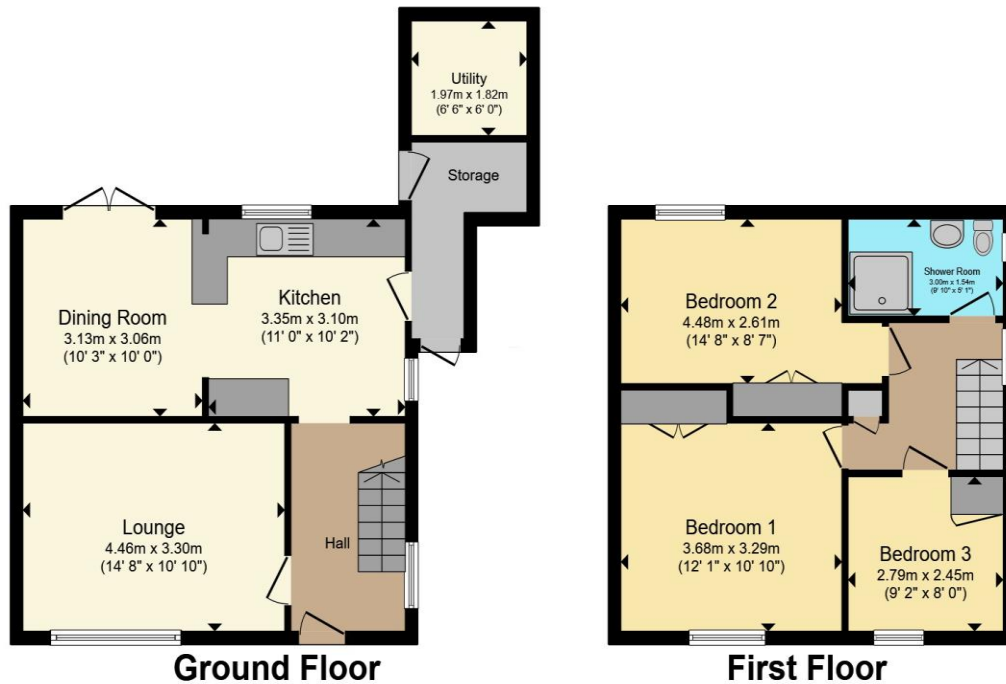
9' 2" x 8' (2.79m x 2.44m)

Shower Room

02920 792888

rumney@peteralan.co.uk

Floorplan



Total floor area 93.0 m² (1,001 sq.ft.) approx

This floor plan is for illustrative purposes only. It is not drawn to scale. Any measurements, floor areas (including any total floor area), openings and orientation are approximate. No details are guaranteed, they cannot be relied upon for any purpose and they do not form part of any agreement. No liability is taken for any error, omission or misstatement. A party must rely upon its own inspection(s). Powered by www.propertybox.io

Important Information

Note while we endeavour to make our sales details accurate and reliable, if there is any point which is of particular interest to you, please contact the office and we will be pleased to confirm the position for you. We have not personally tested any apparatus, equipment, fixtures, fittings or services and cannot verify they are in working order or fit for their purposes. Nothing in these particulars is intended to indicate that carpets or curtains, furnishings or fittings, electrical goods (whether wired or not). Gas fires or light fittings or any other fixtures not expressly included form part of the property offered for sale. This computer generated Floorplan, if applicable, is intended as a general guide to the layout and design of the property. It is not to scale and should not be relied upon for dimensions. Tenure: We cannot confirm the tenure of the property as we have not had access to the legal documents. The buyer is advised to obtain verification from their solicitor or surveyor.

Peter Alan Limited is registered in England and Wales under company number 2073153, Registered Office is Cumbria House, 16-20 Hockliffe Street, Leighton Buzzard, Bedfordshire, LU7 1GN. VAT Registration Number is 500 2481 05. For activities relating to regulated mortgages and non-investment insurance contracts, Peter Alan Limited is an appointed representative of Connells Limited which is authorised and regulated by the Financial Conduct Authority. Connells Limited's Financial Services Register number is 302221. Most buy-to-let