



Burrowmoor Road, March  
**£325,000 Freehold**

**Sharman  
Quinney**

# Key Features



- No Onward Chain
- Generously Sized Family Home
- Character Features Throughout
- Ample Off-Road Parking Plus Garage
- Expansive Rear Garden

## Ground Floor

### Entrance Hall

A grand space with entry through the original stained glass front door with glazed surround. Feature corniced archway. Parquet flooring throughout currently underneath carpet. Access to Lounge and Dining Room, Understairs Storage,

Kitchen/Diner and door to side with access into the rear garden. Stairs to first floor

### Lounge

Feature fireplace. Large bay window to front, letting in plenty of natural light. Open to dining area or further lounge area via archway.

### Dining Room

Feature fireplace. Dual aspect windows to side and



rear. Access door to hallway.

#### Kitchen/Diner

A large open space with archway in the middle. Tiled flooring throughout. Window to side in dining area, dual aspect windows to both sides in kitchen area. A range of base and wall units with tiled splashback, porcelain sink, range cooker and overhead extractor fan. Access into Utility Room

#### Utility Room

Door to rear leading into garden. Tiled flooring from kitchen/diner continued. A range of wall units with worktop space under and space for washing machine, tumble dryer and dishwasher. Access into W/C.

#### W/C

Tiled flooring and walls. Low rise toilet and wall mounted sink with mixer tap.

#### First Floor

##### Bedroom One

An impressive size, the full width of the front of the house. Two large windows to the front. Fitted carpet and a wall of built in wardrobes.

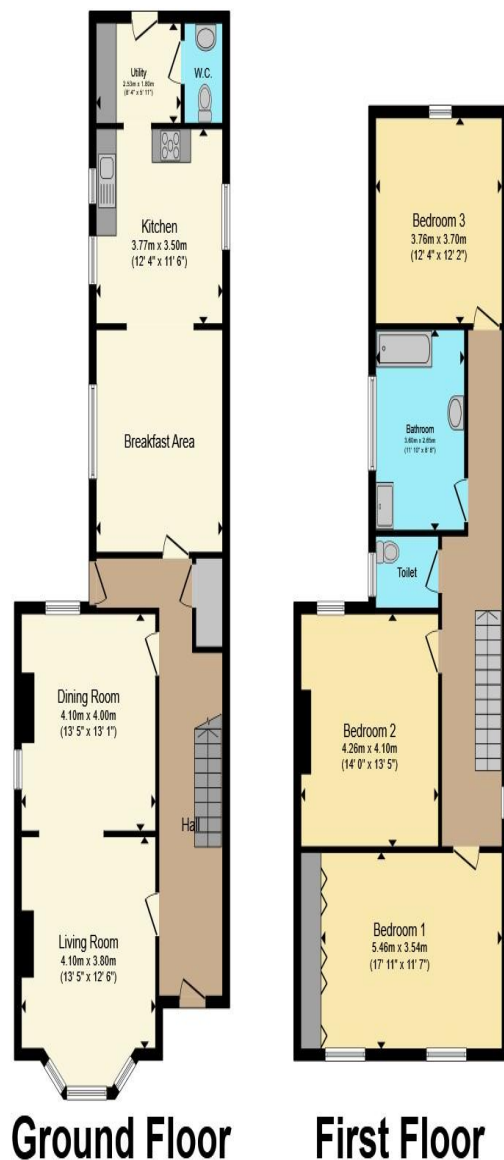
##### Bedroom Two

Feature fireplace. Window to rear. Fitted carpet.

##### Bedroom Three

Window to rear. Fitted carpet.





Total floor area 166.7 m<sup>2</sup> (1,795 sq.ft.) approx

This floor plan is for illustrative purposes only. It is not drawn to scale. Any measurements, floor areas (including any total floor area), openings and orientation are approximate. No details are guaranteed, they cannot be relied upon for any purpose and they do not form part of any agreement. No liability is taken for any error, omission or misstatement. A party must rely upon its own inspection(s). Powered by [www.propertybox.io](http://www.propertybox.io)

**Sharman  
Quinney**

### Bathroom

Window to side. Tiled flooring and walls. Panelled bath, large corner shower unit with built in recessed shelves, floating sink vanity unit. Heated towel rail.

### W/C

Window to side. Low rise toilet.

### Outside

The front of the property offers ample off-road parking via the gravel and block paved driveway across the whole front of the property, making it low maintenance. There is a single garage with an electric roller door. A paved pathway leads round the side of the house allowing access to the rear garden.

The rear garden is fully enclosed and mostly laid to lawn with various trees, shrubs and a pond. Large patio area directly to the rear and side of the house and stone pathway leading to the rear of the garden. It is a very generous size and offers plenty of potential for landscaping and gardening.

### Agents Notes

Under the terms of the Estate Agency Act 1979 (Section 21) please note that the Vendor of this property is a close associate of Sharman Quinney Holdings Ltd.

To view this property call Sharman Quinney on:  
**01354 661166**

# Selling your property?

Contact us to arrange a **FREE** home valuation.

 01354 661166

 8 Broad Street, MARCH, Cambridgeshire, PE15 8TG

 [march@sharmanquinney.co.uk](mailto:march@sharmanquinney.co.uk)

 [www.sharmanquinney.co.uk](http://www.sharmanquinney.co.uk)



 SCAN ME



Sharman Quinney Holdings Limited is registered in England and Wales under company number 4174227, Registered Office is Cumbria House, 16-20 Hockliffe Street, Leighton Buzzard, Bedfordshire, LU7 1GN. VAT Registration Number is 500 2481 05.

1: These particulars do not constitute part or all of an offer or contract. 2: The measurements indicated are supplied for guidance only and as such must be considered incorrect. 3: Potential buyers are advised to recheck the measurements before committing to any expense. 4: Sharman Quinney has not tested any apparatus, equipment, fixtures, fittings or services and it is the buyers interests to check the working condition of any appliances. 5: Sharman Quinney has not sought to verify the legal title of the property and buyers must obtain verification from their legal representative. 6: Intending purchasers will be asked to produce identification documentation at a later stage and we would ask your co-operation in order that there will be no delay in agreeing the sale. Ref: MRC207246 - 0001

