

ALLDAY
& MILLER



Morris Avenue, Uxbridge, UB8 1GP
£2,750 Per Month

4 2 1 C



Morris Avenue, Uxbridge, UB8 1GP

£2,750 Per Month

- Four Bedroom Detached Family Home
- Two Bathrooms
- Driveway Leading to Multiple Parking
- Nearby to Highly Regarded Schools
- Stunning Open Plan Kitchen Diner
- Utility Room With Appliances
- Walking Distance to Uxbridge Town Centre
- Downstairs WC

Description

The ground floor comprises a spacious and welcoming living room, with direct access to the rear garden, creating a wonderful space for both relaxing and entertaining. The heart of the home is the impressive eat-in kitchen, offering ample worktop and storage space, together with room for a family dining table. A separate utility room provides additional practicality, while a convenient downstairs WC and a large storage cupboard, ideal for coats and shoes, complete the ground floor accommodation. Upstairs, the property offers four well-proportioned bedrooms, including a generous principal bedroom benefiting from its own en-suite shower room. The remaining bedrooms are served by a modern family bathroom. To the rear, the property enjoys a generous private garden featuring a raised patio area, perfect for outdoor dining and entertaining during the warmer months. A separate side section of the garden has previously been used as a productive vegetable patch, offering excellent potential for keen gardeners. Rear access leads to private parking for two vehicles.

Situation

Morris Avenue is situated on a sought after residential development built in 2010 and located conveniently between North Hillingdon and North Uxbridge. There are well regarded schools in close proximity and recreational facilities also nearby such as Hillingdon Golf Club, Court Park, The Common, St Andrews Park, Uxbridge Cricket Club and the Hillingdon sports and leisure complex. Uxbridge Town Centre with its array of shopping facilities, restaurants and bars and the Piccadilly/Metropolitan Line Station is approximately half a mile away along with the A40 giving access to London and the Home Counties.

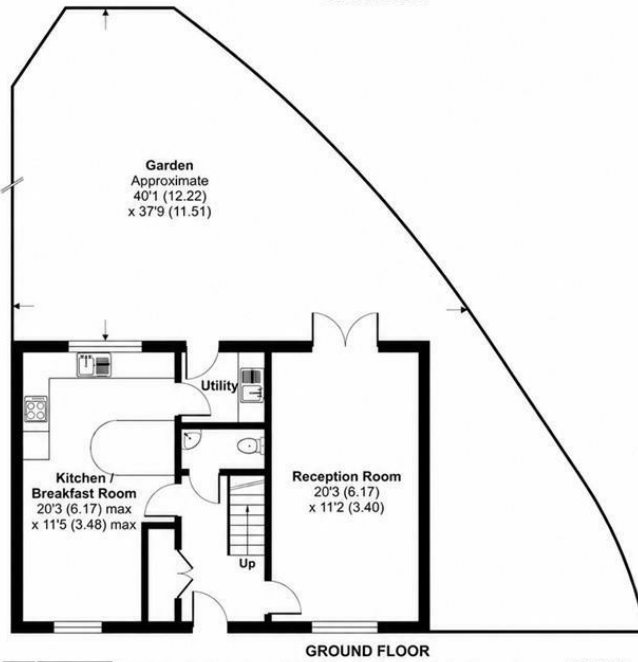


Floor Plans

Morris Avenue, Uxbridge, UB8

Approximate Area = 1220 sq ft / 113.3 sq m

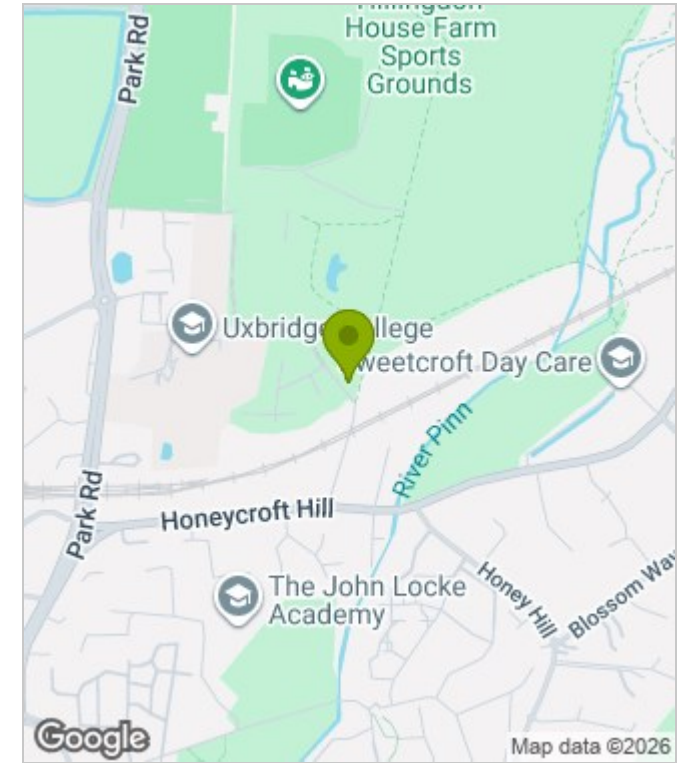
For identification only - Not to scale



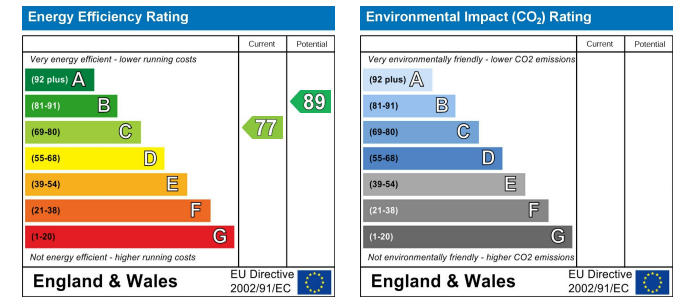
Floor plan produced in accordance with RICS Property Measurement Standards incorporating International Property Measurement Standards (IPMS2 Residential). © nichecom 2023. Produced for Allday & Miller. REF: 1058447



Area Map



Energy Performance Graph



These particulars, whilst believed to be accurate are set out as a general outline only for guidance and do not constitute any part of an offer or contract. Intending purchasers should not rely on them as statements of representation of fact, but must satisfy themselves by inspection or otherwise as to their accuracy. No person in this firm's employment has the authority to make or give any representation or warranty in respect of the property.

www.alldayandmiller.co.uk

192 High Street, Uxbridge, Middlesex, UB8 1LB

T: 01895 641 000 | E: sales@alldayandmiller.co.uk
T: 01895 379 549 | E: lettings@alldayandmiller.co.uk