



Hampton Road, TW2

£399,950

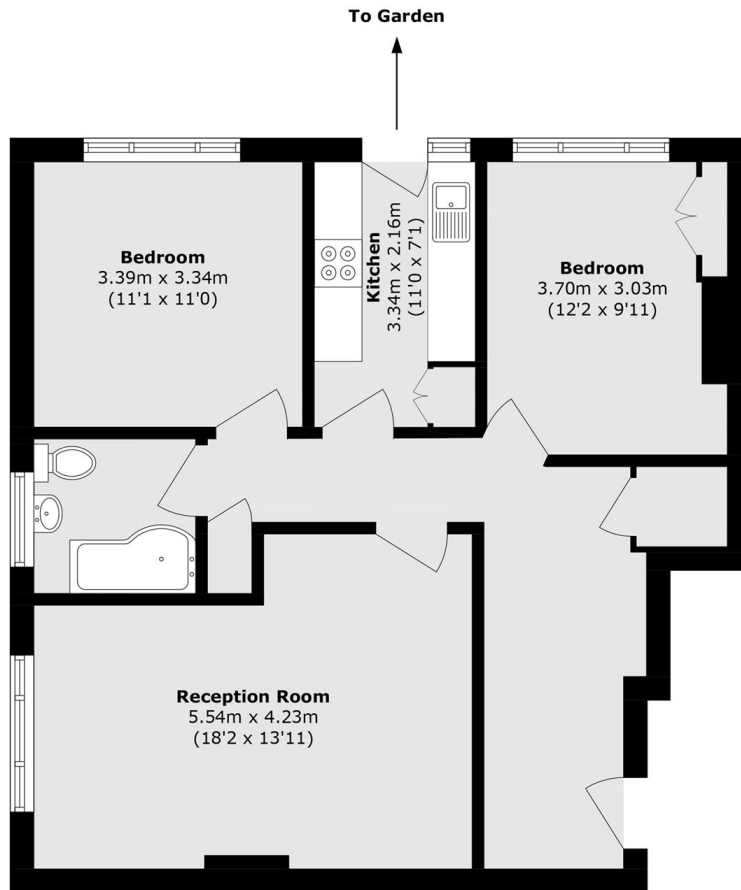
A very well presented ground floor maisonette, located in this well-kept development, close to Twickenham Green and Strawberry Hill Station. The property has a good sized living room with space for dining, two double bedrooms with built-in wardrobes and a modern kitchen leading onto the pristine communal gardens. Further benefits include unallocated residents parking.

Kenilworth Court is well located for both Twickenham and Strawberry Hill Stations and is within easy access to the A316 and M3. Twickenham Green is just 0.3 miles away, which is surrounded by plenty of local pubs, bars and restaurants. There are also excellent primary and secondary schools nearby, including St Catherines and Waldegrave School.

- Ground Floor • Beautifully Presented • Two Double Bedrooms •
- Close to Station • Communal Gardens • Unallocated Residents Parking •

SNELLERS

ESTATE AGENTS



Total area (approx.): 73.3 sq. m (789.0 sq. ft)

Snellers Twickenham Sales
64-66 Heath Road
Twickenham
TW1 4BX
020 8892 5555
twickenhamsales@snellers.co.uk

Energy Rating: D We aim to make our particulars both accurate and reliable. However they are not guaranteed; nor do they form part of an offer or contract. If you require clarification on any points then please contact us, especially if you're traveling some distance to view. Please note that appliances and heating systems have not been tested and therefore no warranties can be given as to their good working order