

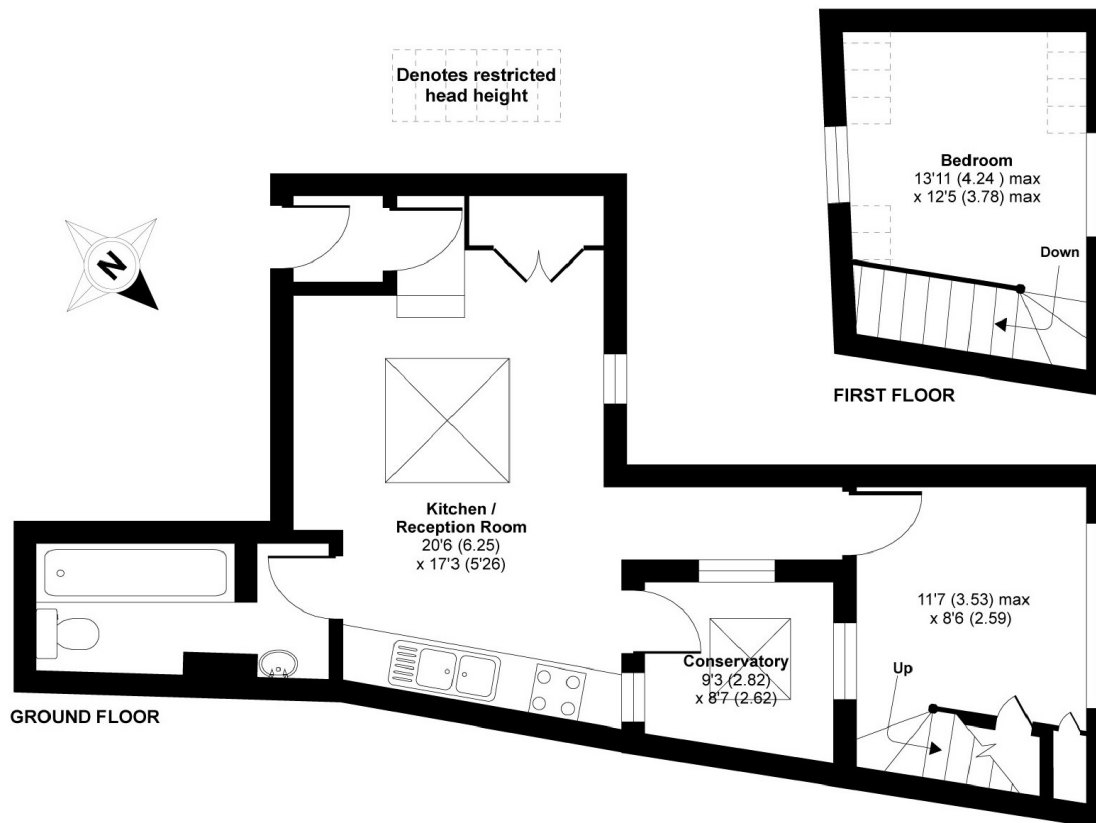


BALHAM HIGH ROAD, SW12

£2,400 PCM

- Ground floor
- Sky Lights
- Winter Garden
- Split Level
- Spacious throughout
- Close to Balham Station





APPROX. GROSS INTERNAL FLOOR AREA 529 SQ FT 49 SQ METRES (EXCLUDES RESTRICTED HEAD HEIGHT)

Balham High Road, London, SW12

Copyright nichecom.co.uk 2017 Produced for Jacksons the Independent Estate Agents REF : 228499

JACKSONS BALHAM

8-11 Balham Station Road,
London, SW12 9SG
Sales: 020 8675 6555
Lettings: 020 8675 6565

Energy Rating: C We aim to make our particulars both accurate and reliable. However they are not guaranteed; nor do they form part of an offer or contract. If you require clarification on any points then please contact us, especially if you're traveling some distance to view. Please note that appliances and heating systems have not been tested and therefore no warranties can be given as to their good working order.