



Scott Drive, Yaxley Peterborough
£275,000 Freehold

**Sharman
Quinney**

Key Features



- Modern Three Storey Town House
- Four Bedrooms + En-Suite Shower Room
- Kitchen/Diner + Living Room
- Downstairs Cloakroom + Family Bathroom
- Enclosed Rear Garden

Located in a modern development set back from the main road, benefits from having a children's enclosed play area to the front, close to local amenities, schools and in easy access to the A1, in brief the accommodation comprise of Entrance Hall with stairs to the first floor landing, doors to the Living Room with French doors opening out to the rear garden, kitchen/Diner which is fitted with a range of base and eye level units, cupboards and drawers, worktop space with single drainer sink unit, space for a fridge/freezer, plumbing for a washing machine and dishwasher, built-in four ring gas hob, electric oven, wall mounted heating boiler, First Floor Landing has stairs to the second floor landing, built-in airing cupboard, doors to Bedrooms, 2,3,4 and to the Three Piece Family Bathroom which includes panelled bath, low level wc, pedestal wash hand basin, Second Floor



Landing has a door to the Spacious Bedroom 1 which includes a dressing area and a door to the Three Piece En- Suite Shower Room comprising of a walk-in shower cubicle with a overhead shower and a hand held shower attachment, low wc, pedestal wash hand basin, heated towel rail. Outside frontage is open plan with the allocated parking space, Rear Garden is enclosed laid mainly to lawn wooden decked patio seating area.

Entrance Hall:

Downstairs Cloakroom:

Living Room:

Kitchen/Diner:

First Floor Landing:

Bedroom 2:

Bedroom 3:

Bedroom 4:

Family Bathroom:

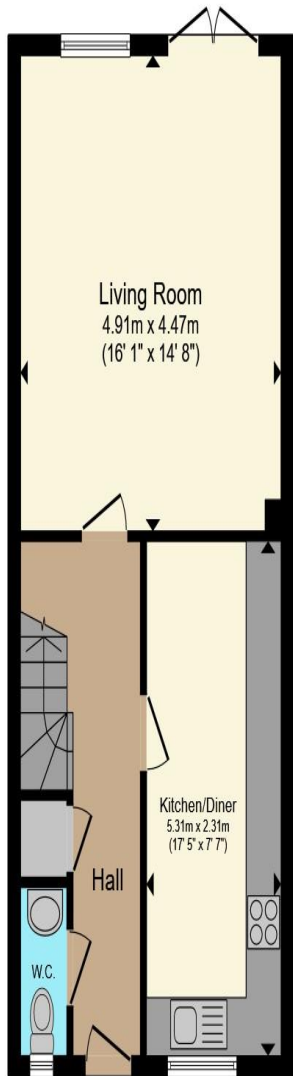
Second Floor Landing:

Bedroom 1:

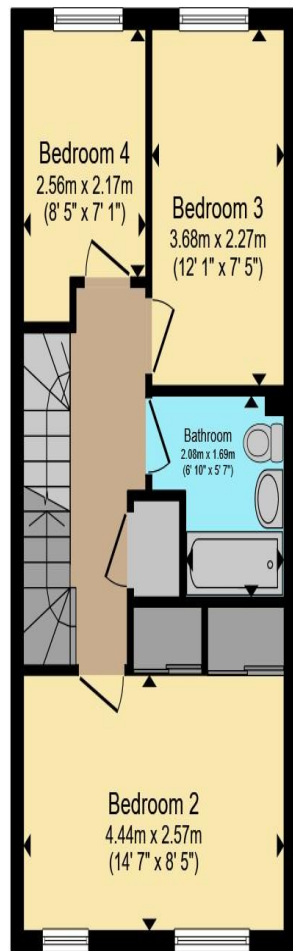
En-Suite Shower Room:

All measurements are listed on the floor plan.

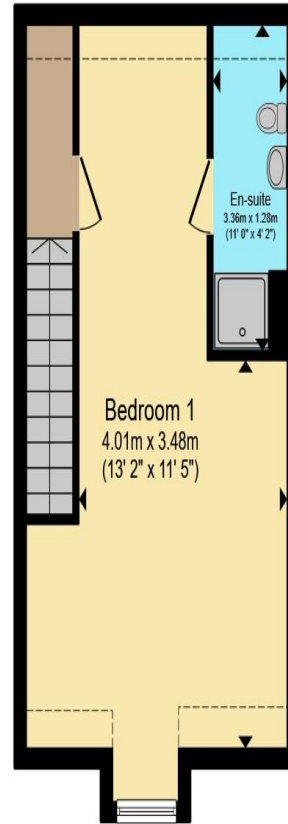




Ground Floor



First Floor



Second Floor

Total floor area 121.7 m² (1,310 sq.ft.) approx

This floor plan is for illustrative purposes only. It is not drawn to scale. Any measurements, floor areas (including any total floor area), openings and orientation are approximate. No details are guaranteed, they cannot be relied upon for any purpose and they do not form part of any agreement. No liability is taken for any error, omission or misstatement. A party must rely upon its own inspection(s). Powered by www.propertybox.io

**Sharman
Quinney**

To view this property call Sharman Quinney on:
01733 245400

Selling your property?

Contact us to arrange a **FREE** home valuation.

 01733 245400

 Unit 19 Maltings Square, Broadway Shopping Centre, Yaxley, Cambridgeshire, PE7 3EW

 yaxley@sharmanquinney.co.uk

 www.sharmanquinney.co.uk



 SCAN ME



Sharman Quinney Holdings Limited is registered in England and Wales under company number 4174227, Registered Office is Cumbria House, 16-20 Hockliffe Street, Leighton Buzzard, Bedfordshire, LU7 1GN. VAT Registration Number is 500 2481 05.

1: These particulars do not constitute part or all of an offer or contract. 2: The measurements indicated are supplied for guidance only and as such must be considered incorrect. 3: Potential buyers are advised to recheck the measurements before committing to any expense. 4: Sharman Quinney has not tested any apparatus, equipment, fixtures, fittings or services and it is the buyers interests to check the working condition of any appliances. 5: Sharman Quinney has not sought to verify the legal title of the property and buyers must obtain verification from their legal representative. 6: Intending purchasers will be asked to produce identification documentation at a later stage and we would ask your co-operation in order that there will be no delay in agreeing the sale. Ref: YAX204037 - 0001

