



Riddfield Road, Birmingham B36 8NX



welcome to

Riddfield Road, Birmingham

*****THREE BEDROOMS*** FIRST FLOOR MAISONNETTE*** OFF ROAD PARKING** PRIVATE GARDEN** EXTENDED LEASE UPON COMPLETION *** LOW SERVICE CHARGE*** NO ONWARD CHAIN*****



Entrance Hall

Ceiling light point and stairs to first floor.

Lounge

Double-glazed window to front, feature fireplace, radiator, ceiling light and wall light points, laminate flooring, double-glazed door to balcony and doors to kitchen and hallway.

Kitchen

Double-glazed window to front, wall, cupboards and base units, roll top work surface, plumbing for washing machine, extractor fan, ceiling light point and sink and drainer.

Bedroom One

Double-glazed window to rear, laminate flooring, ceiling light point, radiator, and built in wardrobes and cupboards over bed,

Bedroom Two

Ceiling light point, radiator, double-glazed window to rear and laminate flooring.

Bedroom Three

Double-glazed window to rear, ceiling light point, radiator and laminate flooring.

Bathroom

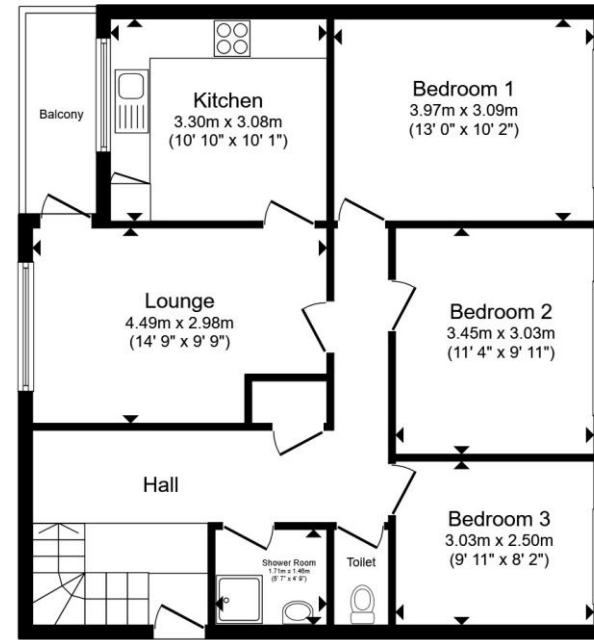
Mains shower, tiling to splash zones, vanity sink and tap, double-glazed obscured window to side, and ceiling light point.

Separate W.C.

Double-glazed obscured window to side, low level w.c. and ceiling light point.

Rear Garden

Private garden, laid to lawn, enclosed to neighbouring boundaries.



Total floor area 75.2 m² (810 sq.ft.) approx

This floor plan is for illustrative purposes only. It is not drawn to scale. Any measurements, floor areas (including any total floor area), openings and orientation are approximate. No details are guaranteed, they cannot be relied upon for any purpose and they do not form part of any agreement. No liability is taken for any error, omission or misstatement. A party must rely upon its own inspection(s). Powered by www.propertybox.io

 shipways



check out more properties at shipways.co.uk



welcome to

Riddfield Road, Birmingham

- THREE BEDROOMS
- FIRST FLOOR MAISONETTE
- OFF ROAD PARKING
- EXTENDED LEASE UPON COMPLETION
- LOW SERVICE CHARGE

Tenure: Leasehold EPC Rating: C

Council Tax Band: A Service Charge: 35.00

Ground Rent: 5.00

This is a Leasehold property with details as follows; Term of Lease 125 years from 17 Oct 1983. Should you require further information please contact the branch. Please Note additional fees could be incurred for items such as Leasehold packs.

offers over

£130,000



Please note the marker reflects the postcode not the actual property

check out more properties at shipways.co.uk



Property Ref:
CAB112050 - 0007

1. MONEY LAUNDERING REGULATIONS Intending purchasers will be asked to produce identification documentation at a later stage and we would ask for your co-operation in order that there is no delay in agreeing the sale. 2. These particulars do not constitute part or all of an offer or contract. 3. The measurements indicated are supplied for guidance only and as such must be considered incorrect. Potential buyers are advised to recheck measurements before committing to any expense. 4. We have not tested any apparatus, equipment, fixtures or services and it is in the buyers interest to check the working condition of any appliances. 5. Where an EPC, or a Home Report (Scotland only) is held for this property, it is available for inspection at the branch by appointment. If you require a printed version of a Home Report, you will need to pay a reasonable production charge reflecting printing and other costs. 6. We are not able to offer an opinion either written or verbal on the content of these reports and this must be obtained from your legal representative. 7. Whilst we take care in preparing these reports, a buyer should ensure that his/her legal representative confirms as soon as possible all matters relating to title including the extent and boundaries of the property and other important matters before exchange of contracts.

Shipways is a trading name of Sequence (UK) Limited which is registered in England and Wales under company number 4268443, Registered Office is Cumbria House, 16-20 Hockliffe Street, Leighton Buzzard, Bedfordshire, LU7 1GN. VAT Registration Number is 500 2481 05.


shipways



0121 747 4722



castlebromwich@shipways.co.uk



258 Chester Road, Castle Bromwich,
BIRMINGHAM, West Midlands, B36 0JE



shipways.co.uk