



Corelli Street

Guide Price £160,000 - £170,000

- Guide Price £160,000 to £170,000
- Spacious open-plan lounge/diner
- Two well-proportioned bedrooms
- First floor family bathroom
- Low-maintenance rear courtyard
- Ideal first-time buy or investment opportunity
- EPC Rating: E



Pinkmove

01633 746088
team@pinkmove.co.uk



About the property

Situated on the popular Corelli Street, this well-presented mid-terrace property offers spacious and versatile accommodation, making it an ideal first-time purchase or investment opportunity.

The ground floor comprises a bright and welcoming open-plan lounge/dining room, featuring neutral décor, fitted carpet, and a charming archway that enhances the sense of space. The staircase is neatly positioned to one side, offering a practical layout with under-stairs storage. To the rear, a modern fitted kitchen provides a range of wall and base units, work surfaces, integrated oven and gas hob, and space for appliances, with direct access out to the courtyard.

Upstairs, the property offers well-proportioned bedrooms along with a family bathroom, providing comfortable living accommodation.

Externally, the property benefits from a low-maintenance rear courtyard, perfect for outdoor seating or entertaining.

Conveniently located close to local amenities, schools and transport links, this property offers excellent access to surrounding areas.





Accommodation

Living Room

Dining Room

Kitchen

Utility

Bedroom 1

Bedroom 2

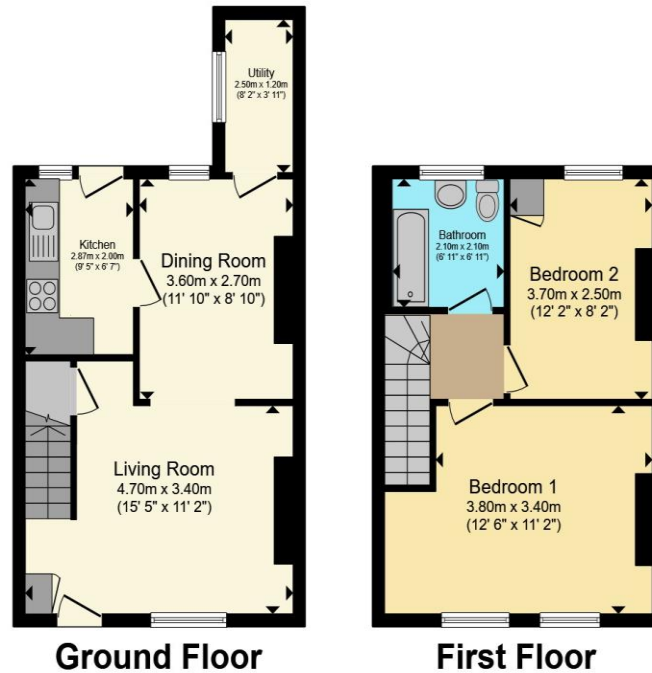
Bathroom

01633 746088

team@pinkmove.co.uk

Pinkmove

Floorplan



Total floor area 69.9 sq.m. (752 sq.ft.) approx

This floor plan is for illustrative purposes only. It is not drawn to scale. Any measurements, floor areas (including any total floor area), openings and orientation are approximate. No details are guaranteed, they cannot be relied upon for any purpose and they do not form part of any agreement. No liability is taken for any error, omission or misstatement. A party must rely upon its own inspection(s). Powered by www.localagent.com

Pinkmove

Important Information

Note while we endeavour to make our sales details accurate and reliable, if there is any point which is of particular interest to you, please contact the office and we will be pleased to confirm the position for you. We have not personally tested any apparatus, equipment, fixtures, fittings or services and cannot verify they are in working order or fit for their purposes. Nothing in these particulars is intended to indicate that carpets or curtains, furnishings or fittings, electrical goods (whether wired or not). Gas fires or light fittings or any other fixtures not expressly included form part of the property offered for sale. This computer generated Floorplan, if applicable, is intended as a general guide to the layout and design of the property. It is not to scale and should not be relied upon for dimensions. Tenure: We cannot confirm the tenure of the property as we have not had access to the legal documents. The buyer is advised to obtain verification from their solicitor or surveyor.

Peter Alan Limited is registered in England and Wales under company number 2073153, Registered Office is Cumbria House, 16-20 Hockliffe Street, Leighton Buzzard, Bedfordshire, LU7 1GN. VAT Registration Number is 500 2481 05. For activities relating to regulated mortgages and non-investment insurance contracts, Peter Alan Limited is an appointed representative of Connells Limited which is authorised and regulated by the Financial Conduct Authority. Connells Limited's Financial Services Register number is 302221. Most buy-to-let

