



Ormonde, Stantonbury, Milton Keynes, MK14 6DH

welcome to

Ormonde, Stantonbury, Milton Keynes

Located in the STANTONBURY area of Milton Keynes, this well-presented, TWO-bedroom, MAISONETTE on Ormonde offers spacious and practical accommodation, ideal for first-time buyers, investors, or downsizers alike. The property benefits from a modern kitchen, two double bedrooms and a GARAGE in a block

Entrance Hall

Door to the front, radiator and stairs to the first floor. Airing cupboard, carpet and loft access. Doors to the lounge/diner, both bedrooms and the bathroom.

Lounge/Diner

TV point, carpet and double-glazed window to the front. Door to the kitchen.

Kitchen

Fitted with a mix of wall and base units with work top over, 1.5 stainless steel sink with mixer tap and drainer, integrated electric oven and an induction hob with extractor fan over. Space for a washing machine and fridge/freezer. Wood effect vinyl flooring, heater and double-glazed window to the rear.

Bedroom One

Built-in storage cupboard, carpet, electric heater and double-glazed window to the front.

Bedroom Two

Electric heater and double-glazed window to the rear.

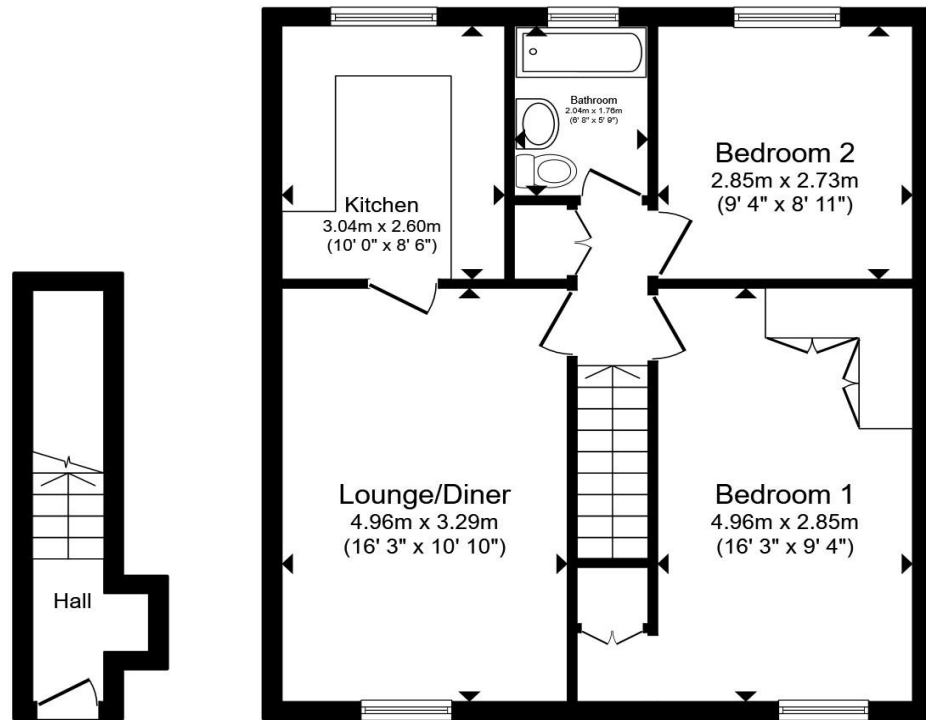
Bathroom

Partially tiled with a wash hand basin with mixer tap set in a floating vanity unit, low-level WC and a bath with a shower screen and shower over. Mirror, extractor fan and double-glazed obscured window to the rear.

Outside

Garage

Garage in a separate block.



Ground Floor

First Floor

Total floor area 61.3 m² (660 sq.ft.) approx

This floor plan is for illustrative purposes only. It is not drawn to scale. Any measurements, floor areas (including any total floor area), openings and orientation are approximate. No details are guaranteed, they cannot be relied upon for any purpose and they do not form part of any agreement. No liability is taken for any error, omission or misstatement. A party must rely upon its own inspection(s). Powered by www.propertybox.io



welcome to
Ormonde,
Stantonbury, Milton Keynes

- TWO DOUBLE BEDROOMS
- MODERN KITCHEN
- BRIGHT LIVING AREA
- GARAGE IN A BLOCK
- CLOSE TO SCHOOLS AND AMENITIES

Tenure: Leasehold EPC Rating: D
Council Tax Band: A Service Charge: 60.00
Ground Rent: 100.00

This is a Leasehold property with details as follows; Term of Lease 125 years from 29 Sep 2002. Should you require further information please contact the branch. Please Note additional fees could be incurred for items such as Leasehold packs.

guide price

£175,000



view this property online [brownandmerry.co.uk/Property/NPL108227](https://www.brownandmerry.co.uk/Property/NPL108227)



Property Ref:
NPL108227 - 0002

1. MONEY LAUNDERING REGULATIONS Intending purchasers will be asked to produce identification documentation at a later stage and we would ask for your co-operation in order that there is no delay in agreeing the sale. 2. These particulars do not constitute part or all of an offer or contract. 3. The measurements indicated are supplied for guidance only and as such must be considered incorrect. Potential buyers are advised to recheck measurements before committing to any expense. 4. We have not tested any apparatus, equipment, fixtures or services and it is in the buyers interest to check the working condition of any appliances. 5. Where an EPC, or a Home Report (Scotland only) is held for this property, it is available for inspection at the branch by appointment. If you require a printed version of a Home Report, you will need to pay a reasonable production charge reflecting printing and other costs. 6. We are not able to offer an opinion either written or verbal on the content of these reports and this must be obtained from your legal representative. 7. Whilst we take care in preparing these reports, a buyer should ensure that his/her legal representative confirms as soon as possible all matters relating to title including the extent and boundaries of the property and other important matters before exchange of contracts.

Brown & Merry is a trading name of Sequence (UK) Limited which is registered in England and Wales under company number 4268443, Registered Office is Cumbria House, 16-20 Hockliffe Street, Leighton Buzzard, Bedfordshire, LU7 1GN. VAT Registration Number is 500 2481 05.


brown & merry



01908 611242



newportpagnell@brownandmerry.co.uk



74A High Street, Newport Pagnell, MILTON
KEYNES, Buckinghamshire, MK16 8AQ



[brownandmerry.co.uk](https://www.brownandmerry.co.uk)