



## 36 The Avenue

, London, NW6 7NP

### £3,100 Per month

Now on the market a lovely two bedroom ground floor recently refurbished property with garden located on The Avenue, Brondesbury NW6. The property comprises:-

- Spacious open plan reception/dining area taking you to a good size garden
- Two double bedrooms (one with an en-suite)
- Wooden flooring
- With walking distance to both local amenities and transport links (Brondesbury Park Station and Salusbury Road Stations)
- Local market on Sundays

Available 23RD OF AUGUST UNFURNISHED

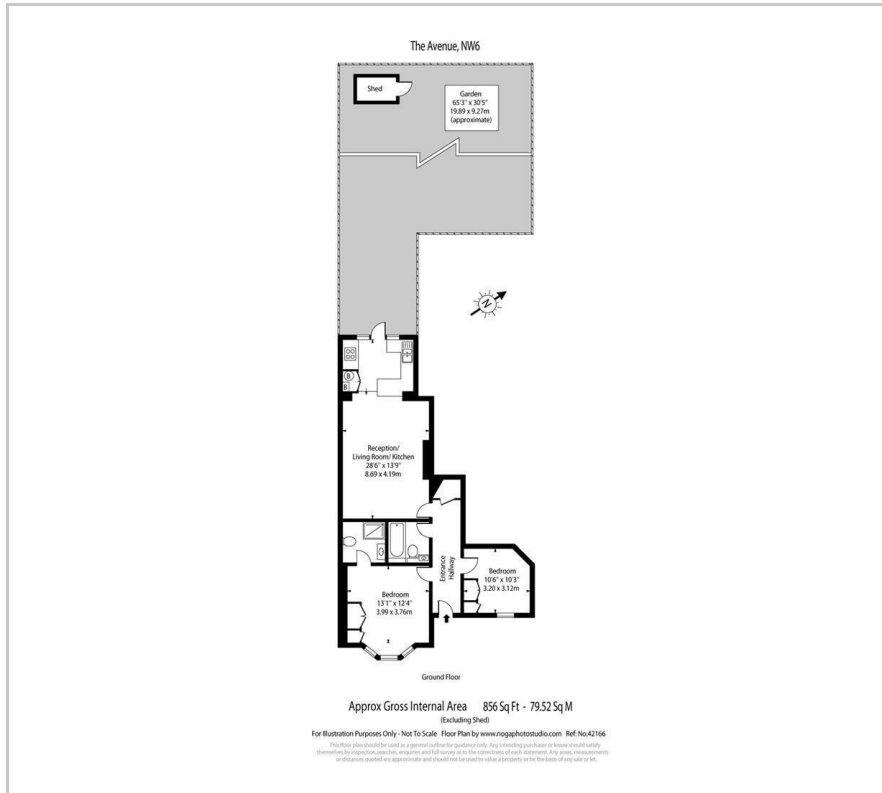
- Ground floor
- Garden
- Local close to station and local amenities
- Large open plan reception/dining area
- Two double bedrooms
- Master bedroom with an en-suite
- Walking distance to transport links
- Unfurnished

### Viewing

Please contact us on 020 3198 4517 if you wish to arrange a viewing appointment for this property or require further information.



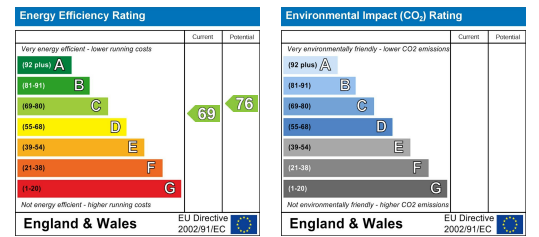
# Floor Plan



# Area Map



# Energy Efficiency Graph



These particulars, whilst believed to be accurate are set out as a general outline only for guidance and do not constitute any part of an offer or contract. Intending purchasers should not rely on them as statements of representation of fact, but must satisfy themselves by inspection or otherwise as to their accuracy. No person in this firm's employment has the authority to make or give any representation or warranty in respect of the property.