



The Stapleford, Plot 99



# The Stapleford, Plot 99

Saltram Meadow. Encombe Street,  
Plymstock Plymouth PL9 7GH  
Plymouth City Centre 2.5 miles Devon Expressway 4.2 miles  
Exeter 43 miles

The Stapleford has a stylish open plan kitchen/living/dining room, a double bedroom, a good-sized bathroom, handy storage cupboards and off-road parking.

- 1 bedroom apartment
- Storage cupboards
- Allocated parking
- Ideal for first time buyers
- Council tax band TBC
- Open plan kitchen/dining/living area
- Good sized bathroom
- 10 year warranty
- Leasehold
- EPC TBC

Guide Price £159,000

## SITUATION

The new homes at Saltram Meadow in Plymstock give you a little bit of everything – just minutes from Plymouth city centre, close to the coast and with scenic countryside all around. Whether you're starting out or moving up, there's something for everyone, with energy-efficient one and two-bedroom apartments and two, three and four-bedroom homes designed for modern family living.



## DESCRIPTION

The Stapleford has a stylish open plan kitchen/living/dining room, a double bedroom, a good-sized bathroom, handy storage cupboards and off-road parking. Ideal if you're a first-time buyer looking for a fresh modern home you can make your own.

## OUTSIDE

This home benefits from an allocated parking space.

## AGENT NOTES

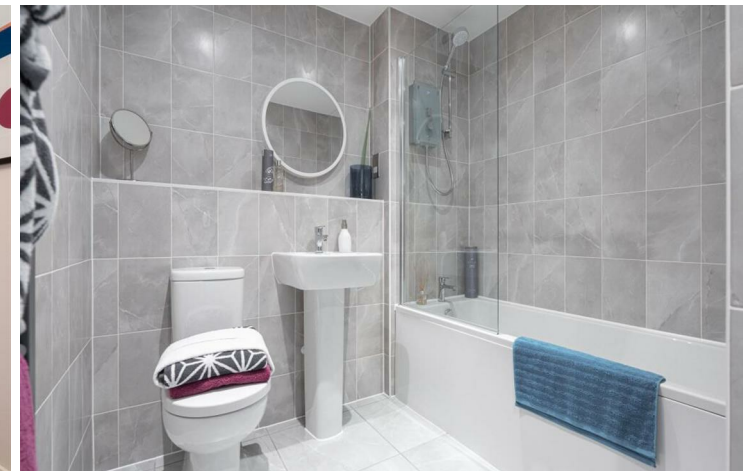
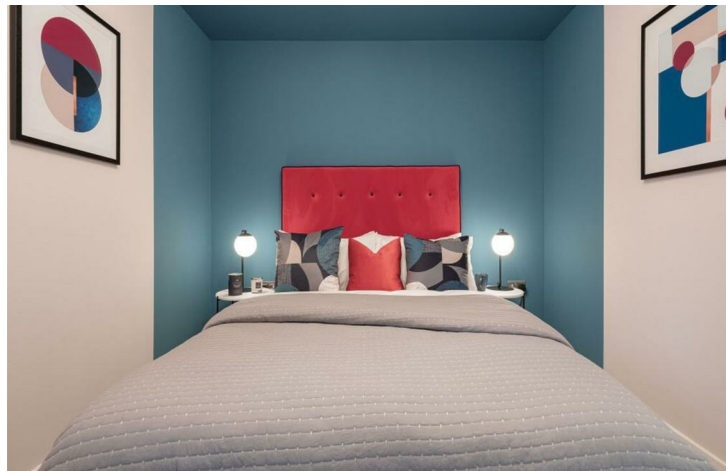
Annual service charge will be payable. Some images may be CGI. Internal photos are provided to illustrate the high-quality finish and are taken from a similar property.

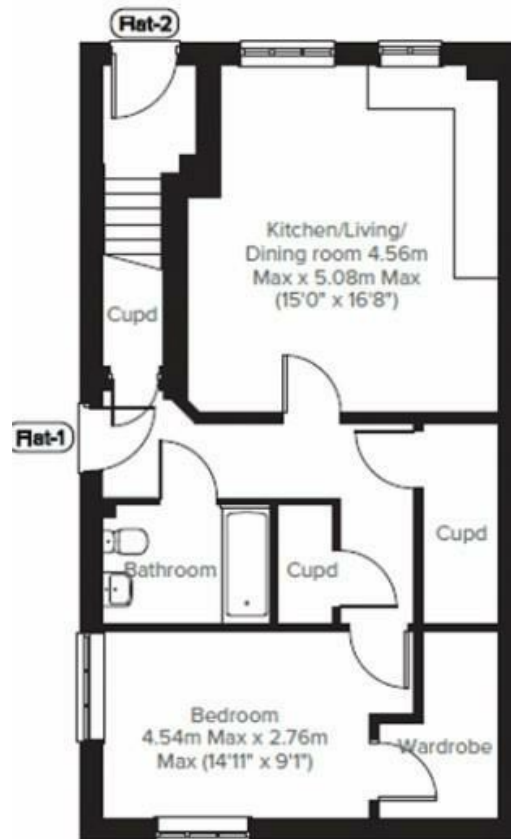
## VIEWINGS

Please call the Stags Plymouth office on 01752 223933.

## DIRECTIONS

Exit the Devon Expressway (A38) at the junction for Plymouth City Centre onto Plymouth Road and then continue along Embankment Road until you reach the left turning signposted Faraday Mill Business Park. Go over the Laira Bridge and onto Billacombe Road until you reach the left turning for Encombe Street where you will find Saltram Meadow.





IMPORTANT: Stags gives notice that: 1. These particulars are a general guide to the description of the property and are not to be relied upon for any purpose. 2. These particulars do not constitute part of an offer or contract. 3. We have not carried out a structural survey and the services, appliances and fittings have not been tested or assessed. Purchasers must satisfy themselves. 4. All photographs, measurements, floorplans and distances referred to are given as a guide only. 5. It should not be assumed that the property has all necessary planning, building regulation or other consents. 6. Whilst we have tried to describe the property as accurately as possible, if there is anything you have particular concerns over or sensitivities to, or would like further information about, please ask prior to arranging a viewing.



Plymhouse, 3 Longbridge Road, Plymouth, PL6 8LT

[plymouth@stags.co.uk](mailto:plymouth@stags.co.uk)

01752 223933



@StagsProperty

Cornwall | Devon | Somerset | Dorset | London