



Llwyn Coed, Blackwood

£260,000

- Detached
- Three Bedrooms
- Garage
- No Onward Chain
- Council Tax: D
- EPC Rating: C





pa peter
alan

About the property

Situated in the highly sought-after area of Llwyn Coed, Blackwood, this three-bedroom detached property presents an excellent opportunity for buyers looking to create their ideal family home. Offered to the market with no onward chain, the property boasts fantastic potential throughout and is perfectly suited to first-time buyers, families, or investors seeking a home they can personalise and add value to.

The accommodation comprises an entrance hallway leading to a spacious lounge, providing a comfortable living space with plenty of natural light. The property also benefits from a well-proportioned kitchen and dining area, offering excellent scope for modernisation and reconfiguration to suit contemporary living requirements.

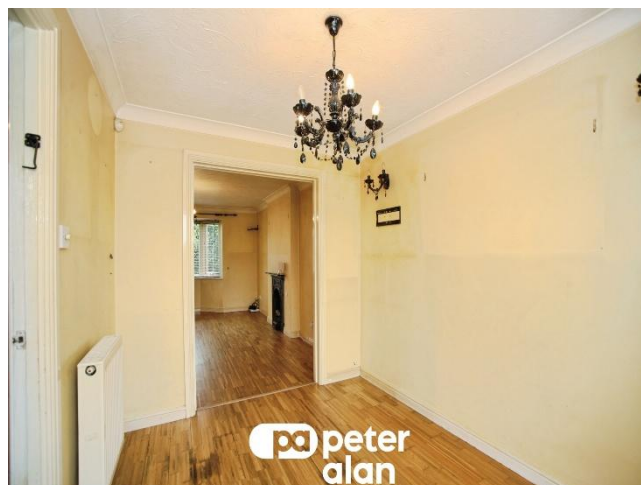
To the first floor are three generously sized bedrooms, all offering flexible accommodation for growing families, home working, or guest use. A family bathroom completes the first-floor layout.

Externally, the property benefits from private front and rear gardens, providing ample outdoor space for relaxation, entertaining, or further landscaping improvements. A detached garage and driveway offer convenient off-road parking and additional storage solutions.

Conveniently located close to Blackwood town centre, the property enjoys easy access to a range of local amenities, schools, leisure facilities, and transport links, making it an ideal location for commuters and families alike.



pa peter
alan



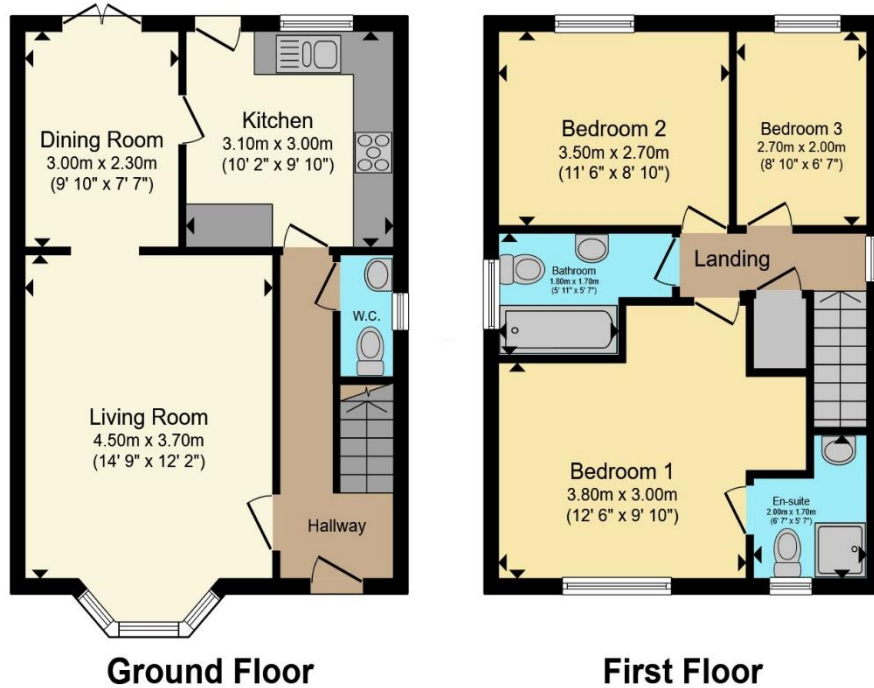
pa peter
alan



01495 231199

blackwood@peteralan.co.uk

Floorplan



Total floor area 84.5 m² (910 sq.ft.) approx

This floor plan is for illustrative purposes only. It is not drawn to scale. Any measurements, floor areas (including any total floor area), openings and orientation are approximate. No details are guaranteed, they cannot be relied upon for any purpose and they do not form part of any agreement. No liability is taken for any error, omission or misstatement. A party must rely upon its own inspection(s). Powered by www.propertybox.io

Important Information

Note while we endeavour to make our sales details accurate and reliable, if there is any point which is of particular interest to you, please contact the office and we will be pleased to confirm the position for you. We have not personally tested any apparatus, equipment, fixtures, fittings or services and cannot verify they are in working order or fit for their purposes. Nothing in these particulars is intended to indicate that carpets or curtains, furnishings or fittings, electrical goods (whether wired or not). Gas fires or light fittings or any other fixtures not expressly included form part of the property offered for sale. This computer generated Floorplan, if applicable, is intended as a general guide to the layout and design of the property. It is not to scale and should not be relied upon for dimensions. Tenure: We cannot confirm the tenure of the property as we have not had access to the legal documents. The buyer is advised to obtain verification from their solicitor or surveyor.

Peter Alan Limited is registered in England and Wales under company number 2073153, Registered Office is Cumbria House, 16-20 Hockliffe Street, Leighton Buzzard, Bedfordshire, LU7 1GN. VAT Registration Number is 500 2481 05. For activities relating to regulated mortgages and non-investment insurance contracts, Peter Alan Limited is an appointed representative of Connells Limited which is authorised and regulated by the Financial Conduct Authority. Connells Limited's Financial Services Register number is 302221. Most buy-to-let