



8 South Street
Torrington, Bideford, Devon EX38 8HE

Price Guide £399,950

A quite beautiful Grade II listed four bedroom character house located in the very heart of Torrington.

Considered one of the oldest properties within the Cavalier town – this home has been lovingly restored throughout using materials and methods sympathetic to its age, character and history – it is quite exquisite. It features a lime render exterior plus lime wash, original windows, fireplaces, floorings and doors, beautiful re-pointed stone and cast-iron radiators whilst now including new electrics, boiler and entirely new heating system.... The house is completely ready for another family to fall in love....

The accommodation briefly consists of a beautiful sitting room with original plaster ceiling and woodburner, a ground floor cloakroom, a stunning central hallway with an originally tiled floor and a split level staircase, also a dining room with fireplace, a large, very well-equipped kitchen that opens with a lovely family space/garden room that leads directly out to the sunny slate patio – quite a feature.

The first floor hosts four very individual bedrooms, all generous in size and all with character. There is a very good size and well presented bathroom.

The outside space to the rear is of particular note... There is a beautiful stone patio that is shielded from the wind yet attracts gorgeous south-facing sunshine – it's perfect for enjoying the morning coffee or a long family lunch. There is a pretty walk along a pathway flanked by charming stone walls and flowers leading to the lawn garden. The garden now includes a hand-made timber studio, purposely made to face the sun. The whole garden is a peaceful and sunny area to enjoy that also offers pedestrian access straight out to the beautiful commons.

Great Torrington in North Devon is a friendly, ancient market town built on a high inland cliff overlooking the River Torridge, known for its spectacular views of rolling countryside and its historical significance during the English Civil War. It offers a vibrant community with independent shops and cafes, access to the Tarka Trail for walking and cycling, and local attractions like RHS Rosemoor and Dartington Crystal. The town is also home to the Torrington Museum, the Plough Arts Centre for arts and events, and the Torrington 1646 museum which focuses on the town's historical importance.

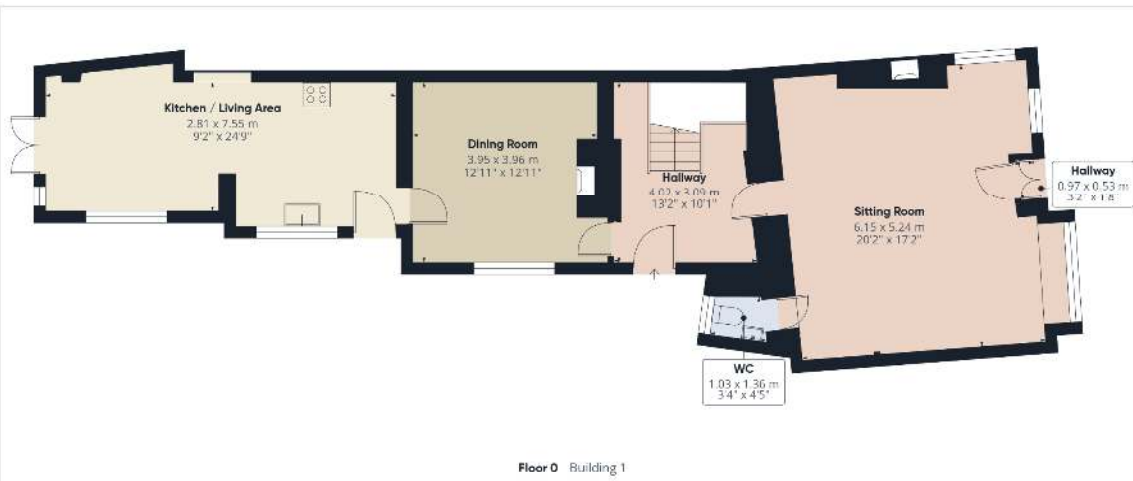
SERVICES

All main services connected. Gas fired central heating with new boiler and new 'magna clean.'

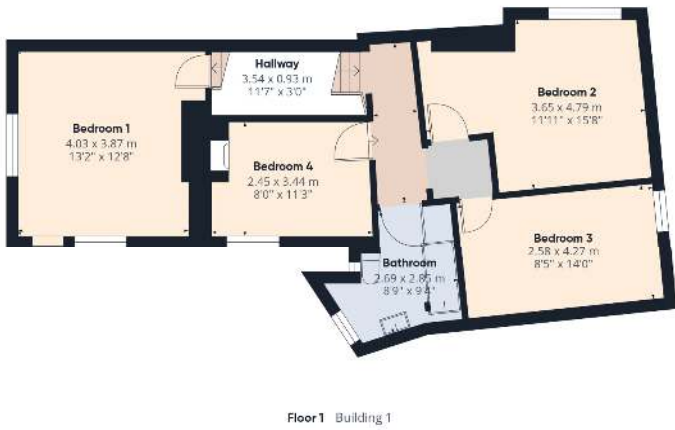
COUNCIL TAX BAND: C

ENERGY PERFORMANCE RATING:
Exempt





Approximate total area⁽¹⁾
 147.9 m²
 1592 ft²



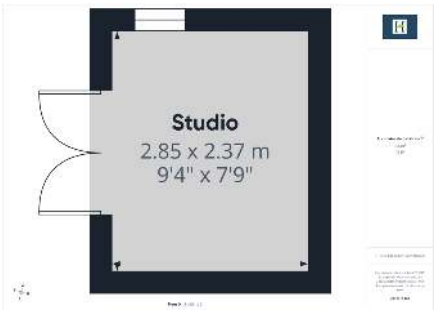
(1) Excluding balconies and terraces

Calculations reference the RICS IPMS 3C standard. Measurements are approximate and not to scale. This floor plan is intended for illustration only.

GIRAFFE360

Invicta House, The Pill, Kingsley Road,
 Bideford, Devon EX39 2PF

t: 01237 476544
f: 01237 422722
e: bideford@hardingresidential.com
www.hardingresidential.com



MONEY LAUNDERING REGULATIONS Intending purchasers will be asked to produce identification documentation at the point of sale and we would ask for your co-operation in order that there will be no delay in progressing a sale. Proof of funding will also be required once an offer has been accepted.

These particulars have been prepared for guidance only. We have not carried out a detailed survey, not tested the services, appliances or specific fittings. Floor plans are not drawn to scale unless stated, measurements and distances are approximate only. Do not rely on them for carpets and furnishings. Photographs are not necessarily current and you should not assume that the contents shown are included in the sale.

