



Blewitt Street

£185,000

- Three good-sized bedrooms
- Modern fitted kitchen
- Useful separate utility room
- Ideal first-time buy or investment opportunity
- Enclosed rear courtyard garden
- Convenient central Newport location
- EPC Rating: C



3 1 2

Pinkmove

01633 746088
team@pinkmove.co.uk



About the property

This well-presented three-bedroom terraced property offers generous living space throughout, making it an ideal purchase for first-time buyers, growing families, or investors.

The property is entered via a front porch leading into a central hallway. To the front is a spacious living room providing a comfortable setting for relaxation, while to the rear a separate dining room offers an excellent space for family meals and entertaining. The modern fitted kitchen is finished with contemporary units, integrated oven and hob, and stylish tiled splashbacks, with access through to a useful utility room offering additional storage and appliance space.

Upstairs, the property comprises three bedrooms, including two well-proportioned doubles and a versatile single room suitable as a nursery, guest room, or home office. The accommodation is completed by a notably large family bathroom fitted with a bath, wash basin, and WC.

Externally, the property benefits from an enclosed rear courtyard garden, providing a low-maintenance outdoor space with scope for seating and outdoor use.

Situated in a convenient central Newport location, the property is within easy reach of local shops, schools, and transport links, with good access to the M4 corridor, making it ideal for commuters.





Accommodation

Living Room

Dining Room

Utility

Kitchen

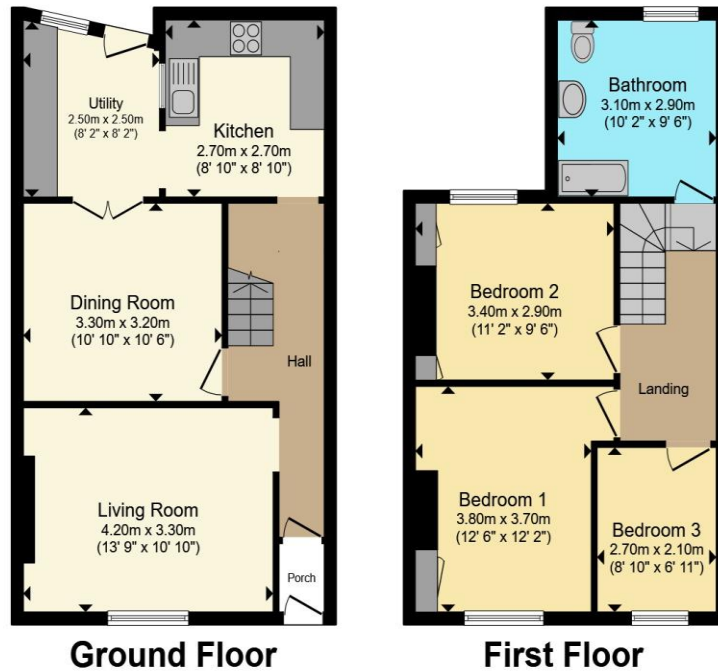
Bedroom 1

Bedroom 2

Bedroom 3

Bathroom

Floorplan



Total floor area 93.6 sq.m. (1,007 sq.ft.) approx

This floor plan is for illustrative purposes only. It is not drawn to scale. Any measurements, floor areas (including any total floor area), openings and orientation are approximate. No details are guaranteed, they cannot be relied upon for any purpose and they do not form part of any agreement. No liability is taken for any error, omission or misstatement. A party must rely upon its own inspection(s). Powered by www.focalagent.com



Important Information

Note while we endeavour to make our sales details accurate and reliable, if there is any point which is of particular interest to you, please contact the office and we will be pleased to confirm the position for you. We have not personally tested any apparatus, equipment, fixtures, fittings or services and cannot verify they are in working order or fit for their purposes. Nothing in these particulars is intended to indicate that carpets or curtains, furnishings or fittings, electrical goods (whether wired or not). Gas fires or light fittings or any other fixtures not expressly included form part of the property offered for sale. This computer generated Floorplan, if applicable, is intended as a general guide to the layout and design of the property. It is not to scale and should not be relied upon for dimensions. Tenure: We cannot confirm the tenure of the property as we have not had access to the legal documents. The buyer is advised to obtain verification from their solicitor or surveyor.

Peter Alan Limited is registered in England and Wales under company number 2073153. Registered Office is Cumbria House, 16-20 Hockliffe Street, Leighton Buzzard, Bedfordshire, LU7 1GN. VAT Registration Number is 500 2481 05. For activities relating to regulated mortgages and non-investment insurance contracts, Peter Alan Limited is an appointed representative of Connells Limited which is authorised and regulated by the Financial Conduct Authority. Connells Limited's Financial Services Register number is 302221. Most buy-to-let

