



Knights Close, Earls Barton
£375,000 Freehold

**Sharman
Quinney**

Key Features



- Three bedrooms
- Spacious living room
- Open-plan kitchen/dining area
- Family bathroom, downstairs cloakroom and ensuite shower room
- Conservatory

This well-proportioned home offers a thoughtfully arranged layout ideal for modern living, combining practical space with comfortable accommodation throughout.

Upon entering the property, you are welcomed into a central hallway providing access to the principal ground floor rooms. The spacious living room offers an excellent area for relaxation and entertaining, with ample natural light creating a bright and inviting atmosphere. To the rear, the kitchen/dining area is well configured to accommodate everyday family life, with sufficient space for both cooking and dining, and convenient access to the conservatory and garden beyond. The kitchen has an integrated fridge/freezer and dishwasher plus a pantry style understairs storage cupboard. The conservatory has fitted remote blinds, heating and electricity.



Upstairs, the property continues to impress with well-sized bedrooms, offering flexibility for families, professionals, or those in need of a home office. The principal bedroom with en-suite bathroom provides a comfortable retreat, while additional bedrooms are ideal for children, guests, or workspace. A family bathroom serves the upper floor, positioned for ease of access from all rooms.

Externally, the property benefits from outdoor space suitable for relaxing or entertaining, along with practical access and potential for further enhancement, subject to the usual consents. This property also benefits from a detached single garage with an off road parking space.

MEASUREMENTS

Lounge - 3.71m x 4.71m (12'2" x 15'5")

Kitchen/Diner - 4.63m x 3.06m (15'2" x 10'1")

Conservatory - 2.91m x 4.63m (9'7" x 15'2")

Downstairs w/c

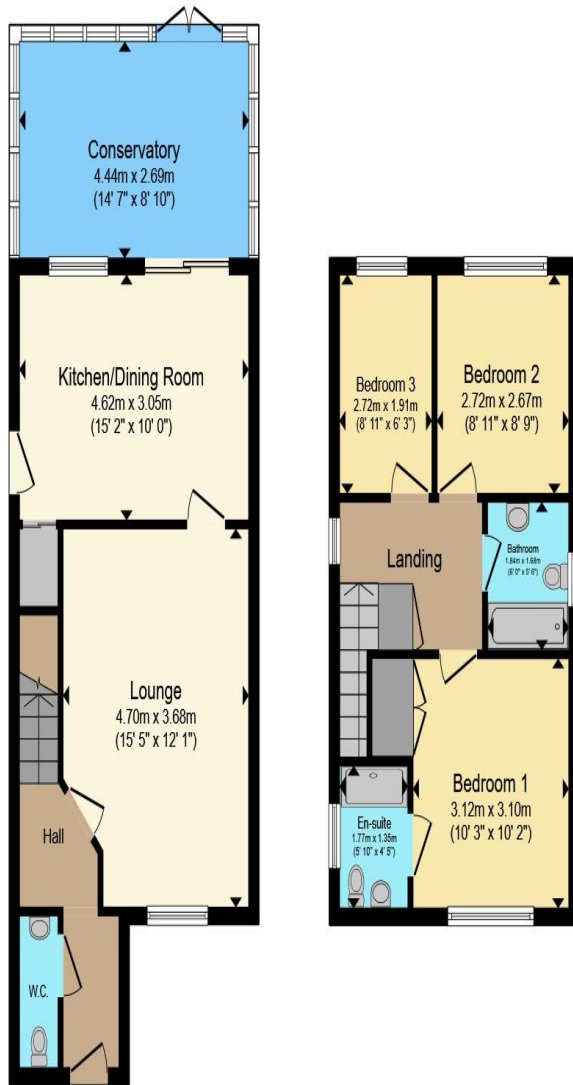
Primary - 3.14m x 3.1m (10'4" x 10'2") with ensuite

Bedroom 2 - 3.72m x 2.67m (12'3" x 8'9")

Bedroom 3 - 1.93m x 2.71m (6'4" x 8'11")

Family Bathroom





Ground Floor

First Floor

Total floor area 92.1 m² (991 sq.ft.) approx

This floor plan is for illustrative purposes only. It is not drawn to scale. Any measurements, floor areas (including any total floor area), openings and orientation are approximate. No details are guaranteed, they cannot be relied upon for any purpose and they do not form part of any agreement. No liability is taken for any error, omission or misstatement. A party must rely upon its own inspection(s). Powered by www.propertybox.io

**Sharman
Quinney**

To view this property call Sharman Quinney on:
01832 735589

Selling your property?

Contact us to arrange a **FREE** home valuation.

 01832 735589

 16 High Street, THRAPSTON, Northamptonshire,
NN14 4JH

 thrapston@sharmanquinney.co.uk

 www.sharmanquinney.co.uk



 SCAN ME



Sharman Quinney Holdings Limited is registered in England and Wales under company number 4174227, Registered Office is Cumbria House, 16-20 Hockliffe Street, Leighton Buzzard, Bedfordshire, LU7 1GN. VAT Registration Number is 500 2481 05.

1: These particulars do not constitute part or all of an offer or contract. 2: The measurements indicated are supplied for guidance only and as such must be considered incorrect. 3: Potential buyers are advised to recheck the measurements before committing to any expense. 4: Sharman Quinney has not tested any apparatus, equipment, fixtures, fittings or services and it is the buyers interests to check the working condition of any appliances. 5: Sharman Quinney has not sought to verify the legal title of the property and buyers must obtain verification from their legal representative. 6: Intending purchasers will be asked to produce identification documentation at a later stage and we would ask your co-operation in order that there will be no delay in agreeing the sale. Ref: THR103818 - 0001

