



Mark Antony
SALES & LETTING AGENTS

To LET

Bishopdale Drive Rainhill



PROPERTY DESCRIPTION

With sleek, modern interiors, this rental property is available now. The bright open-plan lounge and dining area benefits from plenty of natural light and offers direct access to the rear patio. The contemporary kitchen features built-in appliances, ideal for everyday use. Upstairs are two double bedrooms, one with fitted wardrobes, plus a versatile third room suitable as a bedroom, nursery or office. A stylish bathroom with walk-in shower completes the home. A standout feature is the generous rear garden, perfect for relaxing or entertaining. Close to local amenities and motorway links.

PROPERTY FEATURES

- Modern Interior
- Stylish Kitchen
- Three Bedrooms
- Driveway Parking
- Sleek Bathroom
- Generous Garden Space
- Close to Local Amenities
- Close to Motorway Links
- Semi-Detached Property
- Unfurnished Home



NOTES FOR PROSPECTIVE TENANTS

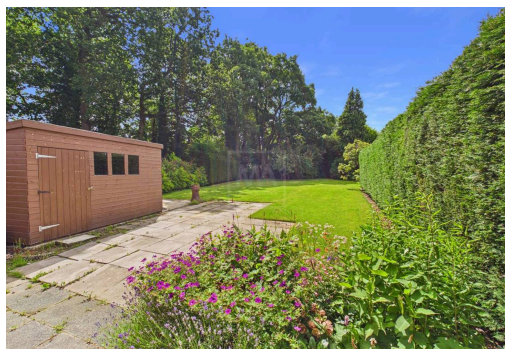
- Driveway Parking
- Unfurnished Home
- Appliances Integrated: Oven, Hob, Extractor Fan, Fridge/Freezer, Washing Machine and Dishwasher.
- Pets considered on case by case basis

RENTAL AVAILABLE DATE

- 22nd June 2026

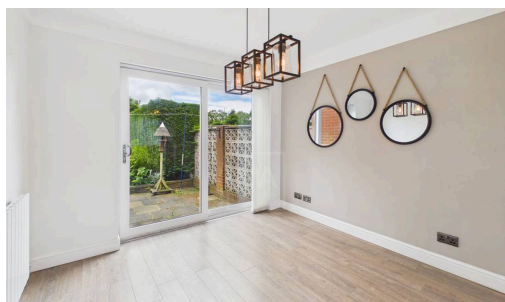
GENERAL INFORMATION

- Council Tax band: C
- EPC Energy Efficiency Rating: C



£50 FOR YOU! *and they sign up fully managed with us.

if you refer a Warrington landlord*



MA
Mark Antony

Note: These details have been prepared as a general guide only and do not constitute any part of any contract. The function of any appliances, services, sockets or cables are not guaranteed. Any interested party should satisfy themselves about any matter of importance to them and not rely on the contents of these particulars when making the decision to offer.

SCAN ME!

safeagent **The Property Ombudsman**