



Bromyard Avenue, W3

£1,000,000

A truly stunning three bedroom, two bathroom new build detached family home with off street parking. The property offers almost 1400 sq.ft of accommodation and showcases exceptional attention to detail throughout, featuring a bespoke Italian kitchen, Italian quartz worktops, and herringbone oak flooring.



The property has three double bedrooms with the principal bedroom including custom-built wardrobes and an immaculately finished Ensuite bathroom. There is also an additional office/study room.

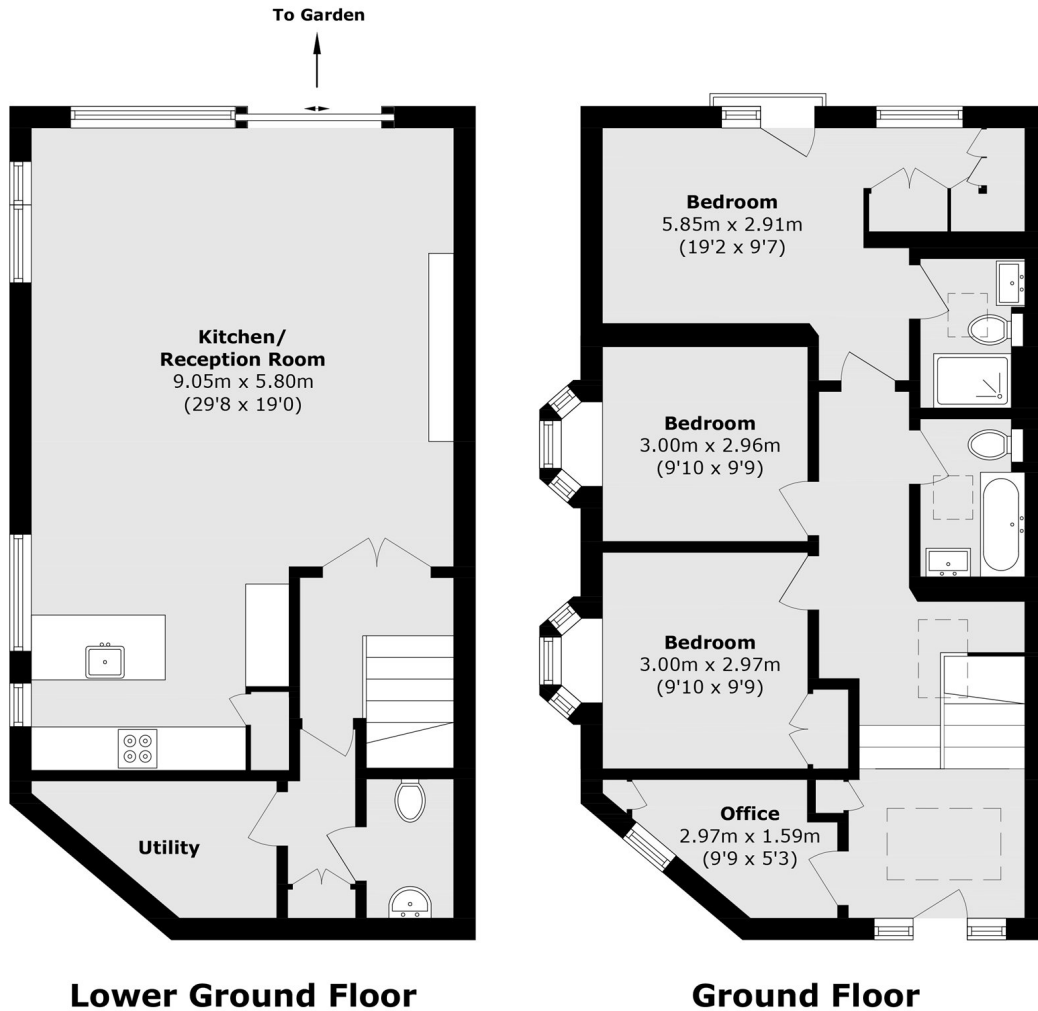
Downstairs is an impressive kitchen, reception and dining space including bespoke built in TV units and additional storage. Large sliding doors flood the room with light and offer access out to the private patio and landscaped garden. There is also a downstairs WC and separate utility area.

The property benefits from under floor heating throughout and is offered with no onward chain.

Located moments from Acton Park and East Acton station and just over half a mile from the shops and amenities of Churchfield Road and Acton Central station.

- Three Bedrooms • Two Bathrooms • Detached •
 - Off Street Parking • Stunning Finish • 10 Year Warranty •
-





Total area (approx.): 131.0 sq. m (1,410.0 sq. ft)

Robertson Smith & Kempson Acton Sales
137 High Street, Acton,
London, W3 6LY
020 8896 3996
actonsales@robertsonsmithandkempson.co.uk

Energy Rating: . We aim to make our particulars both accurate and reliable. However they are not guaranteed; nor do they form part of an offer or contract. If you require clarification on any points then please contact us, especially if you're traveling some distance to view. Please note that appliances and heating systems have not been tested and therefore no warranties can be given as to their good working order.