



Drummond Hay, Willen, Milton Keynes, MK15 9EZ

welcome to

Drummond Hay, Willen, Milton Keynes

We are delighted to offer this RARELY AVAILABLE, two-bedroom home in the desirable area of Willen. The property features a modern REFITTED KITCHEN, stylish family bathroom, two double bedrooms, and ALLOCATED PARKING. The rear garden includes a fully insulated cabin with power and heating.

Entrance Hall

Double-glazed door to the front, stairs to the first floor, Karndean flooring and electric heater.

Lounge

Electric fireplace, TV point, Karndean flooring, exposed brick wall and electric heating. Double-glazed window to the front.

Kitchen

Fitted with a mix of wall and base units with work top over, glass splashback, stainless steel sink with drainer, integrated electric oven, microwave and induction hob with extractor fan over. Integrated dishwasher and fridge/freezer. Breakfast bar and Karndean flooring.

First Floor Landing

Stairs from the ground floor, solatube and doors to all bedrooms and the family bathroom.

Bedroom One

Fitted wardrobes with hanging space and storage, TV point, carpet and 2 double-glazed windows to the rear.

Bedroom Two

Built-in wardrobe with hanging space and storage plus a fitted dressing table. Airing cupboard housing the hot water tank. TV point and Karndean flooring. 2 double-glazed windows to the front.

Bathroom

Newly fitted bathroom which is fully tiled with a wash hand basin with a quartz worktop, low-level WC and a bath with a shower over. Wood effect vinyl flooring, solatube, and extractor fan.

Loft

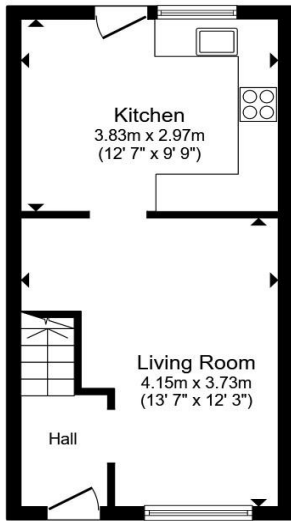
Access, via a loft ladder, to a fully boarded loft with built-in storage and a pump for the shower.

Outside Rear Garden

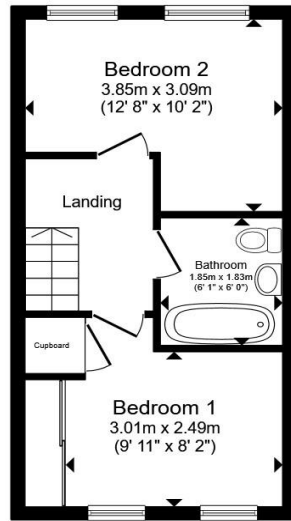
Private enclosed rear garden laid with decking and with outside power. Insulated cabin with heating, power and light.

Agents Note

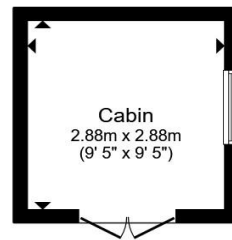
Parking of commercial vehicles by residents in the allocated parking bays is not permitted as stated on the lease.



Ground Floor



First Floor



Outbuilding

Total floor area 69.3 m² (745 sq.ft.) approx

This floor plan is for illustrative purposes only. It is not drawn to scale. Any measurements, floor areas (including any total floor area), openings and orientation are approximate. No details are guaranteed, they cannot be relied upon for any purpose and they do not form part of any agreement. No liability is taken for any error, omission or misstatement. A party must rely upon its own inspection(s). Powered by www.propertybox.io



welcome to
Drummond Hay,
Willen, Milton Keynes

- IMMACULATE TWO BEDROOM HOME
- REFITTED KITCHEN AND BATHROOM
- DOUBLE BEDROOMS
- ALLOCATED PARKING
- PRIVATE REAR GARDEN

Tenure: Freehold EPC Rating: D
Council Tax Band: B

guide price

£280,000



view this property online [brownandmerry.co.uk/Property/NPL108228](https://www.brownandmerry.co.uk/Property/NPL108228)



Property Ref:
NPL108228 - 0008

1. MONEY LAUNDERING REGULATIONS Intending purchasers will be asked to produce identification documentation at a later stage and we would ask for your co-operation in order that there is no delay in agreeing the sale. 2. These particulars do not constitute part or all of an offer or contract. 3. The measurements indicated are supplied for guidance only and as such must be considered incorrect. Potential buyers are advised to recheck measurements before committing to any expense. 4. We have not tested any apparatus, equipment, fixtures or services and it is in the buyers interest to check the working condition of any appliances. 5. Where an EPC, or a Home Report (Scotland only) is held for this property, it is available for inspection at the branch by appointment. If you require a printed version of a Home Report, you will need to pay a reasonable production charge reflecting printing and other costs. 6. We are not able to offer an opinion either written or verbal on the content of these reports and this must be obtained from your legal representative. 7. Whilst we take care in preparing these reports, a buyer should ensure that his/her legal representative confirms as soon as possible all matters relating to title including the extent and boundaries of the property and other important matters before exchange of contracts.

Brown & Merry is a trading name of Sequence (UK) Limited which is registered in England and Wales under company number 4268443, Registered Office is Cumbria House, 16-20 Hockliffe Street, Leighton Buzzard, Bedfordshire, LU7 1GN. VAT Registration Number is 500 2481 05.

brown & merry



01908 611242



newportpagnell@brownandmerry.co.uk



74A High Street, Newport Pagnell, MILTON
KEYNES, Buckinghamshire, MK16 8AQ



[brownandmerry.co.uk](https://www.brownandmerry.co.uk)