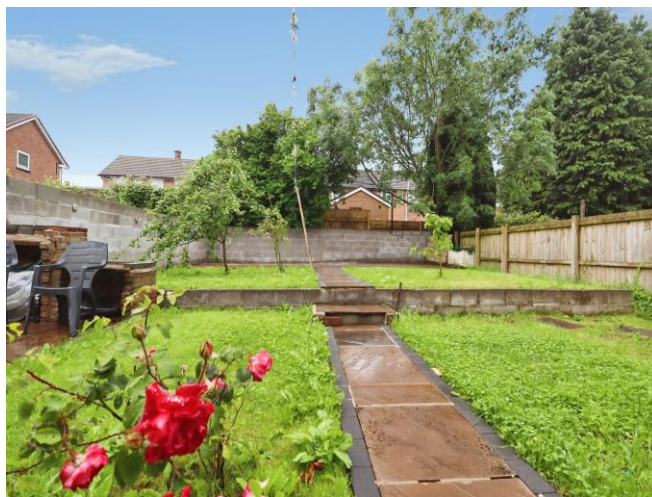




Bronte Crescent, £240,000

- Three bedroom semi-detached home
- Chain free
- Off-road parking
- Fitted kitchen/diner
- Ideal for first-time buyers or families
- EPC Rating: D



3 1 1



About the property

3 Bedroom Semi-Detached House with Off-Road Parking

A well-presented three-bedroom semi-detached property, ideally suited to first-time buyers, families, or investors. The home benefits from off-road parking and is conveniently located close to local amenities, schools, and transport links.

The accommodation briefly comprises an entrance hallway, spacious living room, and a fitted kitchen/diner with access to the rear garden. To the first floor are three bedrooms (two doubles and one single) along with a family bathroom.

Externally, the property offers off-road parking to the front and a private rear garden, perfect for outdoor entertaining.

Further benefits include gas central heating and double glazing throughout.

Early viewing is highly recommended.



Accommodation

Kitchen / Diner

25' 5" max x 13' 3" max (7.75m max x 4.04m max)

Lounge

17' 9" x 10' 7" (5.41m x 3.23m)

Bedroom One

12' max x 10' 2" max (3.66m max x 3.10m max)

Bedroom Two

9' 6" x 9' 5" (2.90m x 2.87m)

Bedroom Three

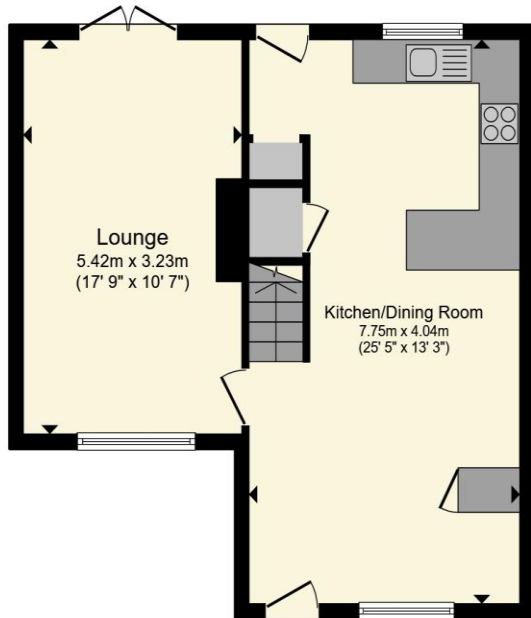
8' 2" x 8' 1" (2.49m x 2.46m)

Bathroom

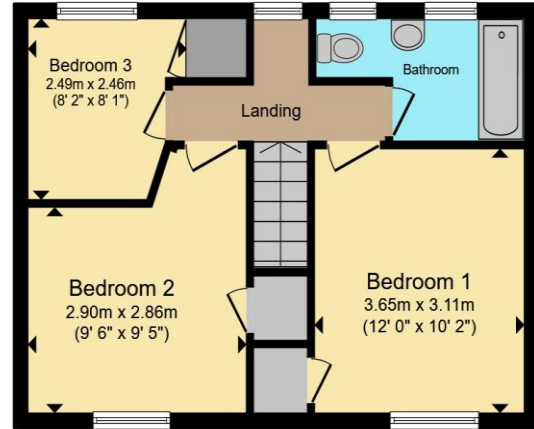
02920 792888

rumney@peteralan.co.uk

Floorplan



Ground Floor



First Floor

Total floor area 88.8 m² (955 sq.ft.) approx

This floor plan is for illustrative purposes only. It is not drawn to scale. Any measurements, floor areas (including any total floor area), openings and orientation are approximate. No details are guaranteed, they cannot be relied upon for any purpose and they do not form part of any agreement. No liability is taken for any error, omission or misstatement. A party must rely upon its own inspection(s). Powered by www.propertybox.io



Important Information

Note while we endeavour to make our sales details accurate and reliable, if there is any point which is of particular interest to you, please contact the office and we will be pleased to confirm the position for you. We have not personally tested any apparatus, equipment, fixtures, fittings or services and cannot verify they are in working order or fit for their purposes. Nothing in these particulars is intended to indicate that carpets or curtains, furnishings or fittings, electrical goods (whether wired or not). Gas fires or light fittings or any other fixtures not expressly included form part of the property offered for sale. This computer generated Floorplan, if applicable, is intended as a general guide to the layout and design of the property. It is not to scale and should not be relied upon for dimensions. Tenure: We cannot confirm the tenure of the property as we have not had access to the legal documents. The buyer is advised to obtain verification from their solicitor or surveyor.

Peter Alan Limited is registered in England and Wales under company number 2073153. Registered Office is Cumbria House, 16-20 Hockliffe Street, Leighton Buzzard, Bedfordshire, LU7 1GN. VAT Registration Number is 500 2481 05. For activities relating to regulated mortgages and non-investment insurance contracts, Peter Alan Limited is an appointed representative of Connells Limited which is authorised and regulated by the Financial Conduct Authority. Connells Limited's Financial Services Register number is 302221. Most buy-to-let

