



## Graig Y Fedw, £195,000

- Three Bedrooms
- Semi Detached
- Southwest Facing Garden
- Good transport links
- Rear lane access to Garden
- Hard stand for off road Parking
- Good Location
- EPC Rating: Awaited



 3  1  1



## About the property

This well-presented three-bedroom semi-detached property offers a practical and comfortable living space, ideal for families, first-time buyers, or investors alike. The home is thoughtfully laid out and provides a welcoming atmosphere throughout.

. Upon entering the property, you are greeted by a bright hallway leading into a spacious and inviting living room, perfect for relaxing or entertaining guests. The adjoining kitchen is functional and well-equipped, offering ample storage and workspace for everyday cooking and dining needs. The ground floor also benefits from a conveniently located bathroom, fitted with modern fixtures and designed for ease of use.

Upstairs, the property features three well-proportioned bedrooms, each offering flexibility for family living, guest accommodation, or home office space. The rooms are filled with natural light and provide a comfortable environment for rest and relaxation.

Externally, the property boasts a private rear garden, ideal for outdoor activities, gardening, or simply enjoying the warmer months. To the front, there is additional space that enhances the property's overall appeal.

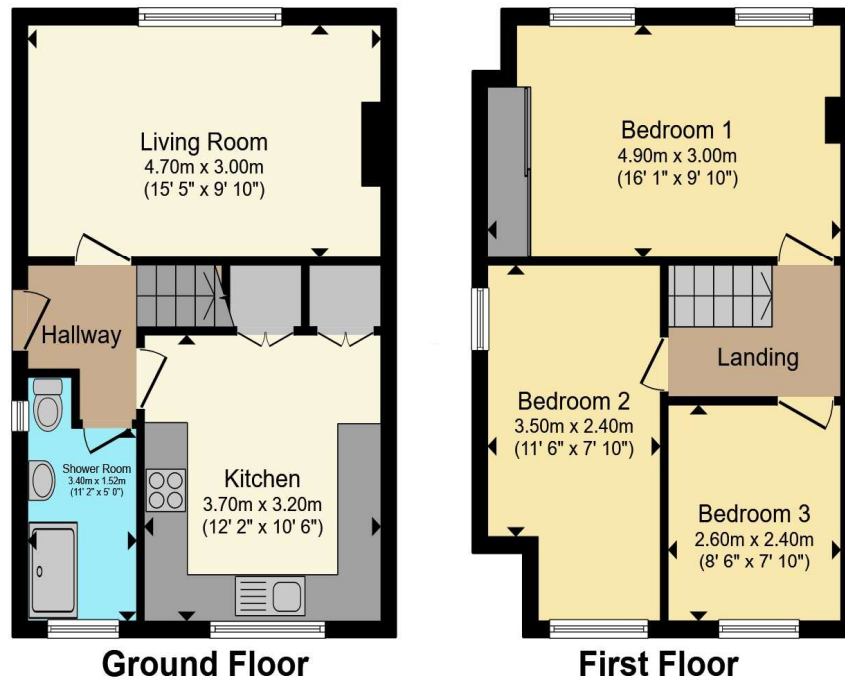
Situated in a convenient location, the property is close to local amenities, schools, and transport links, making daily life both accessible and straightforward. This charming home offers an excellent opportunity to enjoy a balance of space, functionality, and location.



02920 867611

caerphilly@peteralan.co.uk

## Floorplan



Total floor area 74.4 m<sup>2</sup> (800 sq.ft.) approx

This floor plan is for illustrative purposes only. It is not drawn to scale. Any measurements, floor areas (including any total floor area), openings and orientation are approximate. No details are guaranteed, they cannot be relied upon for any purpose and they do not form part of any agreement. No liability is taken for any error, omission or misstatement. A party must rely upon its own inspection(s). Powered by [www.propertybox.io](http://www.propertybox.io)



## Important Information

Note while we endeavour to make our sales details accurate and reliable, if there is any point which is of particular interest to you, please contact the office and we will be pleased to confirm the position for you. We have not personally tested any apparatus, equipment, fixtures, fittings or services and cannot verify they are in working order or fit for their purposes. Nothing in these particulars is intended to indicate that carpets or curtains, furnishings or fittings, electrical goods (whether wired or not). Gas fires or light fittings or any other fixtures not expressly included form part of the property offered for sale. This computer generated Floorplan, if applicable, is intended as a general guide to the layout and design of the property. It is not to scale and should not be relied upon for dimensions. Tenure: We cannot confirm the tenure of the property as we have not had access to the legal documents. The buyer is advised to obtain verification from their solicitor or surveyor.

Peter Alan Limited is registered in England and Wales under company number 2073153, Registered Office is Cumbria House, 16-20 Hockliffe Street, Leighton Buzzard, Bedfordshire, LU7 1GN. VAT Registration Number is 500 2481 05. For activities relating to regulated mortgages and non-investment insurance contracts, Peter Alan Limited is an appointed representative of Connells Limited which is authorised and regulated by the Financial Conduct Authority. Connells Limited's Financial Services Register number is 302221. Most buy-to-let

