



# THE RIVUS

WANTAGE

LIVE EFFORTLESSLY

Discover The Rivas, an exceptional community of 50 beautifully crafted apartments exclusively for the over 55's, set within a charming town steeped in history and designed to provide a quality of life that exceeds expectations.



**THE RIVUS**  
WANTAGE



## AN EFFORTLESS LIFESTYLE

Delivering an exceptional lifestyle quality, The Rivus and its beautiful craftsmanship welcomes you to luxury apartment living, conveniently located in a charming town rich in history and awash with natural beauty.

Discover an effortless lifestyle, where every day is a pleasure and every moment a treasure.

## LIFE AT THE RIVUS

Spectacular, airy 1, 2 & 3 bedroom apartments just moments away from amenities and countryside make the homes at The Rivus unique.

Located in the beautiful historic South Oxfordshire town of Wantage, The Rivus is an exceptional estate that redefines the possibilities of luxurious, low maintenance living.

Combining a sublimely quiet position within close proximity to the activities and amenities of the town, The Rivus has been designed with convenience in mind.

Whether you wish to sit quietly on your balcony and enjoy the serenity of the estate, relax in the Wellness Suite or explore further afield using a car from The Car Club, The Rivus provides an effortless life with its variety of amenities and services.







## RELAX AND UNWIND

Step inside The Retreat, a luxury health and lifestyle space, fully fitted with a yoga studio, infrared sauna and beauty treatment room – it's all yours, right on your doorstep to use as you please.

Here you can enjoy a range of wellness activities, from nutrition sessions and cookery demonstrations to exercise classes and lifestyle talks, all delivered by experienced health and lifestyle professionals. Weekly classes aim to help residents improve wellbeing, build community, develop relationships, and explore new hobbies.

## A SAFE HAVEN

At The Rivus, it's easy to make the most of life with peace of mind that you and your home are well taken care of. Whether you're popping out for some shopping, or sailing off on a relaxing cruise, the security of the estate means you can enjoy your time away, worry free.

The Rivus also offers a safe haven for family and friends and the spacious apartments and shared areas are designed to welcome the energy of grandchildren.

From family walks in the garden to snuggling up for a movie in your cosy living room, you're in the perfect place to create moments of joy with the ones you love.





## THOUGHTFUL SERVICE

The Estate Manager is on hand and committed to ensuring the smooth running of the estate.

Regularly hailed by owners as one of the most significant and positive elements of Cognatum life, our Estate Managers not only welcome and assist new residents as they are settling in, but continue to be supportive in day-to-day life. Without intruding on residents' privacy, they are always on hand for advice or in an emergency.

## WHAT'S ON OFFER

With a wide range of services and conveniences, The Rivus offers a welcoming, comfortable life that benefits the health, relaxation and social lives of those who live here.

## ONSITE FACILITIES

'The Retreat' Wellness Suite

The Rivus Car Club

'The Hub', a communal socialising space

Internal courtyard

Roof terrace

Guest suite

Secure parcel store

High-speed fibre broadband

Tunstall telecare platform



## CAR-FREE CONVENIENCE

The Rivus affords residents a unique opportunity to enjoy a different lifestyle without the responsibilities of driving.

Within walking distance from the shops, restaurants, public transport, medical centres and local attractions of Wantage town centre, The Rivus caters perfectly for a lifestyle free from car ownership.

Enjoy a short stroll into town, an Estate Manager arranged taxi service, stress-free airport transfers and stylish travel to social events in a pre-arranged executive mini-bus. Convenient time slots can also be booked to have groceries delivered straight to your front door.

## EFFORTLESS TRAVEL

For those wishing to drive, take advantage of The Rivus Car Club, a free of charge membership. Being a member makes travelling a dream. Ideal for running quick errands, days out and shopping trips, the Car Club is the perfect solution for effortless travel without the every day hassles of car ownership.

With a selection of high-quality cars located onsite, the Car Club provides you with a reliable, low cost way to get to where you need to be.

## AT HOME IN WANTAGE

Located in the small historic market town in the Vale of White Horse, Wantage is a charming Oxfordshire Market Town and famed for being the birthplace of King Alfred the Great.

Surrounded by the incredible green vistas of the Berkshire Downs and a hotspot for walkers and cyclists alike, Wantage is the perfect base to explore the nearby villages and enjoy wonderful views of the countryside along the way.

An array of footpaths including the Ridgeway and Icknield Way lead to captivating places steeped in history, like the Millennium stones at Ardington and the unspoilt village of Lockinge.





## SOMETHING FOR EVERYONE

Wantage is just moments away from the home comforts of The Rivas and is well served by a variety of quirky shops, cafés and restaurants.

Fine dining, home-made traditional pub meals, authentic curry and Mediterranean delights are among the delicious offerings to choose from when eating out in Wantage.

If it's shopping you're after, dotted around you'll find a good mix of independent shops and national brands. Whether it's a unique piece of jewellery, a new book or a good bottle of wine, Wantage town centre has many treasures to offer the curious shopper.

For the home cooks who delight in seasonal produce, the weekly markets offer a lovely range of fresh local produce.

## GETTING TO KNOW WANTAGE

It's easy to make the most of everything Wantage has to offer. Stroll along the high street where you'll find everything from artisan markets to independent clothing stores.

Pick up some fresh flowers and a bottle of wine, or grab a coffee with friends and loved ones at one of its cosy cafés.



### Nature

- 1 / Letcombe Valley
- 2 / Bejeman Millennium Park
- 3 / Deer Park

### Eating & drinking

- 4 / Patisserie Genie
- 5 / Yummy Thai
- 6 / The Baytree Café
- 7 / Umami Delicatessen
- 8 / The Ronin
- 9 / Masooms
- 10 / Wildwood
- 11 / Marmalade Café

### Shopping

- 12 / Sainsbury's
- 13 / Waitrose
- 14 / Kings Park

### Health

- 15 / Wantage Community Hospital
- 16 / Lloyds Pharmacy

### History

- 17 / The Ridgeway
- 18 / Vale & Downland Museum



INSIDE THE RIVUS



## THE HUB

Get together with friends and neighbours in this lively and spacious social area. Enjoy comfortable private seating areas and community events including movie nights, televised sporting events and the latest episodes of your favourite series. Have a laugh challenging friends to a game of cards, chess or backgammon. Nurture your creative side with a crafting project or simply while away the hours with your favourite novel and a glass of wine from the honesty bar.

## A PRIVATE SANCTUARY

The Terrace is the perfect shady spot with private and communal spaces, ideal for family and friends coming together to catch up and take in the wonderful surroundings.

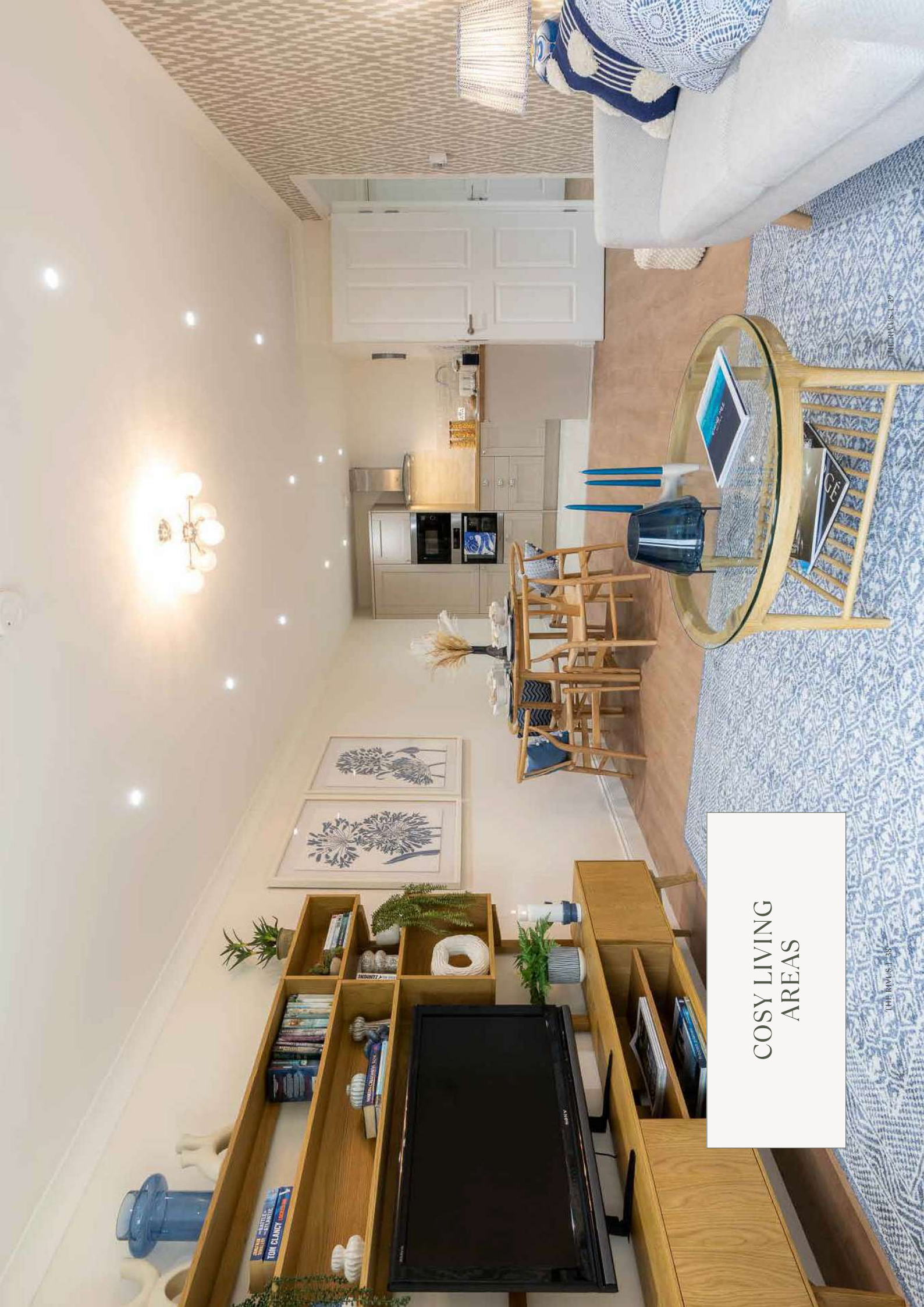
Featuring a range of plants and comfortable furniture, this light open space is a relaxing, sociable area that offers the perfect place to come together with neighbours over lunch.



WELCOMING  
GUEST SUITE



# FUNCTIONAL KITCHENS



COSY LIVING AREAS



## SPACIOUS BEDROOMS



LUXURIOUS  
BATHROOMS

## KITCHEN

## TERRACES / BALCONIES

- Communal rooftop terrace

## BATHROOM

- Basin with mixer tap
- Shower with screen
- Separate hand shower to baths and shower rooms
- Vanity unit with top mounted washbasin
- Shaving point
- Full height walls tiled in high quality modern ceramic tiles
- Floors tiled in full body non slip porcelain tiles
- Underfloor comfort heating
- Mounted WC with concealed cistern
- Acrylic bath

## ELECTRICAL

- Energy efficient LED down-lighters
- 5 amp lighting sockets to bedroom and living room areas
- Electrical outlets and switches polished chrome
- Media connection hub to living room and bedrooms enabled for:
  - Digital HD TV / Sky Plus HD / Sky Q
  - Wired data network
  - Telephone points
  - High-speed fibre optic linked directly into each apartment

## HEATING & COOLING

- Underfloor heating system throughout with wall-mounted digital thermostats in all rooms

## SECURITY & PEACE OF MIND

- Services of a highly trained estate manager
- Access to apartments via video entry phone system
- Entry to building via key entry fob
- Main entrance video entry screen and interface
- Mains supply smoke and heat detectors to all apartments and communal areas
- 24-hour CCTV coverage to external communal areas
- 10 year Premier Building Ins Policy
- Wireless emergency personal alarm with 24h response

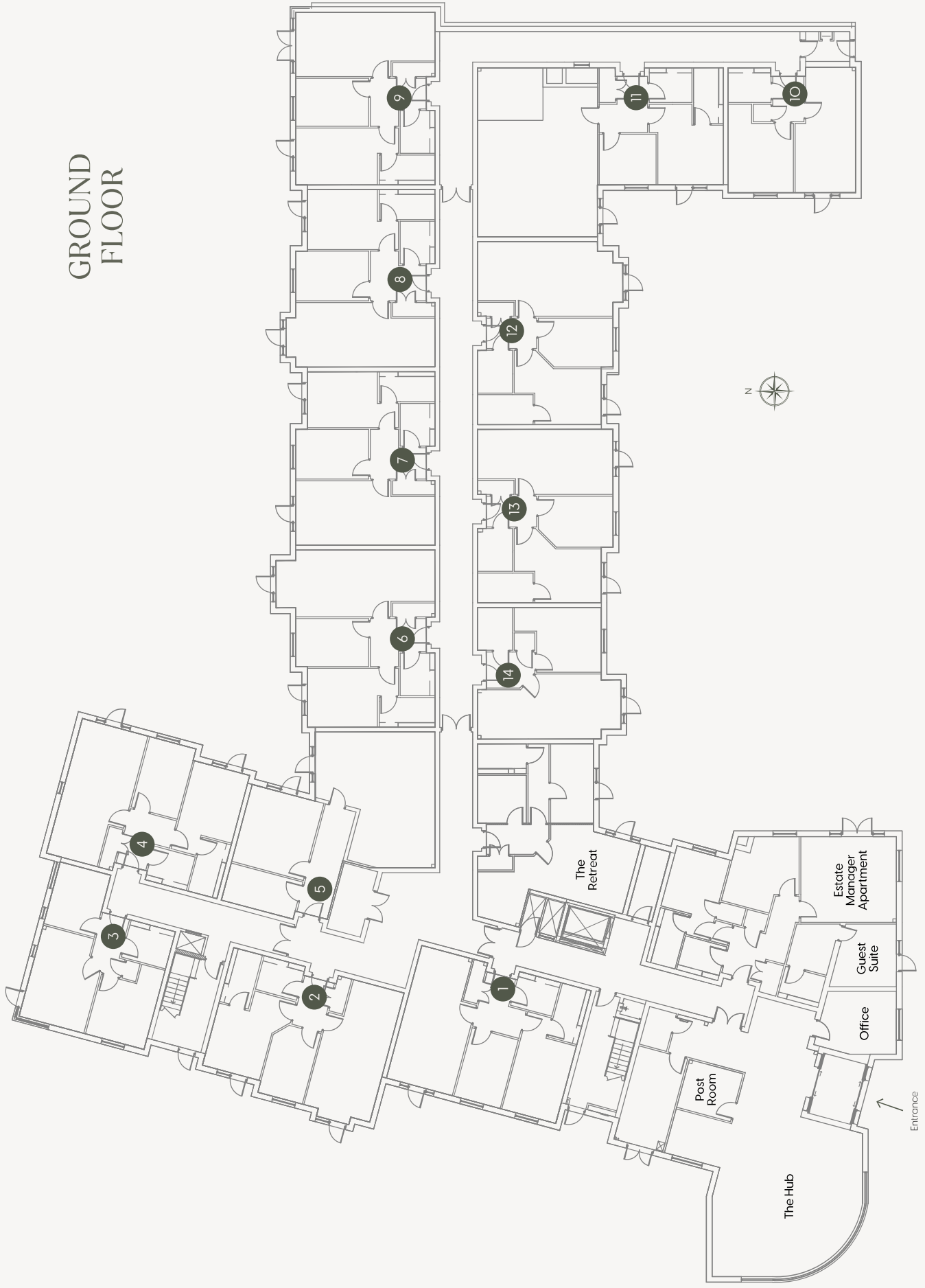
## INTERIOR FINISH

- Walls and ceilings finished in emulsion paint
- Satin painted architraves and skirting
- Fitted flooring throughout, please check with Sales Advisor for flooring specification
- Solid core apartment entry door
- High quality stainless-steel ironmongery to entry doors
- Interior doors with stainless steel ironmongery

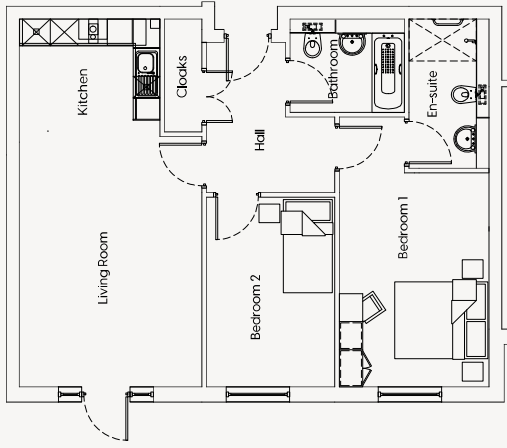
## DESIGN & SPECIFICATION

All fixtures, fittings and materials throughout The Rivus are elegant and simple. Lines, clean and stylish. Rooms exude warmth and character. Inspired by Scandinavian design, they harness pale colours, elegant wood and classic stone features to emphasise light, functionality and space for a sense of inner contentment.

GROUND FLOOR

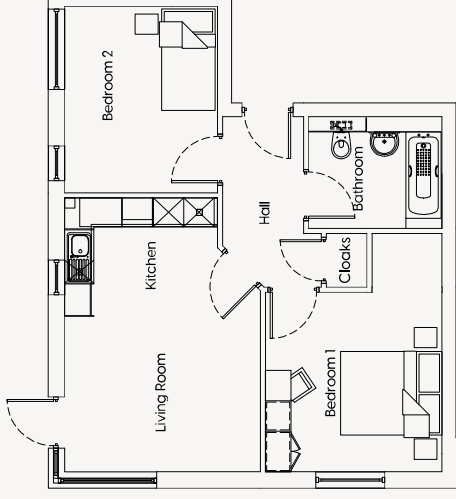


## APARTMENT ONE



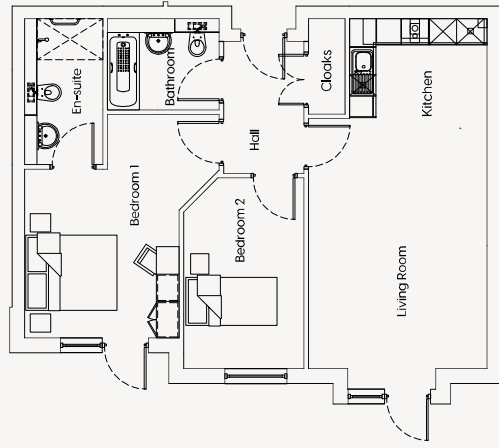
Kitchen/Living	25' 11" x 12' 10"
Bedroom 1	19' 0" x 10' 6"
En-suite	10' 6" x 5' 8"
Bedroom 2	13' 4" x 9' 0"
Bathroom	6' 7" x 8' 0"

## APARTMENT THREE



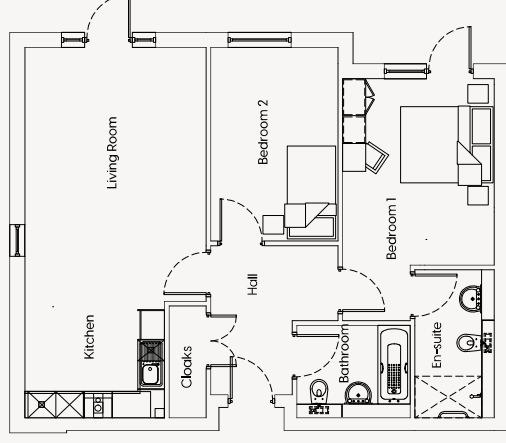
Kitchen/Living	17' 9" x 12' 8"
Bedroom 1	11' 7" x 11' 5"
Bedroom 2	12' 1" x 9' 11"
Bathroom	7' 3" x 8' 8"

## APARTMENT TWO



Kitchen/Living	25' 2" x 12' 10"
Bedroom 1	16' 1" x 11' 1"
En-suite	10' 6" x 5' 8"
Bedroom 2	13' 9" x 8' 8"
Bathroom	6' 7" x 8' 0"

## APARTMENT FOUR

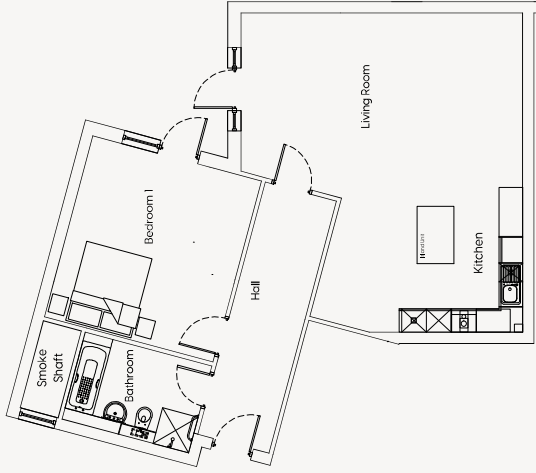


Kitchen/Living	26' 3" x 12' 10"
Bedroom 1	17' 2" x 10' 9"
En-suite	10' 6" x 5' 8"
Bedroom 2	13' 9" x 9' 0"
Bathroom	6' 7" x 8' 0"

All floor plans and dimensions are approximate and indicative only. Each layout and size may vary. Each plan may be at a different scale to the others within this brochure.

All floor plans and dimensions are approximate and indicative only. Each layout and size may vary. Each plan may be at a different scale to the others within this brochure.

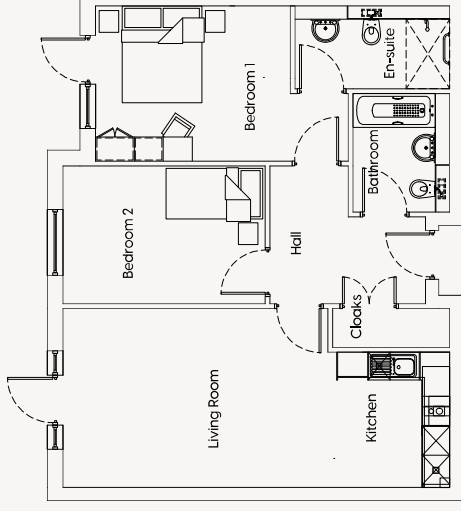
## APARTMENT FIVE



<b>Kitchen/Living</b>	7800mm x 6878mm
<b>Bedroom 1</b>	4578mm x 4263mm
<b>Bathroom</b>	2200mm x 3200mm

25' 7" x 22' 7"
15' 0" x 14' 0"
7' 3" x 10' 6"

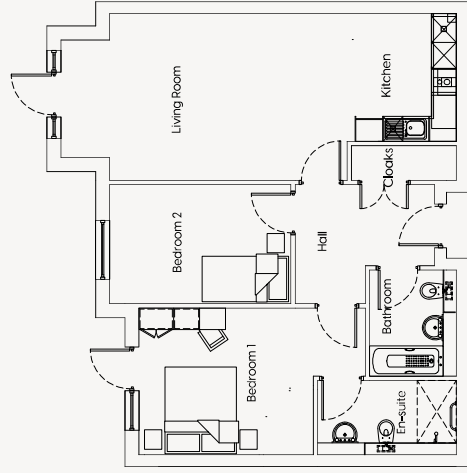
## APARTMENT SEVEN



<b>Kitchen/Living</b>	3700mm x 8003mm
<b>Bedroom 1</b>	3210mm x 5228mm
<b>En-suite</b>	1715mm x 3200mm
<b>Bedroom 2</b>	2853mm x 4183mm
<b>Bathroom</b>	2450mm x 2000mm

12' 2" x 26' 3"
10' 6" x 17' 2"
5' 8" x 10' 6"
9' 4" x 13' 9"
8' 0" x 6' 7"

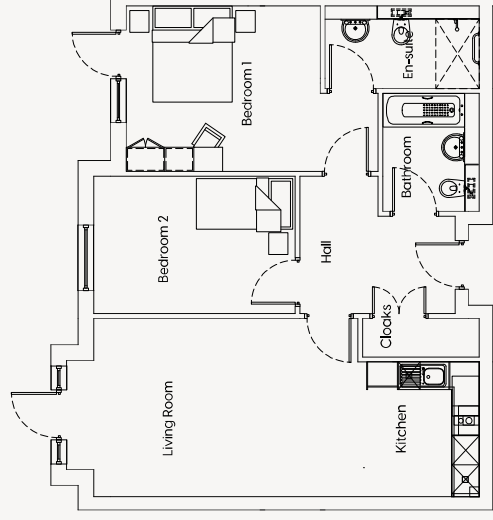
## APARTMENT SIX



<b>Kitchen/Living</b>	3850mm x 9128mm
<b>Bedroom 1</b>	3388mm x 5228mm
<b>En-suite</b>	1715mm x 3200mm
<b>Bedroom 2</b>	2750mm x 4183mm
<b>Bathroom</b>	2450mm x 2000mm

12' 8" x 29' 11"
11' 1" x 17' 2"
5' 8" x 10' 6"
9' 0" x 13' 9"
8' 0" x 6' 7"

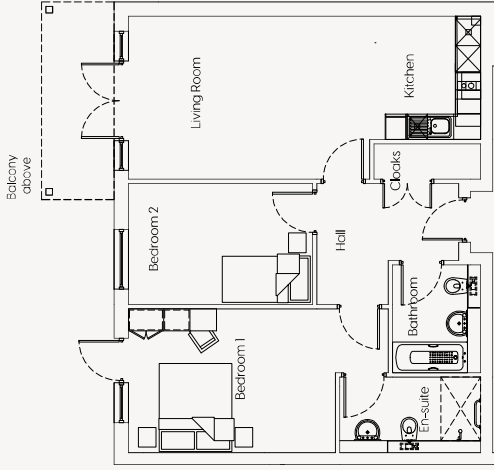
## APARTMENT EIGHT



<b>Kitchen/Living</b>	3700mm x 8565mm
<b>Bedroom 1</b>	3435mm x 5278mm
<b>En-suite</b>	1715mm x 3200mm
<b>Bedroom 2</b>	2853mm x 4183mm
<b>Bathroom</b>	2450mm x 2000mm

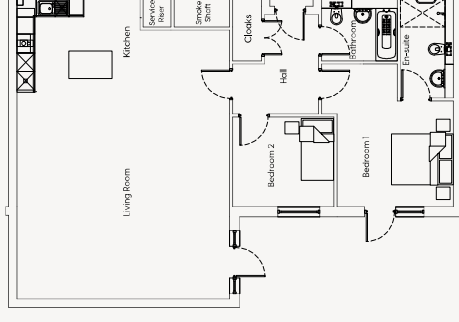
12' 2" x 28' 1"
11' 3" x 17' 4"
5' 8" x 10' 6"
9' 4" x 13' 9"
8' 0" x 6' 7"

## APARTMENT NINE



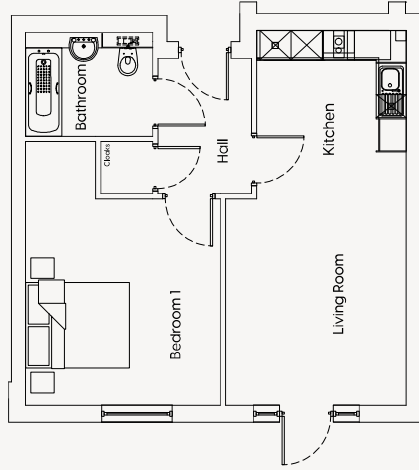
<b>Kitchen/Living</b>	12' 2" x 26' 3"
<b>Bedroom 1</b>	10' 9" x 19' 4"
<b>En-suite</b>	5' 8" x 10' 6"
<b>Bedroom 2</b>	9' 0" x 13' 9"
<b>Bathroom</b>	8' 0" x 6' 7"

## APARTMENT ELEVEN



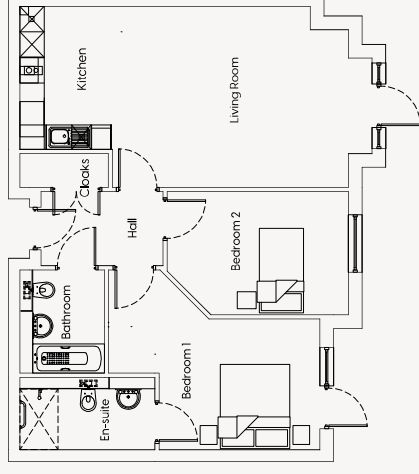
<b>Kitchen/Living</b>	31' 10" x 22' 7"
<b>Bedroom 1</b>	15' 2" x 12' 4"
<b>En-suite</b>	10' 6" x 5' 8"
<b>Bedroom 2</b>	9' 6" x 10' 9"
<b>Bathroom</b>	6' 7" x 8' 0"

## APARTMENT TEN



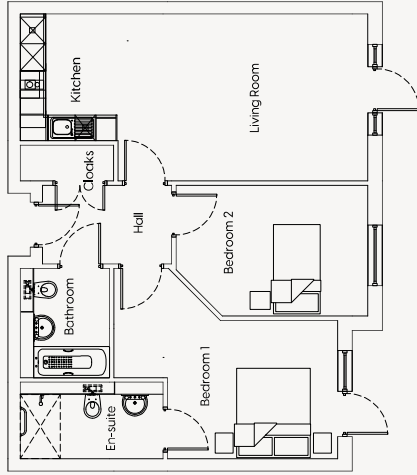
<b>Kitchen/Living</b>	23' 8" x 11' 5"
<b>Bedroom 1</b>	16' 8" x 12' 4"
<b>Bathroom</b>	6' 7" x 8' 0"

## APARTMENT TWELVE



<b>Kitchen/Living</b>	14' 1" x 27' 5"
<b>Bedroom 1</b>	10' 2" x 16' 5"
<b>En-suite</b>	5' 8" x 10' 6"
<b>Bedroom 2</b>	9' 7" x 14' 1"
<b>Bathroom</b>	8' 0" x 6' 7"

# APARTMENT THIRTEEN



**Kitchen/Living**  
7788mm x 3738mm

**Bedroom 1**  
5013mm x 3098mm

**En-suite**  
3200mm x 1715mm

**Bedroom 2**  
4295mm x 2928mm

**Bathroom**  
2000mm x 2450mm

25' 7" x 12' 3"

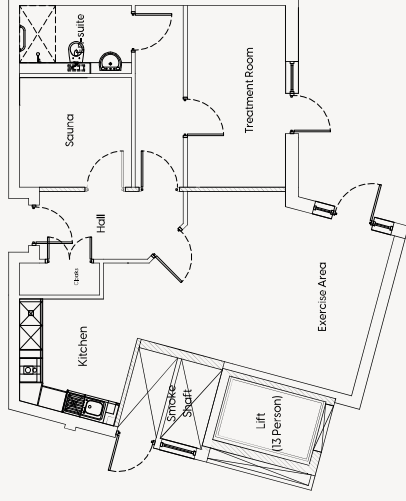
16' 5" x 10' 2"

10' 6" x 5' 8"

14' 1" x 9' 7"

6' 7" x 8' 0"

# THE RETREAT



**Exercise/Kitchen**  
8666mm x 6093mm

**Sauna**  
2750mm x 2800mm

**En-suite**  
1700mm x 2800mm

**Treatment Room**  
4550mm x 2463mm

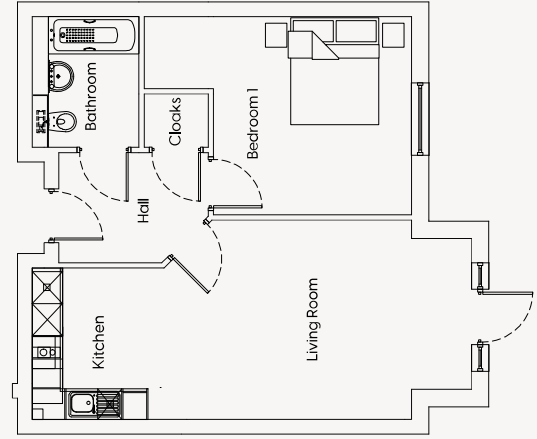
28' 5" x 20' 0"

9' 0" x 9' 2"

5' 7" x 9' 2"

14' 11" x 8' 1"

# APARTMENT FOURTEEN



**Kitchen/Living**  
3738mm x 8238mm

**Bedroom 1**  
3715mm x 3713mm

**Bathroom**  
2457mm x 2001mm

12' 3" x 27' 0"

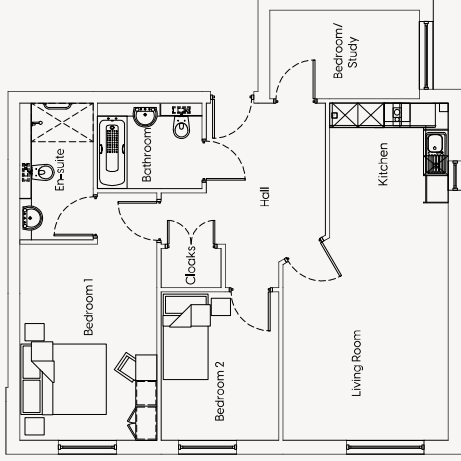
12' 2" x 12' 2"

8' 1" x 6' 7"

FIRST FLOOR



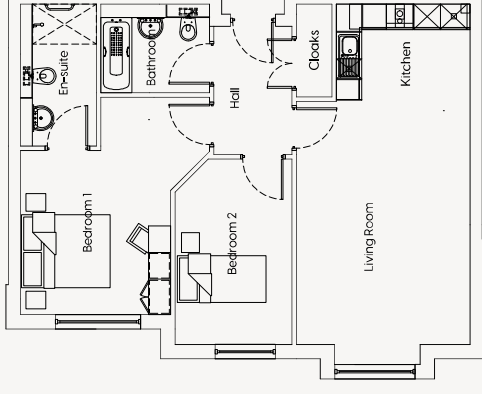
## APARTMENT SEVENTEEN



Kitchen/Living	25' 11" x 12' 8"
Bedroom 1	15' 1" x 10' 6"
En-suite	10' 6" x 5' 8"
Bedroom/Study	6' 10" x 11' 6"
Bedroom 2	11' 5" x 9' 0"
Bathroom	6' 7" x 8' 0"

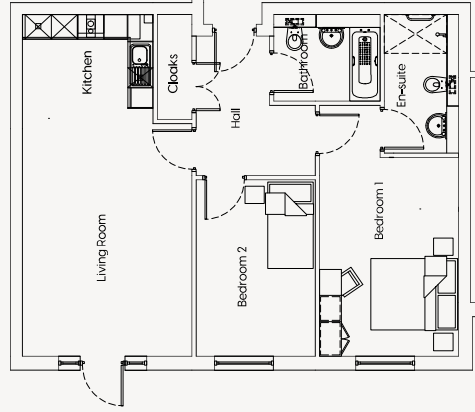
Kitchen/Living	26' 8" x 12' 8"
Bedroom 1	16' 1" x 14' 0"
En-suite	10' 6" x 5' 8"
Bedroom 2	13' 9" x 8' 8"
Bathroom	6' 7" x 8' 0"

## APARTMENT NINETEEN



Kitchen/Living	8125mm x 3865mm
Bedroom 1	4900mm x 4265mm
En-suite	3200mm x 1715mm
Bedroom 2	4183mm x 2638mm
Bathroom	2000mm x 2450mm

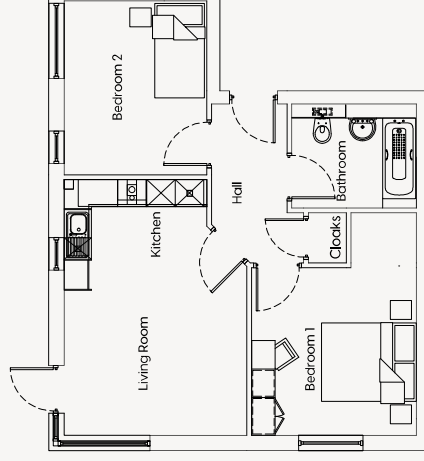
## APARTMENT EIGHTEEN



Kitchen/Living	25' 11" x 12' 10"
Bedroom 1	19' 0" x 10' 6"
En-suite	10' 6" x 5' 8"
Bedroom 2	13' 4" x 9' 0"
Bathroom	6' 7" x 8' 0"

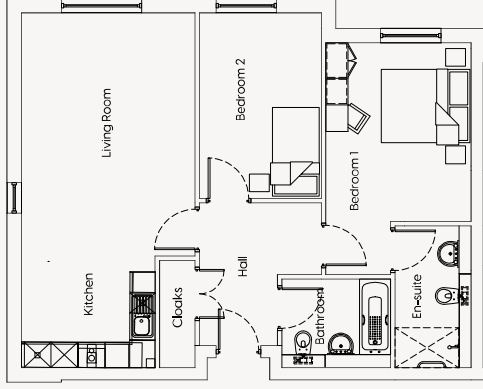
Kitchen/Living	17' 9" x 12' 8"
Bedroom 1	11' 7" x 11' 5"
Bedroom 2	12' 1" x 9' 11"
Bathroom	7' 3" x 8' 8"

## APARTMENT TWENTY



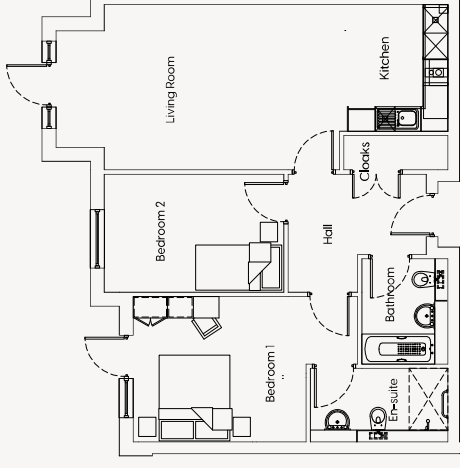
Kitchen/Living	5400mm x 3860mm
Bedroom 1	3540mm x 3480mm
Bedroom 2	3675mm x 3015mm
Bathroom	2200mm x 2630mm

## APARTMENT TWENTY-ONE



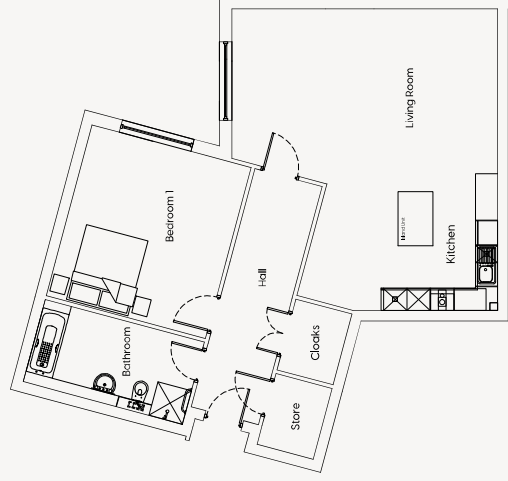
Kitchen/Living	26' 3" x 12' 10"
Bedroom 1	17' 2" x 10' 9"
En-suite	10' 6" x 5' 8"
Bedroom 2	13' 9" x 9' 0"
Bathroom	6' 7" x 8' 0"
Store	

## APARTMENT TWENTY-THREE



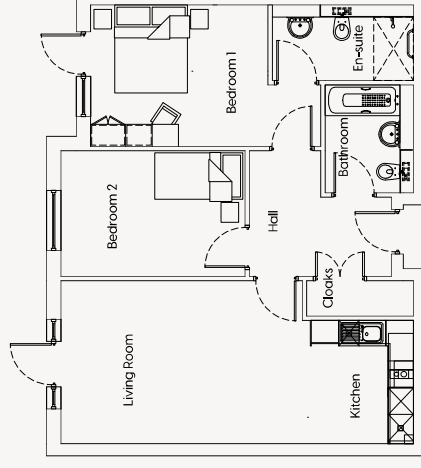
Kitchen/Living	12' 8" x 29' 11"
Bedroom 1	11' 1" x 17' 2"
En-suite	5' 8" x 10' 6"
Bedroom 2	9' 0" x 13' 9"
Bathroom	8' 0" x 6' 7"
Store	

## APARTMENT TWENTY-TWO



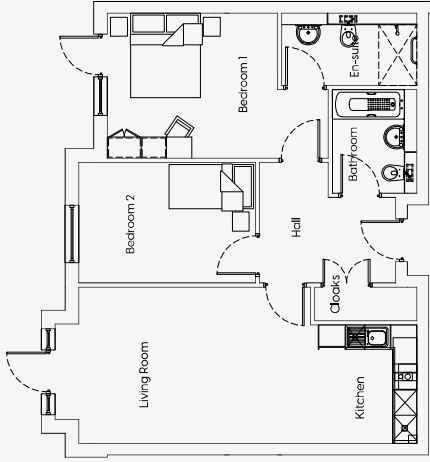
Kitchen/Living	25' 7" x 22' 7"
Bedroom 1	15' 0" x 14' 0"
Store	6' 3" x 4' 11"
Bathroom	7' 3" x 14' 0"
En-suite	

## APARTMENT TWENTY-FOUR



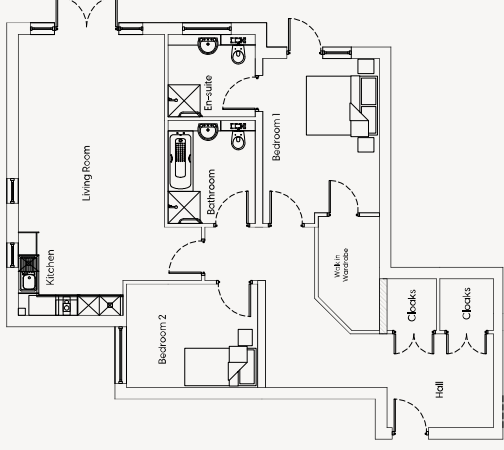
Kitchen/Living	12' 2" x 26' 3"
Bedroom 1	10' 6" x 17' 2"
En-suite	5' 8" x 10' 6"
Bedroom 2	9' 4" x 13' 9"
Bathroom	8' 0" x 6' 7"
Store	

## APARTMENT TWENTY-FIVE



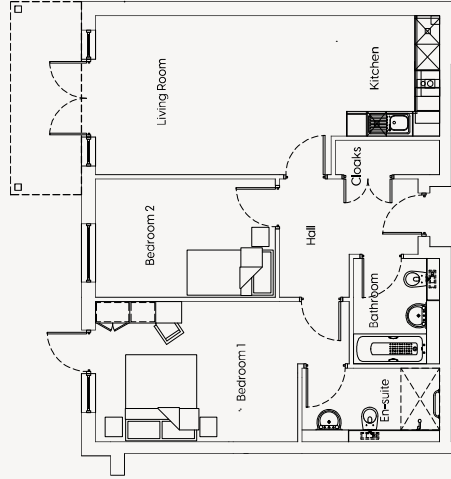
<b>Kitchen/Living</b>	3700mm x 8565mm	12' 2" x 28' 1"
<b>Bedroom 1</b>	3435mm x 5228mm	11' 3" x 17' 2"
<b>En-suite</b>	1715mm x 3200mm	5' 8" x 10' 6"
<b>Bedroom 2</b>	2853mm x 4183mm	9' 4" x 13' 9"
<b>Bathroom</b>	2450mm x 2000mm	8' 0" x 6' 7"

## APARTMENT TWENTY-SEVEN



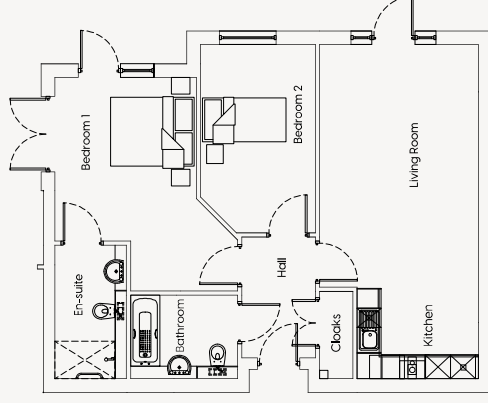
<b>Kitchen/Living</b>	7890mm x 5143mm	25' 11" x 16' 10"
<b>Bedroom 1</b>	4636mm x 3273mm	15' 3" x 10' 9"
<b>En-suite</b>	2310mm x 2445mm	7' 7" x 8' 0"
<b>Bedroom 2</b>	2901mm x 3688mm	9' 6" x 12' 1"
<b>Bathroom</b>	2901mm x 2445mm	9' 6" x 8' 0"

## APARTMENT TWENTY-SIX



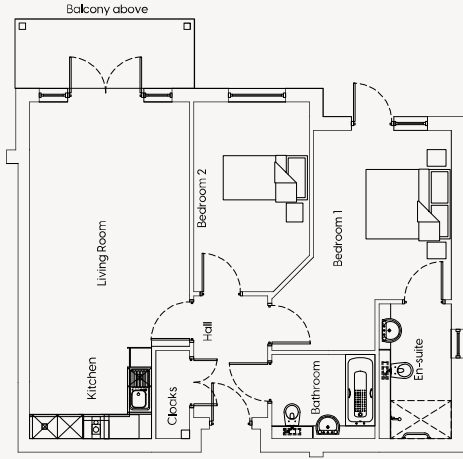
<b>Kitchen/Living</b>	3700mm x 8003mm	12' 2" x 26' 3"
<b>Bedroom 1</b>	3265mm x 5903mm	10' 9" x 19' 4"
<b>En-suite</b>	1715mm x 3200mm	5' 8" x 10' 6"
<b>Bedroom 2</b>	2750mm x 4183mm	9' 0" x 13' 9"
<b>Bathroom</b>	2450mm x 2000mm	8' 0" x 6' 7"

## APARTMENT TWENTY-EIGHT



<b>Kitchen/Living</b>	8003mm x 3803mm	26' 3" x 12' 6"
<b>Bedroom 1</b>	5115mm x 4378mm	16' 9" x 14' 4"
<b>En-suite</b>	3200mm x 1715mm	10' 6" x 5' 8"
<b>Bedroom 2</b>	4510mm x 2750mm	14' 10" x 9' 0"
<b>Bathroom</b>	2000mm x 2563mm	6' 7" x 8' 5"

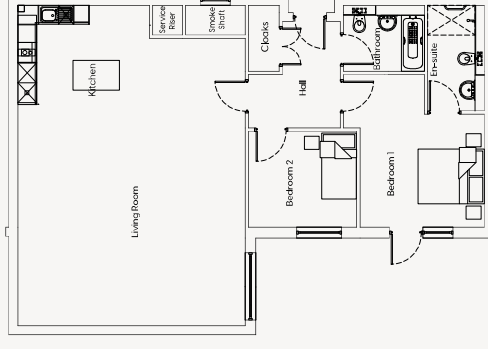
## APARTMENT TWENTY-NINE



Kitchen/Living	8003mm x 3803mm
Bedroom 1	5228mm x 4265mm
En-suite	3200mm x 1715mm
Bedroom 2	4510mm x 2750mm
Bathroom	2000mm x 2440mm

26' 3" x 12' 6"
17' 2" x 14' 0"
10' 6" x 5' 8"
14' 10" x 9' 0"
6' 7" x 8' 0"

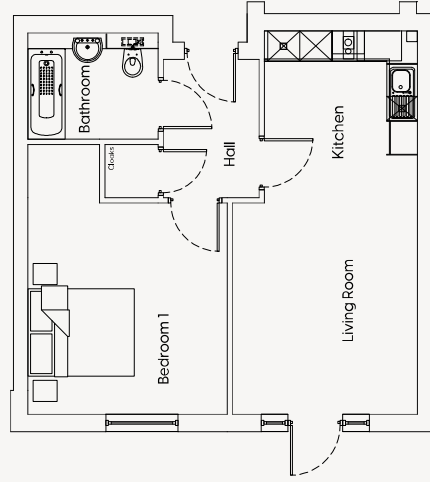
## APARTMENT THIRTY-ONE



Kitchen/Living	9713mm x 6888mm
Bedroom 1	4627mm x 4265mm
En-suite	3200mm x 1715mm
Bedroom 2	2908mm x 3283mm
Bathroom	2001mm x 2450mm

31' 10" x 22' 7"
15' 2" x 14' 0"
10' 6" x 5' 8"
9' 6" x 10' 9"
6' 7" x 8' 0"

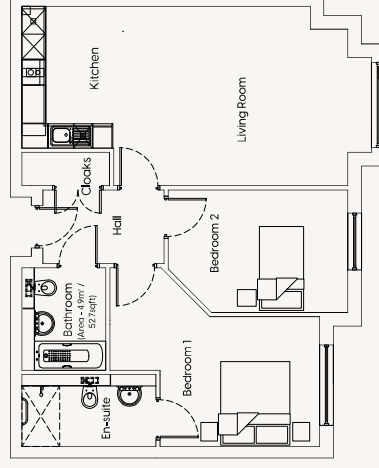
## APARTMENT THIRTY



Kitchen/Living	7216mm x 3478mm
Bedroom 1	5076mm x 3750mm
Bathroom	2001mm x 2450mm

23' 8" x 11' 5"
16' 8" x 12' 4"
6' 7" x 8' 0"

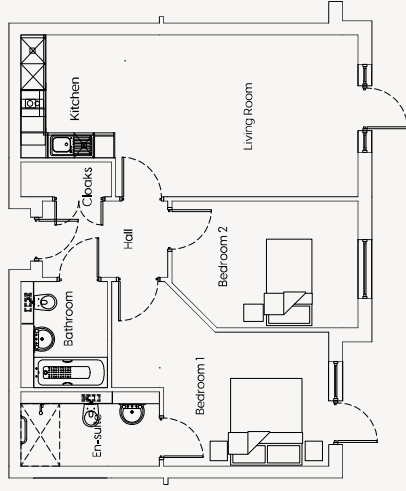
## APARTMENT THIRTY-TWO



Kitchen/Living	4288mm x 8350mm
Bedroom 1	4265mm x 5013mm
En-suite	1715mm x 3200mm
Bedroom 2	2928mm x 4295mm
Bathroom	2450mm x 2000mm

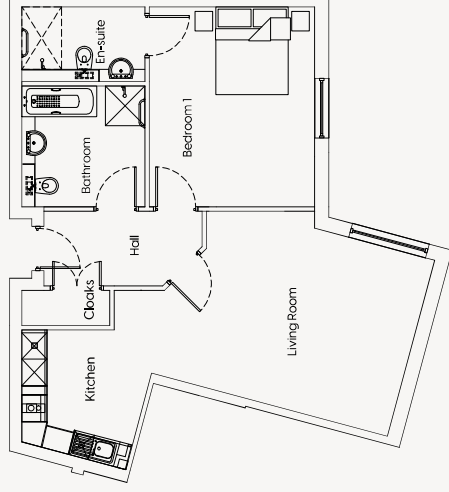
14' 1" x 27' 5"
14' 0" x 16' 5"
5' 8" x 10' 6"
9' 7" x 14' 1"
8' 0" x 6' 7"

## APARTMENT THIRTY-THREE



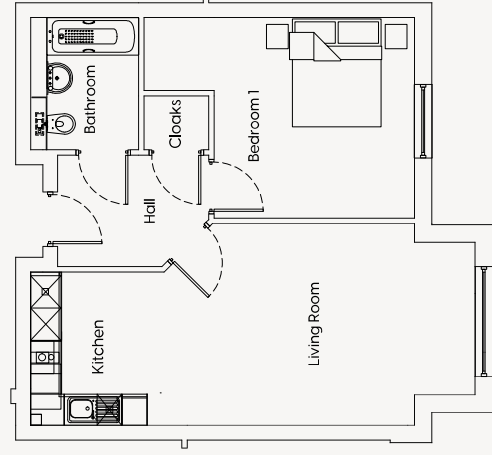
<b>Kitchen/Living</b>	12' 3" x 25' 7"
<b>Bedroom 1</b>	14' 0" x 16' 5"
<b>En-suite</b>	5' 8" x 10' 6"
<b>Bedroom 2</b>	9' 7" x 14' 1"
<b>Bathroom</b>	8' 0" x 6' 6"
<b>Bedroom 1</b>	4265mm x 5013mm
<b>En-suite</b>	1715mm x 3200mm
<b>Bedroom 2</b>	2928mm x 4295mm
<b>Bathroom</b>	2450mm x 1991mm

## APARTMENT THIRTY-FIVE



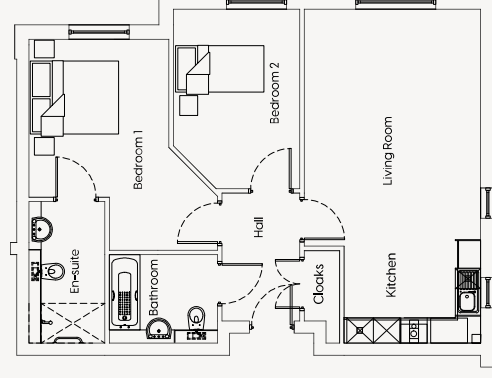
<b>Kitchen/Living</b>	29' 5" x 21' 11"
<b>Bedroom 1</b>	14' 11" x 12' 4"
<b>En-suite</b>	5' 7" x 9' 2"
<b>Bathroom</b>	9' 0" x 9' 2"
<b>Bedroom 1</b>	4550mm x 3763mm
<b>En-suite</b>	1700mm x 2800mm
<b>Bathroom</b>	2750mm x 2800mm

## APARTMENT THIRTY-FOUR



<b>Kitchen/Living</b>	12' 3" x 27' 0"
<b>Bedroom 1</b>	12' 2" x 12' 2"
<b>Bathroom</b>	8' 0" x 6' 7"
<b>Kitchen/Living</b>	3738mm x 8238mm
<b>Bedroom 1</b>	3715mm x 3713mm
<b>Bathroom</b>	2450mm x 2000mm

## APARTMENT THIRTY-SIX



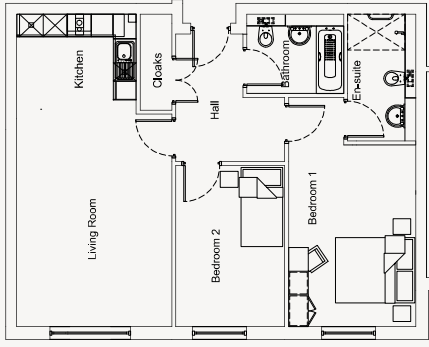
<b>Kitchen/Living</b>	24' 8" x 13' 1"
<b>Bedroom 1</b>	15' 8" x 14' 0"
<b>En-suite</b>	10' 6" x 5' 8"
<b>Bedroom 2</b>	13' 4" x 9' 5"
<b>Bathroom</b>	6' 7" x 8' 0"
<b>Kitchen/Living</b>	7523mm x 3992mm
<b>Bedroom 1</b>	4772mm x 4265mm
<b>En-suite</b>	3200mm x 1715mm
<b>Bedroom 2</b>	4060mm x 2863mm
<b>Bathroom</b>	2000mm x 2450mm



SECOND FLOOR

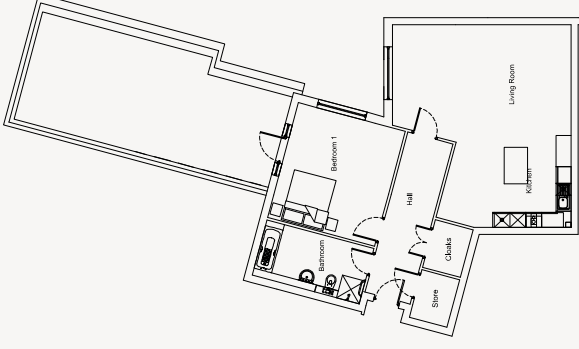


## APARTMENT THIRTY-SEVEN



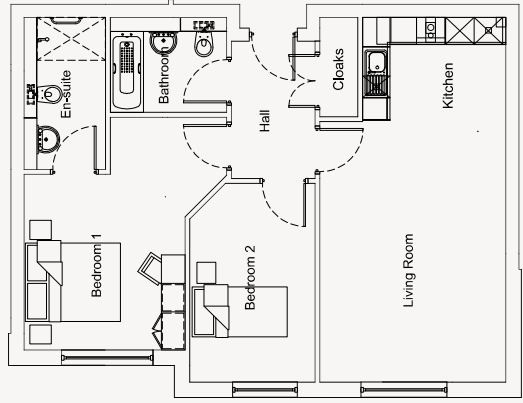
Kitchen/Living	25' 11" x 12' 10"
Bedroom 1	19' 0" x 10' 6"
En-suite	10' 6" x 5' 8"
Bedroom 2	13' 4" x 9' 0"
Bathroom	6' 7" x 8' 0"

## APARTMENT THIRTY-NINE



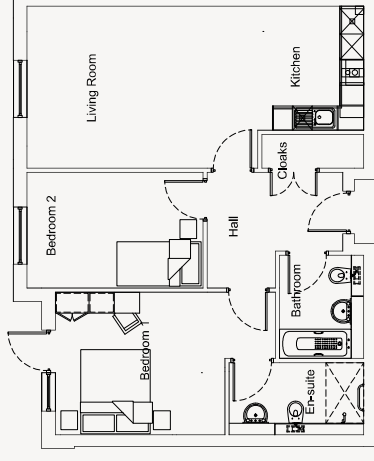
Kitchen/Living	25' 7" x 22' 7"
Bedroom 1	15' 0" x 14' 0"
Store	6' 3" x 4' 11"
Bathroom	7' 3" x 14' 0"

## APARTMENT THIRTY-EIGHT



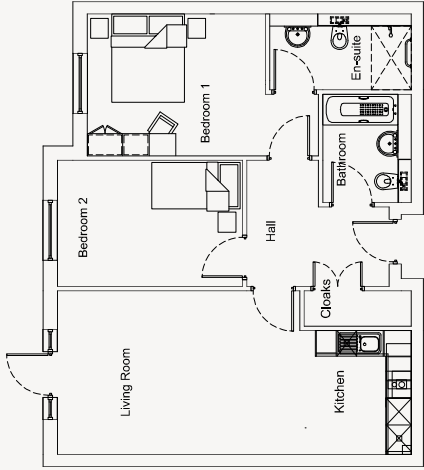
Kitchen/Living	25' 2" x 12' 10"
Bedroom 1	16' 1" x 14' 0"
En-suite	10' 6" x 5' 8"
Bedroom 2	13' 9" x 8' 8"
Bathroom	6' 7" x 8' 0"

## APARTMENT FORTY



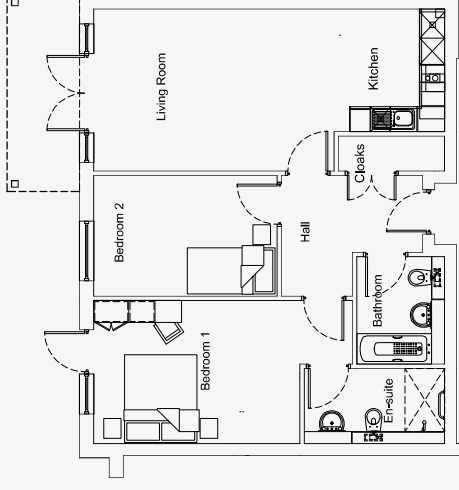
Kitchen/Living	12' 8" x 26' 3"
Bedroom 1	11' 1" x 17' 2"
En-suite	5' 8" x 10' 6"
Bedroom 2	9' 0" x 13' 9"
Bathroom	8' 0" x 6' 7"

## APARTMENT FORTY-ONE



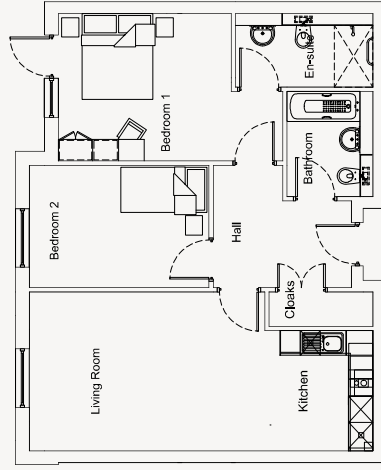
Kitchen/Living	12' 2" x 26' 3"
Bedroom 1	10' 6" x 17' 2"
En-suite	5' 8" x 10' 6"
Bedroom 2	9' 4" x 13' 9"
Bathroom	8' 0" x 6' 7"

## APARTMENT FORTY-THREE



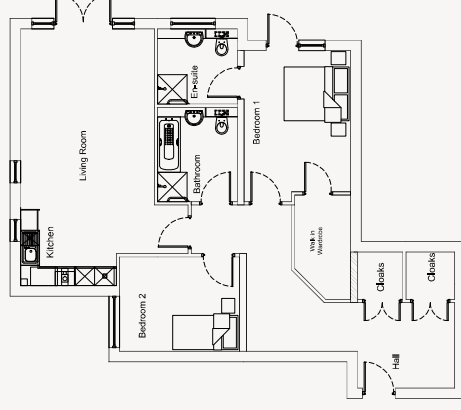
Kitchen/Living	12' 2" x 26' 3"
Bedroom 1	10' 9" x 19' 4"
En-suite	5' 8" x 10' 6"
Bedroom 2	9' 0" x 13' 9"
Bathroom	8' 0" x 6' 7"

## APARTMENT FORTY-TWO



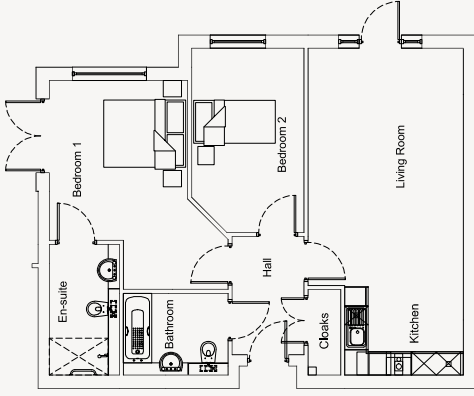
Kitchen/Living	12' 2" x 26' 3"
Bedroom 1	11' 3" x 17' 2"
En-suite	5' 8" x 10' 6"
Bedroom 2	9' 4" x 13' 9"
Bathroom	8' 0" x 6' 7"

## APARTMENT FORTY-FOUR



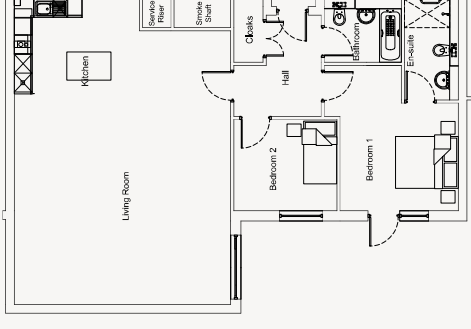
Kitchen/Living	25' 11" x 16' 10"
Bedroom 1	15' 2" x 10' 9"
En-suite	7' 7" x 8' 0"
Bedroom 2	9' 6" x 12' 1"
Bathroom	9' 6" x 8' 0"

## APARTMENT FORTY-FIVE



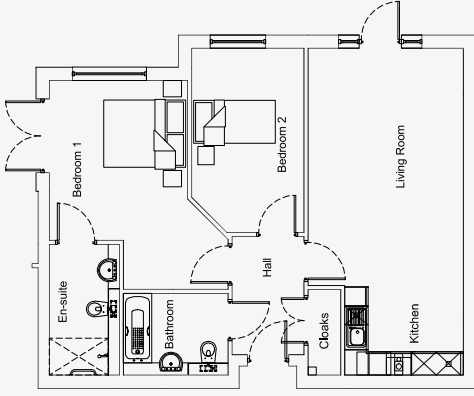
Kitchen/Living	8003mm x 3803mm	26' 3" x 12' 6"
Bedroom 1	4378mm x 5115mm	14' 4" x 16' 9"
En-suite	3200mm x 1715mm	10' 6" x 5' 8"
Bedroom 2	4510mm x 2750mm	14' 10" x 9' 0"
Bathroom	2000mm x 2563mm	6' 7" x 8' 5"

## APARTMENT FORTY-SEVEN



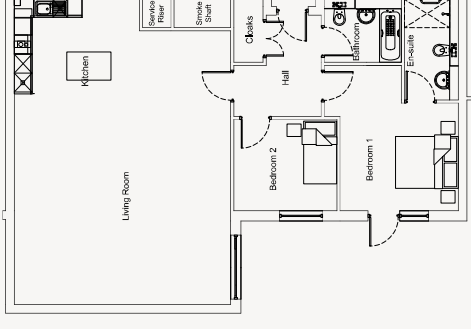
Kitchen/Living	9713mm x 6888mm	31' 10" x 22' 7"
Bedroom 1	4626mm x 3765mm	15' 2" x 12' 4"
En-suite	3200mm x 1715mm	10' 6" x 5' 8"
Bedroom 2	2908mm x 3283mm	9' 6" x 10' 9"
Bathroom	2001mm x 2450mm	6' 7" x 8' 0"

## APARTMENT FORTY-FIVE



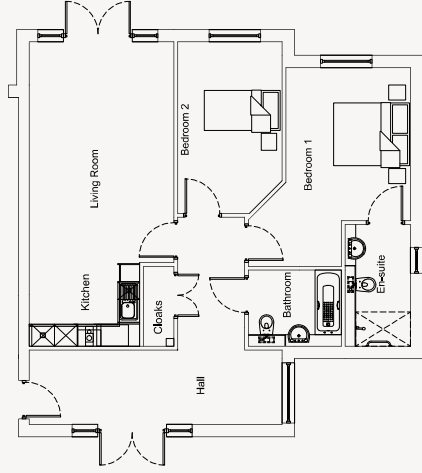
Kitchen/Living	8003mm x 3803mm	26' 3" x 12' 6"
Bedroom 1	4378mm x 5115mm	14' 4" x 16' 9"
En-suite	3200mm x 1715mm	10' 6" x 5' 8"
Bedroom 2	4510mm x 2750mm	14' 10" x 9' 0"
Bathroom	2000mm x 2563mm	6' 7" x 8' 5"

## APARTMENT FORTY-SEVEN



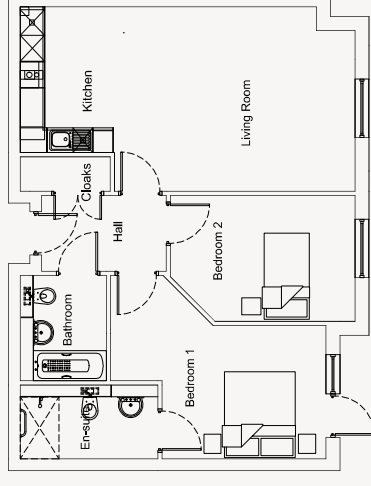
Kitchen/Living	9713mm x 6888mm	31' 10" x 22' 7"
Bedroom 1	4626mm x 3765mm	15' 2" x 12' 4"
En-suite	3200mm x 1715mm	10' 6" x 5' 8"
Bedroom 2	2908mm x 3283mm	9' 6" x 10' 9"
Bathroom	2001mm x 2450mm	6' 7" x 8' 0"

## APARTMENT FORTY-SIX



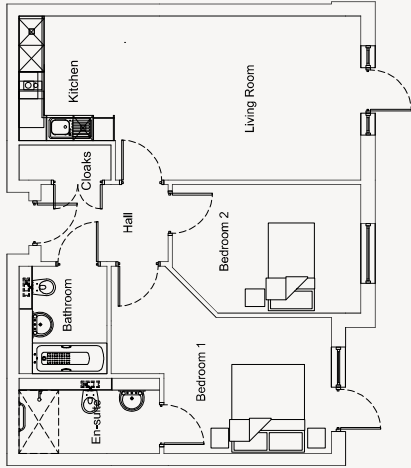
Kitchen/Living	8003mm x 3803mm	26' 3" x 12' 6"
Bedroom 1	5228mm x 4265mm	17' 2" x 14' 0"
En-suite	3200mm x 1715mm	10' 6" x 5' 8"
Bedroom 2	4510mm x 2750mm	14' 10" x 9' 0"
Bathroom	2000mm x 2450mm	6' 7" x 8' 0"

## APARTMENT FORTY-EIGHT



Kitchen/Living	4288mm x 7788mm	14' 1" x 25' 7"
Bedroom 1	4265mm x 5013mm	14' 0" x 16' 5"
En-suite	1715mm x 3200mm	5' 8" x 10' 6"
Bedroom 2	2928mm x 4295mm	9' 7" x 14' 1"
Bathroom	2450mm x 2000mm	8' 0" x 6' 7"

## APARTMENT FORTY-NINE



**Kitchen/Living**  
3738mm x 7788mm

**Bedroom 1**  
4265mm x 5013mm

**En-suite**  
1715mm x 3200mm

**Bedroom 2**  
2928mm x 4295mm

**Bathroom**  
2450mm x 2000mm

12' 3" x 25' 7"

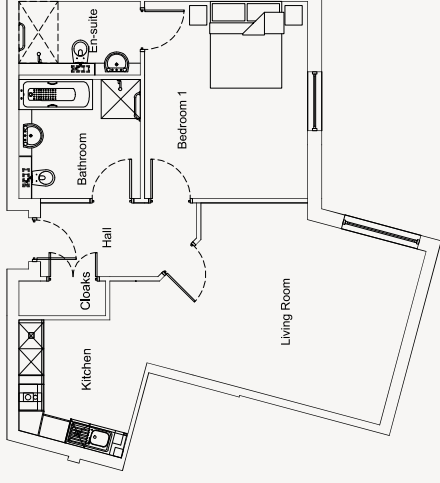
14' 0" x 16' 5"

5' 8" x 10' 6"

9' 7" x 14' 1"

8' 0" x 6' 7"

## APARTMENT FIFTY-ONE



**Kitchen/Living**  
3738mm x 7788mm

**Bedroom 1**  
4265mm x 5013mm

**En-suite**  
1715mm x 3200mm

**Bedroom 2**  
2928mm x 4295mm

**Bathroom**  
2450mm x 1991mm

12' 3" x 25' 7"

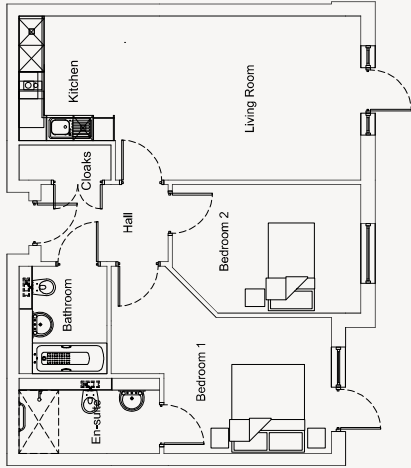
14' 0" x 16' 5"

5' 8" x 10' 6"

9' 7" x 14' 1"

8' 0" x 6' 6"

## APARTMENT FORTY-NINE



**Kitchen/Living**  
3738mm x 7788mm

**Bedroom 1**  
4265mm x 5013mm

**En-suite**  
1715mm x 3200mm

**Bedroom 2**  
2928mm x 4295mm

**Bathroom**  
2450mm x 2000mm

12' 3" x 25' 7"

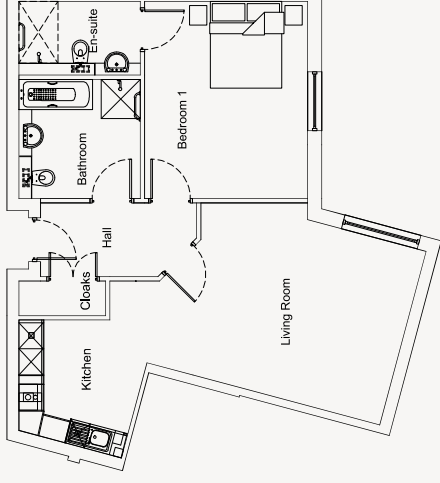
14' 0" x 16' 5"

5' 8" x 10' 6"

9' 7" x 14' 1"

8' 0" x 6' 7"

## APARTMENT FIFTY-ONE



**Kitchen/Living**  
3738mm x 7788mm

**Bedroom 1**  
4265mm x 5013mm

**En-suite**  
1715mm x 3200mm

**Bedroom 2**  
2928mm x 4295mm

**Bathroom**  
2450mm x 1991mm

12' 3" x 25' 7"

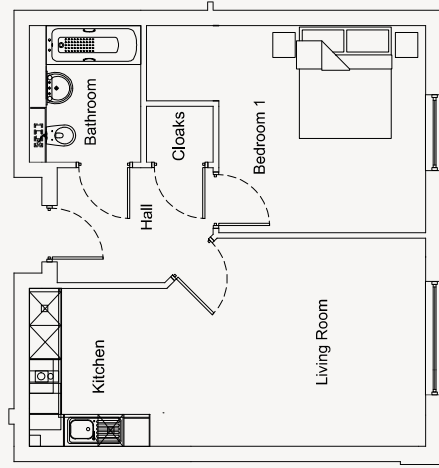
14' 0" x 16' 5"

5' 8" x 10' 6"

9' 7" x 14' 1"

8' 0" x 6' 6"

## APARTMENT FIFTY



**Kitchen/Living**  
3738mm x 7113mm

**Bedroom 1**  
3715mm x 3713mm

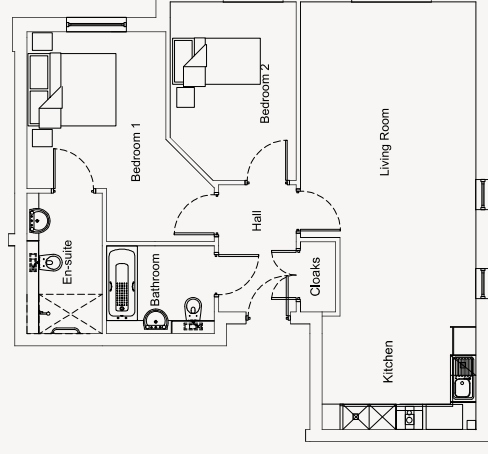
**Bathroom**  
2450mm x 2001mm

12' 3" x 23' 4"

12' 2" x 12' 2"

8' 0" x 6' 7"

## APARTMENT FIFTY-TWO



**Kitchen/Living**  
3738mm x 8238mm

**Bedroom 1**  
3715mm x 3713mm

**Bathroom**  
2450mm x 2000mm

12' 3" x 27' 0"

12' 2" x 12' 2"

8' 0" x 6' 7"



## THE DELIGHT OF INDEPENDENT LIVING

Discover a new way of living with a home designed exclusively for the over 55s with the ability to adapt to your ever changing needs for added peace of mind. Live comfortably without compromising on quality.

This community delivers excellent security and carefree, independent living amongst like-minded individuals.



Cognatum Estates is an independent not-for-profit company limited by guarantee and is a member of the Association of Retirement Housing Managers (ARHM). The properties ensure space and privacy, while the estate setting means that good company is right on your doorstep, if you desire.

Set apart from our competitors by our extensive prime locations, handsome buildings, beautifully landscaped grounds and the personal attention of our Estate

Managers, our purpose is to enable downsizers to enjoy a stylish, secure and independent lifestyle throughout retirement.

[www.cognatum.co.uk](http://www.cognatum.co.uk)  
01491 821150

  
Cognatum



The Rivus, Grove Road, Wantage, Oxfordshire, OX12 7GR  
sales@therivuswantage.co.uk  
www.therivuswantage.co.uk



01491 821170  
property@cognatum.co.uk  
www.cognatum.co.uk

The information within this document is indicative and is intended to act as a guide only to the finished product. These particulars should not be relied upon as statements of fact or representation and applicants must satisfy themselves by inspection or otherwise to their correctness. The dimensions given on plans are subject to variation and are not intended to be used for carpet sizes, appliance sizes or items of furniture.

Designed by Antler

Cognatum

