



ASHLEY ROAD  
WALTON ON THAMES

JACKSON-STOPS 

## ASHLEY ROAD WALTON ON THAMES, KT12

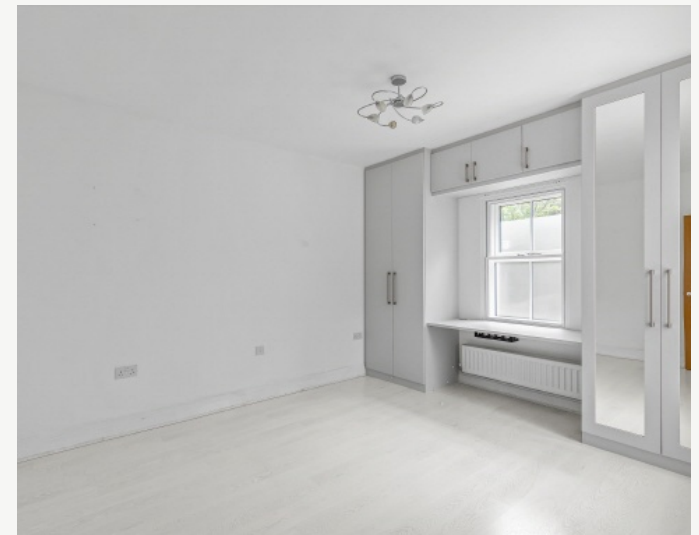
ASKING PRICE: £700,000

Offered with no onward chain stands this link detached charming house which features a reversed traditional layout, three bedrooms, two bathrooms, modern kitchen and a large living room opening onto an expansive private terrace, as well as patio and ample covered parking, solar panels for hot water and proximity to outstanding schools, like Cleves, Oatlands and Ashley Park.

Located under half a mile from Walton-on-Thames station, 1.5 miles from town centre shops and dining, with excellent schools and recreational facilities like David Lloyd and St George's Hill Tennis Club.

### KEY FEATURES

- Three Bedrooms
- Two Bathrooms
- Double Car Port
- Roof Terrace
- Close To Station
- No Onward Chain







Total area (approx.): 129.6 sq. m (1395 sq. ft)  
 Total balcony area (approx.): 43.6 sq. m (469 sq. ft)

Energy Rating: C. We aim to make our particulars both accurate and reliable. However they are not guaranteed; nor do they form part of an offer or contract. If you require clarification on any points then please contact us, especially if you are travelling some distance to view. Please note that appliances and heating systems have not been tested and therefore no warranties can be given as to their good working order.

**ASKING PRICE: £700,000**

**WEYBRIDGE**

**01932 821 160**

weybridge@jackson-stops.co.uk

jackson-stops.co.uk

**JACKSON-STOPS** 