



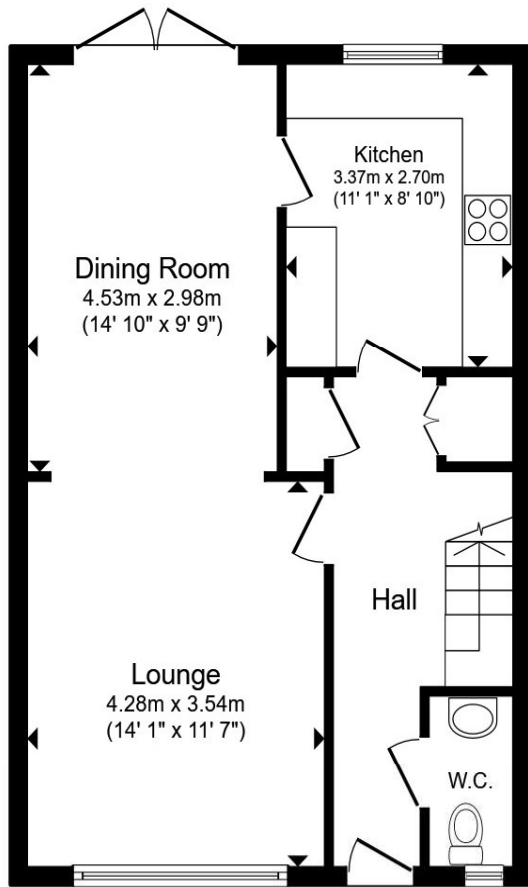
**New Barn Close, Portslade Brighton BN41 2GQ**

**welcome to**

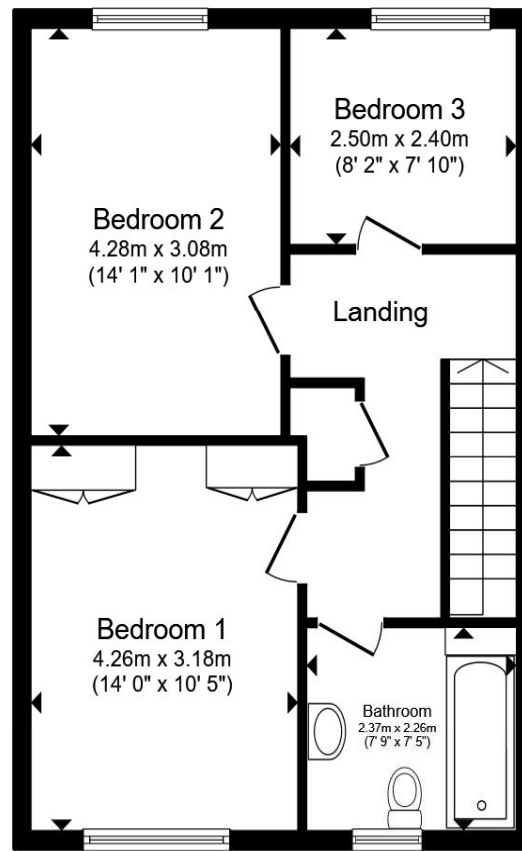
**New Barn Close, Portslade Brighton**

Situated in Portslade, this well-proportioned three-bedroom home offers spacious living over two floors. Featuring a bright lounge, dining room with garden access, fitted kitchen, downstairs W.C., family bathroom and excellent transport links, it is ideal for families or first-time buyers.





**Ground Floor**



**First Floor**

Total floor area 103.0 m<sup>2</sup> (1,109 sq.ft.) approx

This floor plan is for illustrative purposes only. It is not drawn to scale. Any measurements, floor areas (including any total floor area), openings and orientation are approximate. No details are guaranteed, they cannot be relied upon for any purpose and they do not form part of any agreement. No liability is taken for any error, omission or misstatement. A party must rely upon its own inspection(s). Powered by [www.propertybox.io](http://www.propertybox.io)



welcome to

## New Barn Close, Portslade Brighton

- THREE DOUBLE BEDROOMS
- SOUTH FACING SPACIOUS GARDEN
- OPEN PLAN LIVING AND DINING ROOM
- EASY ACCESS TO TRANSPORT LINKS
- CLOSE TO GREEN SPACES

Tenure: Freehold EPC Rating: C  
Council Tax Band: C

**£425,000**



Please note the marker reflects the  
postcode not the actual property

check out more properties at [fox-and-sons.co.uk](https://fox-and-sons.co.uk)



Property Ref:  
CRH110144 - 0002

1. MONEY LAUNDERING REGULATIONS Intending purchasers will be asked to produce identification documentation at a later stage and we would ask for your co-operation in order that there is no delay in agreeing the sale. 2. These particulars do not constitute part or all of an offer or contract. 3. The measurements indicated are supplied for guidance only and as such must be considered incorrect. Potential buyers are advised to recheck measurements before committing to any expense. 4. We have not tested any apparatus, equipment, fixtures or services and it is in the buyers interest to check the working condition of any appliances. 5. Where an EPC, or a Home Report (Scotland only) is held for this property, it is available for inspection at the branch by appointment. If you require a printed version of a Home Report, you will need to pay a reasonable production charge reflecting printing and other costs. 6. We are not able to offer an opinion either written or verbal on the content of these reports and this must be obtained from your legal representative. 7. Whilst we take care in preparing these reports, a buyer should ensure that his/her legal representative confirms as soon as possible all matters relating to title including the extent and boundaries of the property and other important matters before exchange of contracts.



**01273 820280**



[Hove@fox-and-sons.co.uk](mailto:Hove@fox-and-sons.co.uk)



161 Church Road, HOVE, East Sussex, BN3 2AD



[fox-and-sons.co.uk](https://fox-and-sons.co.uk)