



Berrowside Road, Birmingham B34 7LD

welcome to

Berrowside Road, Birmingham

****MODERN SEMI-DETACHED PROPERTY**LOUNGE**KITCHEN DINER**DOWNSTAIRS WC**THREE BEDROOMS**UPSTAIRS BATHROOM**OFF ROAD PARKING**REAR GARDEN****



Agent Note

The Council Tax Band is C.

Entrance Hall

Ceiling light point, radiator, Stairs to first floor and laminate flooring

Study

Double-glazed window to front, ceiling light point, radiator and low level w.c.

Lounge

Double-glazed window to front, two radiators, laminate flooring and ceiling light point.

Kitchen

Two double-glazed windows to rear, radiator, two ceiling light points, cupboards, drawers and base unit, roll top work surface, stainless steel sink and drainer, hob, oven, cooker hood, plumbing for washing machine and dishwasher.

Landing

Loft access, ceiling light point, door to airing cupboard housing central heating boiler.

Bedroom One

Double-glazed window to rear, radiator, ceiling light point and laminate flooring.

Bedroom Two

Double-glazed window to rear, radiator and ceiling light point.

Bedroom Three

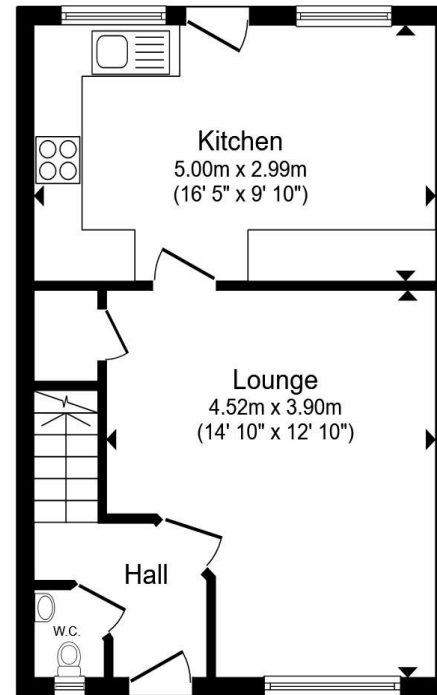
Double-glazed window to front, radiator and ceiling light point.

Bathroom

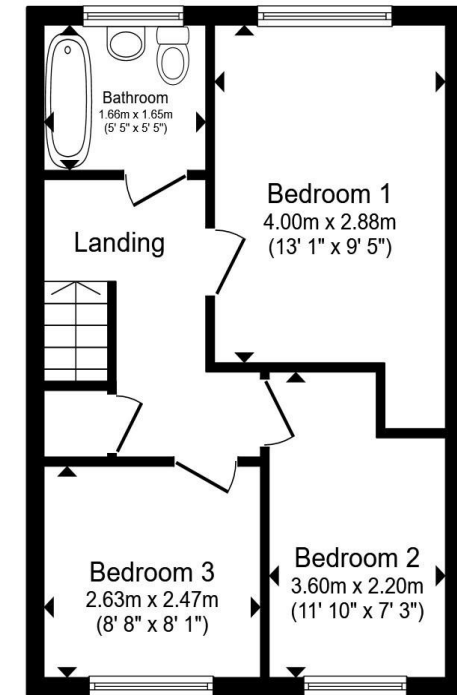
Double-glazed window to rear, radiator, spotlights, panelled bath with shower over, low level w.c., pedestal sink and laminate flooring.

Garden

Paved patio to rear garden, grassed area with paving and shed, mature shrubs and trees, enclosed by fencing.



Ground Floor



First Floor

Total floor area 76.1 m² (819 sq.ft.) approx

This floor plan is for illustrative purposes only. It is not drawn to scale. Any measurements, floor areas (including any total floor area), openings and orientation are approximate. No details are guaranteed, they cannot be relied upon for any purpose and they do not form part of any agreement. No liability is taken for any error, omission or misstatement. A party must rely upon its own inspection(s). Powered by www.propertybox.io



view this property online shipways.co.uk/Property/CAB112447



welcome to

Berrowside Road, Birmingham

- MODERN SEMI-DETACHED PROPERTY
- THREE BEDROOMS
- DRIVEWAY
- DINING KITCHEN
- DOWNSTAIRS WC

Tenure: Freehold EPC Rating: Awaiting
Council Tax Band: C

offers over

£250,000



Please note the marker reflects the
postcode not the actual property

view this property online shipways.co.uk/Property/CAB112447



Property Ref:
CAB112447 - 0003

1. MONEY LAUNDERING REGULATIONS Intending purchasers will be asked to produce identification documentation at a later stage and we would ask for your co-operation in order that there is no delay in agreeing the sale. 2. These particulars do not constitute part or all of an offer or contract. 3. The measurements indicated are supplied for guidance only and as such must be considered incorrect. Potential buyers are advised to recheck measurements before committing to any expense. 4. We have not tested any apparatus, equipment, fixtures or services and it is in the buyers interest to check the working condition of any appliances. 5. Where an EPC, or a Home Report (Scotland only) is held for this property, it is available for inspection at the branch by appointment. If you require a printed version of a Home Report, you will need to pay a reasonable production charge reflecting printing and other costs. 6. We are not able to offer an opinion either written or verbal on the content of these reports and this must be obtained from your legal representative. 7. Whilst we take care in preparing these reports, a buyer should ensure that his/her legal representative confirms as soon as possible all matters relating to title including the extent and boundaries of the property and other important matters before exchange of contracts.

Shipways is a trading name of Sequence (UK) Limited which is registered in England and Wales under company number 4268443, Registered Office is Cumbria House, 16-20 Hockliffe Street, Leighton Buzzard, Bedfordshire, LU7 1GN. VAT Registration Number is 500 2481 05.


shipways



0121 747 4722



castlebromwich@shipways.co.uk



258 Chester Road, Castle Bromwich,
BIRMINGHAM, West Midlands, B36 0JE



shipways.co.uk