









An attractive three bedroom semi-detached house, providing spacious accommodation within the ever popular Hastings Hill. Internally briefly comprising of an entrance porch, hall with staircase to the first floor, lounge opening through to dining room, modern breakfasting kitchen, utility room (accessed via the garage), three first floor bedrooms and a contemporary shower room. Externally there is a garden to the front with a driveway, a garage and to the rear there is a delightful garden with patio seating area. This convenient area is well placed for local amenities as well as connections to Sunderland City Centre and major road links including the A19. With no upper chain involved, we highly advise viewing as matter of urgency to avoid disappointment.

MAIN ROOMS AND DIMENSIONS

Ground Floor

Access via UPVC entrance door into

Entrance Porch

UPVC inner door to hall.

Reception Hall



Radiator, storage cupboard, and stairs leading to the first floor.

Lounge 12'4" x 13'1"



Double glazed window to the front elevation, double radiator, feature fireplace and open plan access into the dining room.

Dining Room 8'2" x 10'5"



UPVC double glazed French patio doors opening onto the rear garden and double radiator.

Breakfasting Kitchen 14'1" x 9'3"



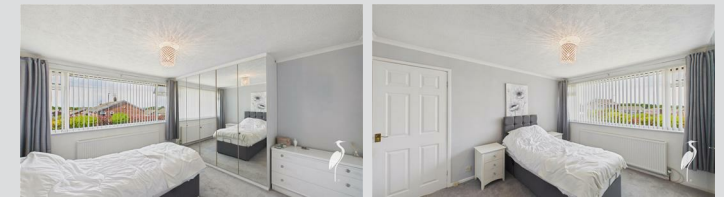
Fitted with a range of wall and base units with worktops over incorporating 1 1/2 bowl stainless steel sink and drainer unit with mixer tap. Integrated oven with electric hob and extractor hood, plus low-level fridge. Double radiator, pantry cupboard, double glazed window to the rear elevation, and door providing access to the garage leading through to utility room.

First Floor Landing



Double glazed window to the side elevation and access point to loft.

Bedroom 1 12'7" x 11'6"



Double glazed window to the front elevation, radiator and built-in mirrored fronted wardrobes.

Bedroom 2 8'10" x 11'2"



Double glazed window to the rear elevation and radiator.

Bedroom 3 7'5" x 8'0"



Double glazed window to the front elevation and radiator.

Visit www.peterheron.co.uk or call 01915103323

Tried. Trusted. Recommended. City Branch 20 Fawcett Street Sunderland SR1 1RH Fulwell Branch 15 Sea Road Fulwell Sunderland SR6 9BS

MAIN ROOMS AND DIMENSIONS

Shower Room



Modern suite comprising dual-head waterfall shower cubicle and vanity unit incorporating a low level WC and hand wash basin. Chrome heated towel rail and double glazed window to the rear elevation.

Outside



Lawned garden to the front with block paved driveway leading to attached garage whilst to the rear an attractive garden with patio seating area.

Garage 26'2" x 7'11"



Spacious garage accessed from the front via roller shutter door and an internal door leading to the utility room.

Utility Room 15'5" x 7'4"



Double glazed window, UPVC door to the rear garden, and radiator. Housing the wall mounted Baxi boiler and providing space for a washing machine, tumble dryer, and fridge freezer.

Council Tax Band

The Council Tax Band is Band C.

Tenure Freehold

We are advised by the Vendors that the property is Freehold. Any prospective purchaser should clarify this with their Solicitor.

Important Notice - Particulars

Peter Heron Ltd for themselves and for the vendors of this property whose agents they are, give notice that:- The particulars are set out for general guidance only for the intending Purchasers and do not constitute part of an offer or contract. Whilst we endeavour to make our sales particulars accurate and reliable, if there is anything of particular importance which you feel may influence your decision to purchase, please contact the office and we will be pleased to check the information. Do so particularly, if contemplating travelling some distance to view the property. All descriptions, dimensions, references to conditions and necessary permissions for use and occupation and other details are given in good faith, and are believed to be correct, however any intending purchasers should not rely on them that statements are representations of fact, but must satisfy themselves by inspection or otherwise as to the correctness of each of them. Independent property size verification is recommended.

Lease details, service charges and ground rent (where

applicable) are given as a guide only and should be checked and confirmed by your Solicitor prior to exchange of contracts. No person in the employment of Peter Heron Ltd has any authority to make or give any representation or warranty whatever in relation to this property or these particulars, nor to enter into any contract on behalf of Peter Heron Ltd, nor into any contract on behalf of the Vendor. The copyright of all details and photographs remain exclusive to Peter Heron Ltd.

Please note that in the event the purchaser uses the services of Peter Heron Conveyancing in the purchase of their home, Peter Heron Ltd will be paid a completion commission of £300.00 by Movewithus Ltd.

Fawcett Street Viewings

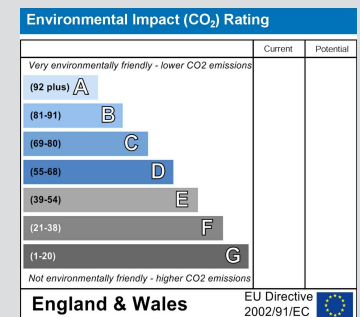
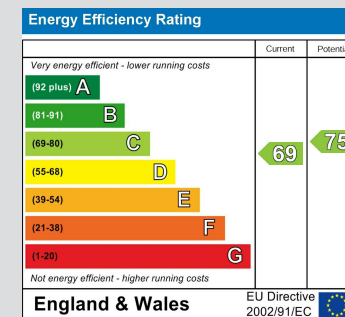
To arrange an appointment to view this property please contact our Fawcett Street branch on 0191 510 3323 or book viewing online at peterheron.co.uk

Opening Times

Monday to Friday 9.00am - 5.00pm Saturday 9.00am - 12noon

Ombudsman

Peter Heron Estate Agents are members of The Property Ombudsman and subscribe to The Property Ombudsman Code of Practice.



Visit www.peterheron.co.uk or call 01915103323

MAIN ROOMS AND DIMENSIONS



Visit www.peterheron.co.uk or call **01915103323**

Tried. Trusted. Recommended. City Branch 20 Fawcett Street Sunderland SR1 1RH Fulwell Branch 15 Sea Road Fulwell Sunderland SR6 9BS

Approximate total area⁽¹⁾

109.6 m²

1179 ft²

(1) Excluding balconies and terraces

Calculations reference the RICS IPMS 3C standard. Measurements are approximate and not to scale. This floor plan is intended for illustration only.

GIRAFFE360

