



POYNDERS ROAD, SW4

£550,000

- Two bedrooms
- Spacious reception
- Well presented
- First floor
- Share of freehold
- Energy rating: C





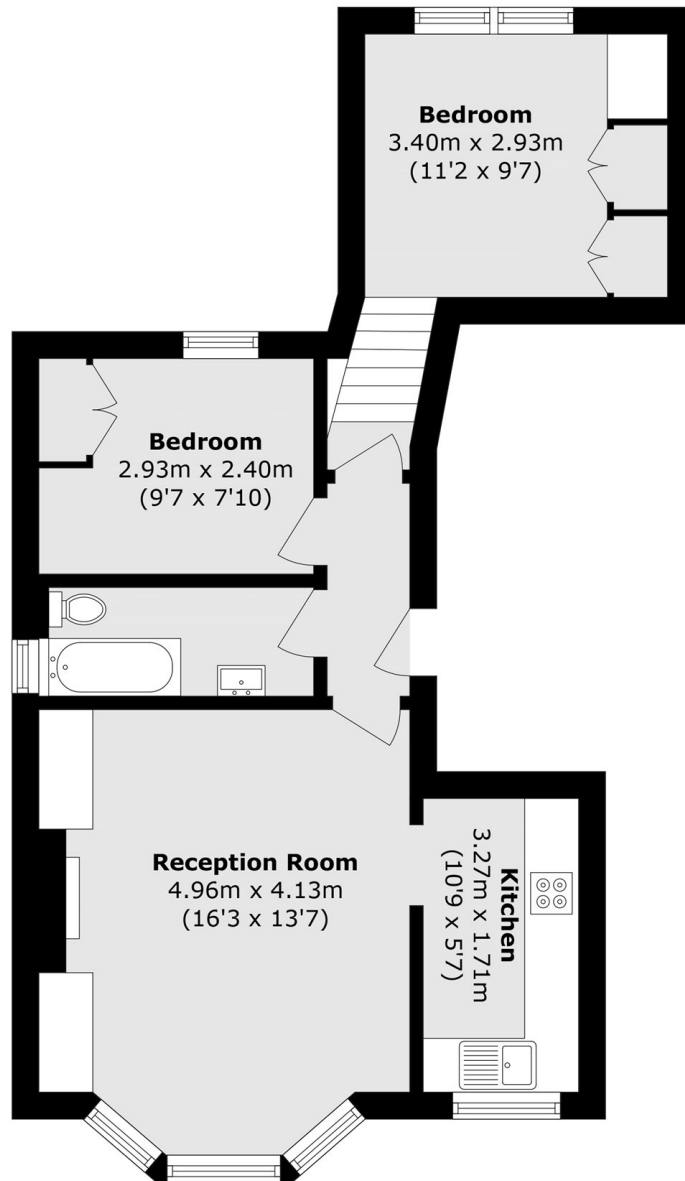
ABOUT THE HOME

A beautifully presented, two bedroom period conversion flat on the first floor of an attractive double fronted house. This property has been thoughtfully modernised, offering a bright and spacious open plan living room, two double bedrooms with built-in wardrobes, outside bike storage and easy access to local amenities and transport links.

Poynders Road is conveniently located for the green open space of Clapham Common and the popular array of independent shops, cafés and bars on Abbeville Road. Clapham South (Northern line) Underground (0.4 mile) serves the City and West End, while several regular bus routes run nearby. The amenities of Clapham High Street and Old Town are also close at hand.







Total area (approx.): 51.9 sq. m (558.6 sq. ft)

JACKSONS CLAPHAM

73 Abbeville Road, London,

SW4 9JN

Sales: 020 8487 3177

Lettings: 020 8487 3178

Energy Rating: C We aim to make our particulars both accurate and reliable. However they are not guaranteed; nor do they form part of an offer or contract. If you require clarification on any points then please contact us, especially if you're traveling some distance to view. Please note that appliances and heating systems have not been tested and therefore no warranties can be given as to their good working order.