



seddon's

8 Fore Street, Tiverton, Devon, EX16 6LH



5 Everett Place, Tiverton, Devon, EX16 6UN

Asking Price £525,000

- No Onward Chain!
- 4 bedrooms
- Spacious kitchen, separate utility
- Large rear garden
- Sought after area
- Beautiful detached house in Tiverton
- 2 reception rooms
- 2 bathrooms
- Double garage, private parking
- Convenient for local amenities

Sales, Lettings, Mortgages:

Bampton 01398 332006 | Cullompton 01884 32100 | Tiverton 01884 253500



5 Everett Place, Tiverton EX16 6UN

Situated within a popular residential area of Tiverton, 5 Everett Place is a well presented home offering a perfect mix of comfortable modern living and practical space, ideal for families, or those looking to downsize without compromise.



Council Tax Band: E



The property welcomes you with a bright and inviting entrance hallway, leading through to a spacious living room filled with natural light and double doors leading out to the large back garden.

To the rear of the property is a well-appointed kitchen/dining area, which provides ample storage, workspace, and room for a dining table, creating a sociable heart of the home. Just off from the kitchen is a convenient utility area, with convenient internal access through to the double garage.

Upstairs, there are four well-proportioned bedrooms, each with built in storage, thoughtfully designed to maximise space and comfort. The principal bedroom provides a lovely space to unwind, while the additional bedrooms are perfectly suited for children or guests. A good size family bathroom completes the upper floor.

Externally, 5 Everett Place benefits from a private rear garden, offering a low-maintenance outdoor space ideal for al fresco dining or relaxing in the warmer months. To the front, there is a small lawned area along with convenient parking and a double garage, adding to the practicality of this wonderful home.

Located within easy reach of Tiverton town centre, the property enjoys access to a range of local amenities, including shops, schools, and transport links, while also being close to beautiful Devon countryside, offering the best of both town and rural living.

With no onward chain, this is a fantastic opportunity to acquire a well-balanced home in a desirable location.

Services:
Mains electricity, gas, water and drainage

Tenure:
Freehold

Council Tax:
Band E

Local Authority:
Mid Devon District Council 01884 252555

Directions

What3words: ///signal.rating.bench

Viewings

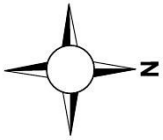
Viewings by arrangement only. Call 01884 253500 to make an appointment.

EPC Rating

C

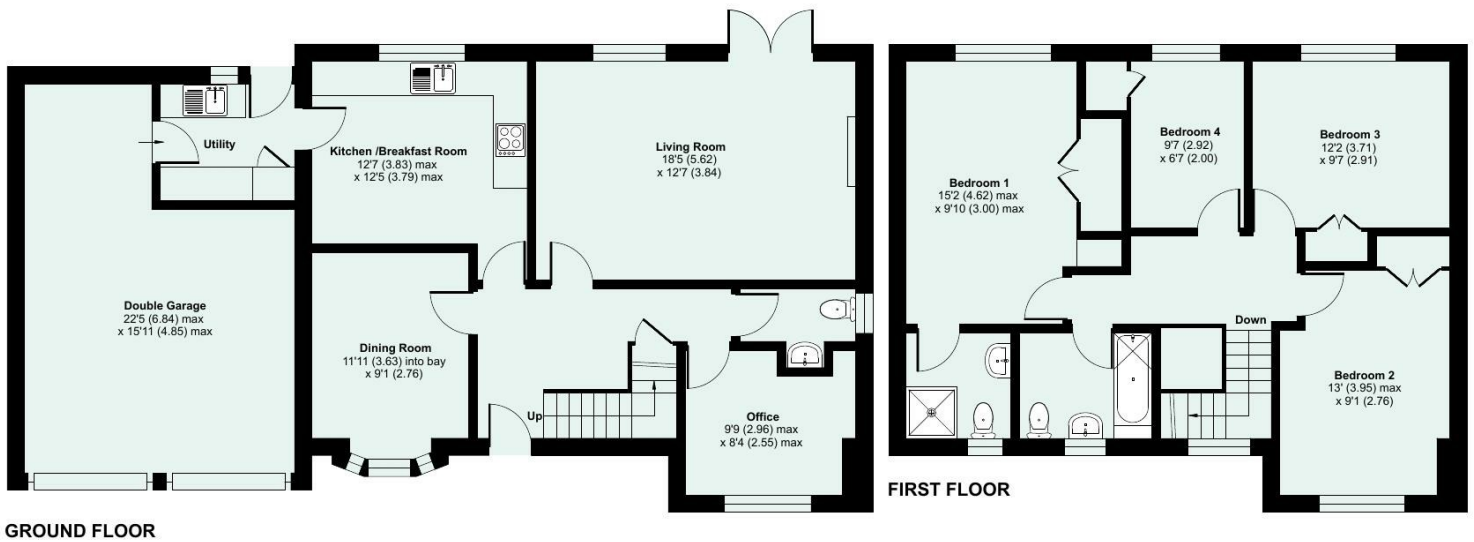
Energy Efficiency Rating		Current	Potential
Very energy efficient - lower running costs			
(92 plus) A			
(81-91) B			
(69-80) C		78	81
(55-68) D			
(39-54) E			
(21-38) F			
(1-20) G			
Not energy efficient - higher running costs			
England & Wales		EU Directive 2002/91/EC	





Approximate Area = 1491 sq ft / 138.5 sq m
Garage = 290 sq ft / 26.9 sq m
Total = 1781 sq ft / 165.4 sq m

For identification only - Not to scale



Floor plan produced in accordance with RICS Property Measurement 2nd Edition, incorporating International Property Measurement Standards (IPMS2 Residential). © nichecom 2026. Produced for Seddon Estate Agents LLP. REF: 1465194

