



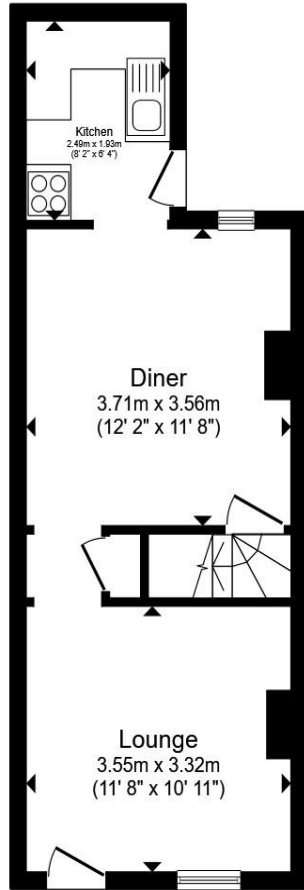
**Prince Street, Wisbech PE13 2AY**

## Welcome to

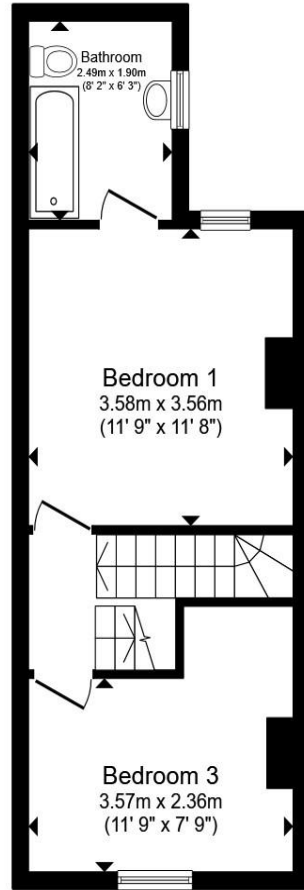
### Prince Street, Wisbech

Situated within a convenient cul de sac location close to the town centre, this established semi-detached house offers spacious and versatile accommodation arranged over three floors. The property is available with the added advantage of no onward chain. The home provides three bedrooms, one of which occupies the second floor, creating a flexible space ideal as a principal bedroom, guest suite, teenager's room or home office. The remaining accommodation includes two reception rooms, offering ample space for both living and dining, making the property well suited to family life. Further benefits include gas radiator central heating and PVCu double glazing, ensuring comfort and efficiency throughout the year. Externally, the property enjoys a tucked-away position within this established residential setting, while remaining within easy reach of local amenities, schools and the town centre. Offering generous accommodation, character and a convenient location, this is an excellent opportunity for a wide range of buyers seeking a home with flexible living space.

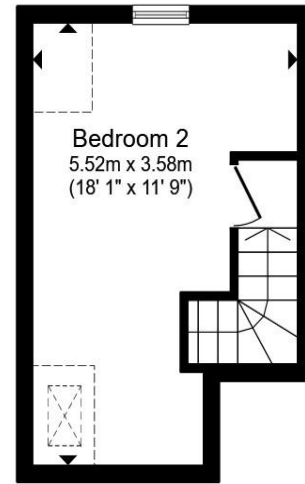




**Ground Floor**



**First Floor**



**Second Floor**

- Lounge**
- Inner Hallway**
- Dining Room**
- Kitchen**
- First Floor Landing**
- Bedroom One**
- Bedroom Two**
- Bathroom**
- Second Floor Lnding**
- Bedroom Three**

Total floor area 85.0 m<sup>2</sup> (915 sq.ft.) approx

This floor plan is for illustrative purposes only. It is not drawn to scale. Any measurements, floor areas (including any total floor area), openings and orientation are approximate. No details are guaranteed, they cannot be relied upon for any purpose and they do not form part of any agreement. No liability is taken for any error, omission or misstatement. A party must rely upon its own inspection(s). Powered by [www.propertybox.io](http://www.propertybox.io)



## Welcome to

### Prince Street, Wisbech

- Established semi-detached house
- Three bedrooms
- Two reception rooms
- Cul de sac location close to town
- No onward chain

Tenure: Freehold EPC Rating: D  
Council Tax Band: A

# £130,000



Please note the marker reflects the postcode not the actual property

**view this property online** [williambrown.co.uk/Property/WSB128747](http://williambrown.co.uk/Property/WSB128747)



Property Ref:  
WSB128747 - 0002

1. MONEY LAUNDERING REGULATIONS Intending purchasers will be asked to produce identification documentation at a later stage and we would ask for your co-operation in order that there is no delay in agreeing the sale. 2. These particulars do not constitute part or all of an offer or contract. 3. The measurements indicated are supplied for guidance only and as such must be considered incorrect. Potential buyers are advised to recheck measurements before committing to any expense. 4. We have not tested any apparatus, equipment, fixtures or services and it is in the buyers interest to check the working condition of any appliances. 5. Where an EPC, or a Home Report (Scotland only) is held for this property, it is available for inspection at the branch by appointment. If you require a printed version of a Home Report, you will need to pay a reasonable production charge reflecting printing and other costs. 6. We are not able to offer an opinion either written or verbal on the content of these reports and this must be obtained from your legal representative. 7. Whilst we take care in preparing these reports, a buyer should ensure that his/her legal representative confirms as soon as possible all matters relating to title including the extent and boundaries of the property and other important matters before exchange of contracts.

William H Brown is a trading name of Sequence (UK) Limited which is registered in England and Wales under company number 4268443, Registered Office is Cumbria House, 16-20 Hockliffe Street, Leighton Buzzard, Bedfordshire, LU7 1GN. VAT Registration Number is 500 2481 05.



william h brown



**01945 464451**



[Wisbech@williambrown.co.uk](mailto:Wisbech@williambrown.co.uk)



20 High Street, WISBECH, Cambridgeshire,  
PE13 1DE



[williambrown.co.uk](http://williambrown.co.uk)