



Green Abbey, Hade Edge Holmfirth HD9 2SH

welcome to

Green Abbey, Hade Edge Holmfirth

SPACIOUS DETACHED STONE BUILT RESIDENCE BOASTING STUNNING VIEWS TO THE FRONT AND REAR AFFORDING FIVE BEDROOM ACCOMMODATION ENHANCED BY GENEROUS GARDENS AND TWIN GARAGE. LOCATED IN THE POPULAR VILLAGE OF HADE EDGE.

Summary

A beautifully positioned five-bedroom detached residence enjoying an enviable cul-de-sac setting, located in the highly sought-after village of Hade Edge on the fringes of Holmfirth.

This impressive family home offers generous and versatile accommodation throughout, perfectly suited to modern living. Occupying a peaceful location, the property benefits from far-reaching views across the surrounding countryside to front and rear, creating a wonderful sense of space and tranquillity.

The ground floor briefly comprises three well-proportioned reception areas, providing flexibility for modern family life. The dining space is an ideal room for hosting & spending time as family. A spacious family room and comfortable lounge are complemented by a delightful conservatory, which enjoys views over the rear garden and surrounding landscape, creating an ideal space for relaxing or entertaining year-round.

To the first floor, there are five generous bedrooms, offering ample space for family and guests. The principal bedroom benefits from an en suite shower room and dressing room, while the remaining bedrooms are served by the family bathroom. Externally, the property is equally impressive. A twin garage provides excellent parking and storage, alongside additional driveway space. To the rear, the gardens take full advantage of the fabulous outlook, offering a private and scenic setting ideal for outdoor relaxation and entertaining.

Situated in Hade Edge, the property enjoys access to a range of well-regarded local schooling, making it particularly appealing for families. Holmfirth town centre is just a short distance away, offering a wide variety of amenities, restaurants, and shops. Additionally, the location benefits from excellent connectivity to major road networks, making

commuting to surrounding towns and cities straightforward. This is an outstanding opportunity to acquire a spacious family home in a desirable semi-rural location with exceptional views and convenience. Early viewing is highly recommended.

Accommodation Entrance Hall

On entry there is a wooden floor, central heating radiator, inset ceiling lighting, decorative coving to the ceiling and a staircase ascends to the first floor.

Cloaks/W.C

Coloured low level w/c and hand washbasin with tiled surrounds, a vinyl floor covering, radiator and double glazed obscure window.

Dining Room

11' 4" x 9' 6" (3.45m x 2.90m)

A beautifully presented dining room enjoying a pleasant outlook to the front aspect. Finished with attractive wooden flooring and contemporary decor, this versatile space comfortably accommodates a family dining table and chairs, making it ideal for both everyday meals and formal entertaining. Conveniently positioned adjacent to the breakfast kitchen, the layout creates an excellent flow for modern family living and social gatherings.

Breakfast Kitchen

15' 7" max x 13' 3" max (4.75m max x 4.04m max)

Featuring an attractive range of wall and base units with complementary worksurfaces incorporating a sink unit with mixer tap. There are tiled surrounds and floor covering and appliances include the double oven and microwave oven, induction hob with extractor hood, integral dishwasher, fridge freezer and microwave whilst the room also has a breakfast bar, underfloor heating, a door leading to

the garage and is double glazed to front aspect.

Living Room

17' 7" x 13' 3" (5.36m x 4.04m)

A fabulous reception room with a vast amount of space for freestanding furniture. Currently carpeted the focal point of the room is electric log effect living flame fire. There is inset ceiling lighting, coving to ceiling, a central heating radiator and double glazing to rear aspect.

Family Room

17' 8" x 9' 6" (5.38m x 2.90m)

A comfortable lounge are complimented by a delightful conservatory, which enjoys views over the rear garden and surrounding landscape, creating an ideal space for relaxing or entertaining year-round.

Conservatory

17' 7" max x 10' 4" (5.36m max x 3.15m)

Beautifully positioned overlooking the rear garden there two central heating radiators and double doors leading out into the garden.

First Floor Bedroom One

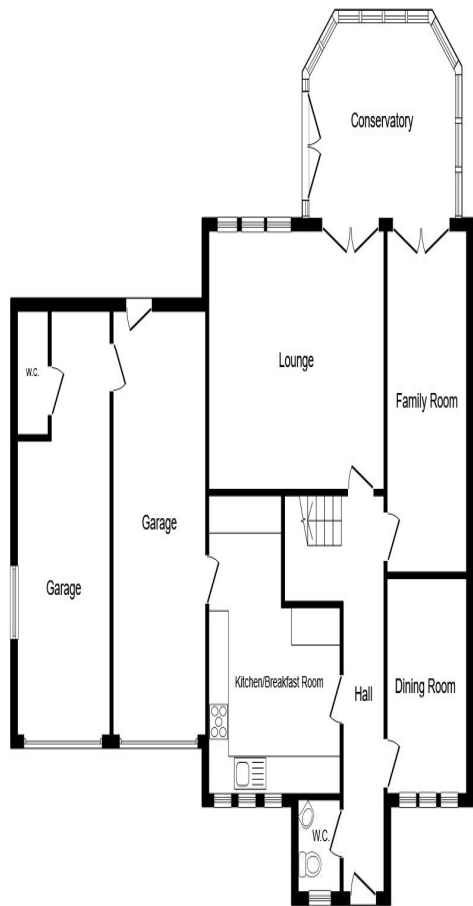
18' 6" x 14' 10" (5.64m x 4.52m)

A beautifully proportioned principle bedroom with a large bank of fitted wardrobes, central heating radiator and double glazing to rear aspect taking advantage of the fabulous outlook.

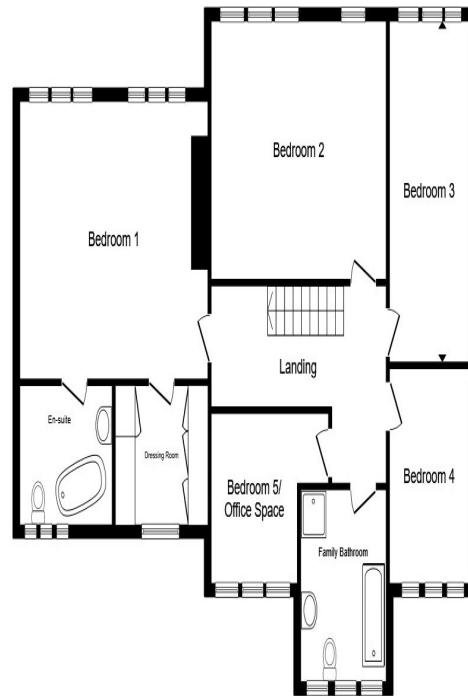
En Suite/Bathroom

9' 5" x 7' 2" (2.87m x 2.18m)

White suite comprising of low level w/c, hand washbasin and corner bath. The is also a quadrant shower cubicle and the room is further complemented by the tiled surrounds and there is



Ground Floor



First Floor

Total floor area 244.7 m² (2,634 sq.ft.) approx

This floor plan is for illustrative purposes only. It is not drawn to scale. Any measurements, floor areas (including any total floor area), openings and orientation are approximate. No details are guaranteed, they cannot be relied upon for any purpose and they do not form part of any agreement. No liability is taken for any error, omission or misstatement. A party must rely upon its own inspection(s). Powered by www.propertybox.io



welcome to
Green Abbey,
Hade Edge Holmfirth

- Modern Stone Built Detached Residence
- Spacious Five Bedroom Accommodation
- Panoramic Outlook
- Twin Garage/Driveway
- Cul De Sac Position

Tenure: Freehold EPC Rating: C
Council Tax Band: F

£600,000

directions to this property:

Leave Holmfirth via Victoria Street and turn right on to Dunford Road. Once in Hade Edge, bear right and continue on Dunford Road. Green Abbey can be found on the right hand side.



view this property online williamhbrown.co.uk/Property/HMF107837



Property Ref:
HMF107837 - 0016

1. MONEY LAUNDERING REGULATIONS Intending purchasers will be asked to produce identification documentation at a later stage and we would ask for your co-operation in order that there is no delay in agreeing the sale. 2. These particulars do not constitute part or all of an offer or contract. 3. The measurements indicated are supplied for guidance only and as such must be considered incorrect. Potential buyers are advised to recheck measurements before committing to any expense. 4. We have not tested any apparatus, equipment, fixtures or services and it is in the buyers interest to check the working condition of any appliances. 5. Where an EPC, or a Home Report (Scotland only) is held for this property, it is available for inspection at the branch by appointment. If you require a printed version of a Home Report, you will need to pay a reasonable production charge reflecting printing and other costs. 6. We are not able to offer an opinion either written or verbal on the content of these reports and this must be obtained from your legal representative. 7. Whilst we take care in preparing these reports, a buyer should ensure that his/her legal representative confirms as soon as possible all matters relating to title including the extent and boundaries of the property and other important matters before exchange of contracts.

William H Brown is a trading name of Sequence (UK) Limited which is registered in England and Wales under company number 4268443. Registered Office is Cumbria House, 16-20 Hockliffe Street, Leighton Buzzard, Bedfordshire, LU7 1GN. VAT Registration Number is 500 2481 05.



william h brown



01484 687818



holmfirth@williamhbrown.co.uk



34 Victoria Street, HOLMFIRTH, W Yorks, HD9 7DE



williamhbrown.co.uk



Green Abbey, Hade Edge Holmfirth HD9 2SH

welcome to

Green Abbey, Hade Edge Holmfirth

SPACIOUS DETACHED STONE BUILT RESIDENCE BOASTING STUNNING VIEWS TO THE FRONT AND REAR AFFORDING FIVE BEDROOM ACCOMMODATION ENHANCED BY GENEROUS GARDENS AND TWIN GARAGE. LOCATED IN THE POPULAR VILLAGE OF HADE EDGE.

Summary

A beautifully positioned five-bedroom detached residence enjoying an enviable cul-de-sac setting, located in the highly sought-after village of Hade Edge on the fringes of Holmfirth.

This impressive family home offers generous and versatile accommodation throughout, perfectly suited to modern living. Occupying a peaceful location, the property benefits from far-reaching views across the surrounding countryside to front and rear, creating a wonderful sense of space and tranquillity.

The ground floor briefly comprises three well-proportioned reception areas, providing flexibility for modern family life. The dining space is an ideal room for hosting & spending time as family. A spacious family room and comfortable lounge are complemented by a delightful conservatory, which enjoys views over the rear garden and surrounding landscape, creating an ideal space for relaxing or entertaining year-round.

To the first floor, there are five generous bedrooms, offering ample space for family and guests. The principal bedroom benefits from an en suite shower room and dressing room, while the remaining bedrooms are served by the family bathroom. Externally, the property is equally impressive. A twin garage provides excellent parking and storage, alongside additional driveway space. To the rear, the gardens take full advantage of the fabulous outlook, offering a private and scenic setting ideal for outdoor relaxation and entertaining.

Situated in Hade Edge, the property enjoys access to a range of well-regarded local schooling, making it particularly appealing for families. Holmfirth town centre is just a short distance away, offering a wide variety of amenities, restaurants, and shops. Additionally, the location benefits from excellent connectivity to major road networks, making

commuting to surrounding towns and cities straightforward. This is an outstanding opportunity to acquire a spacious family home in a desirable semi-rural location with exceptional views and convenience. Early viewing is highly recommended.

Accommodation Entrance Hall

On entry there is a wooden floor, central heating radiator, inset ceiling lighting, decorative coving to the ceiling and a staircase ascends to the first floor.

Cloaks/W.C

Coloured low level w/c and hand washbasin with tiled surrounds, a vinyl floor covering, radiator and double glazed obscure window.

Dining Room

11' 4" x 9' 6" (3.45m x 2.90m)

A beautifully presented dining room enjoying a pleasant outlook to the front aspect. Finished with attractive wooden flooring and contemporary decor, this versatile space comfortably accommodates a family dining table and chairs, making it ideal for both everyday meals and formal entertaining. Conveniently positioned adjacent to the breakfast kitchen, the layout creates an excellent flow for modern family living and social gatherings.

Breakfast Kitchen

15' 7" max x 13' 3" max (4.75m max x 4.04m max)

Featuring an attractive range of wall and base units with complementary worksurfaces incorporating a sink unit with mixer tap. There are tiled surrounds and floor covering and appliances include the double oven and microwave oven, induction hob with extractor hood, integral dishwasher, fridge freezer and microwave whilst the room also has a breakfast bar, underfloor heating, a door leading to

the garage and is double glazed to front aspect.

Living Room

17' 7" x 13' 3" (5.36m x 4.04m)

A fabulous reception room with a vast amount of space for freestanding furniture. Currently carpeted the focal point of the room is electric log effect living flame fire. There is inset ceiling lighting, coving to ceiling, a central heating radiator and double glazing to rear aspect.

Family Room

17' 8" x 9' 6" (5.38m x 2.90m)

A comfortable lounge are complimented by a delightful conservatory, which enjoys views over the rear garden and surrounding landscape, creating an ideal space for relaxing or entertaining year-round.

Conservatory

17' 7" max x 10' 4" (5.36m max x 3.15m)

Beautifully positioned overlooking the rear garden there two central heating radiators and double doors leading out into the garden.

First Floor Bedroom One

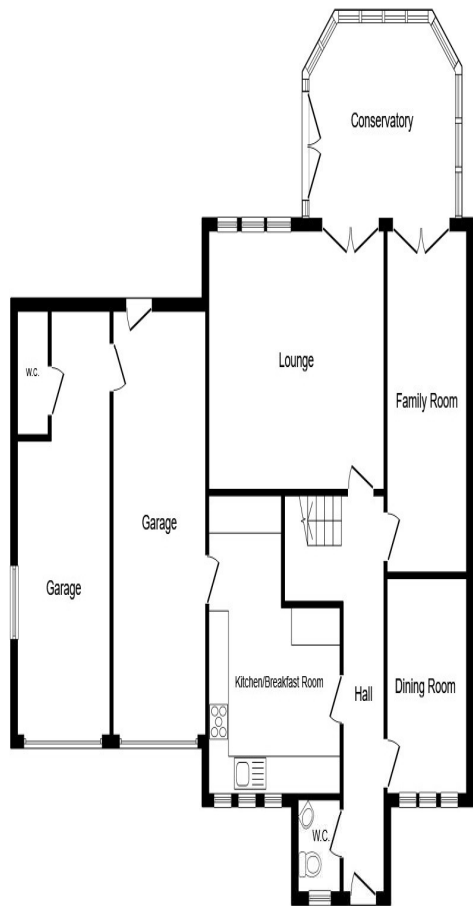
18' 6" x 14' 10" (5.64m x 4.52m)

A beautifully proportioned principle bedroom with a large bank of fitted wardrobes, central heating radiator and double glazing to rear aspect taking advantage of the fabulous outlook.

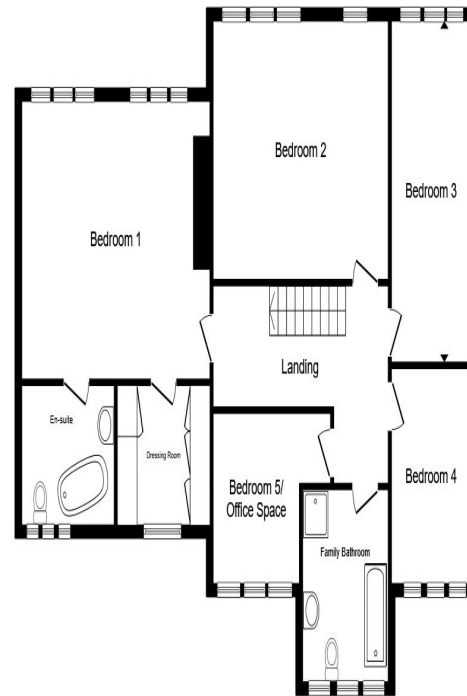
En Suite/Bathroom

9' 5" x 7' 2" (2.87m x 2.18m)

White suite comprising of low level w/c, hand washbasin and corner bath. The is also a quadrant shower cubicle and the room is further complemented by the tiled surrounds and there is



Ground Floor



First Floor

Total floor area 244.7 m² (2,634 sq.ft.) approx

This floor plan is for illustrative purposes only. It is not drawn to scale. Any measurements, floor areas (including any total floor area), openings and orientation are approximate. No details are guaranteed, they cannot be relied upon for any purpose and they do not form part of any agreement. No liability is taken for any error, omission or misstatement. A party must rely upon its own inspection(s). Powered by www.propertybox.io



welcome to
Green Abbey,
Hade Edge Holmfirth

- Modern Stone Built Detached Residence
- Spacious Five Bedroom Accommodation
- Panoramic Outlook
- Twin Garage/Driveway
- Cul De Sac Position

Tenure: Freehold EPC Rating: C
Council Tax Band: F

£600,000

directions to this property:

Leave Holmfirth via Victoria Street and turn right on to Dunford Road. Once in Hade Edge, bear right and continue on Dunford Road. Green Abbey can be found on the right hand side.



view this property online williamhbrown.co.uk/Property/HMF107837



Property Ref:
HMF107837 - 0016

1. MONEY LAUNDERING REGULATIONS Intending purchasers will be asked to produce identification documentation at a later stage and we would ask for your co-operation in order that there is no delay in agreeing the sale. 2. These particulars do not constitute part or all of an offer or contract. 3. The measurements indicated are supplied for guidance only and as such must be considered incorrect. Potential buyers are advised to recheck measurements before committing to any expense. 4. We have not tested any apparatus, equipment, fixtures or services and it is in the buyers interest to check the working condition of any appliances. 5. Where an EPC, or a Home Report (Scotland only) is held for this property, it is available for inspection at the branch by appointment. If you require a printed version of a Home Report, you will need to pay a reasonable production charge reflecting printing and other costs. 6. We are not able to offer an opinion either written or verbal on the content of these reports and this must be obtained from your legal representative. 7. Whilst we take care in preparing these reports, a buyer should ensure that his/her legal representative confirms as soon as possible all matters relating to title including the extent and boundaries of the property and other important matters before exchange of contracts.

William H Brown is a trading name of Sequence (UK) Limited which is registered in England and Wales under company number 4268443. Registered Office is Cumbria House, 16-20 Hockliffe Street, Leighton Buzzard, Bedfordshire, LU7 1GN. VAT Registration Number is 500 2481 05.



william h brown



01484 687818



holmfirth@williamhbrown.co.uk



34 Victoria Street, HOLMFIRTH, W Yorks, HD9 7DE



williamhbrown.co.uk



Green Abbey, Hade Edge Holmfirth HD9 2SH

welcome to

Green Abbey, Hade Edge Holmfirth

SPACIOUS DETACHED STONE BUILT RESIDENCE BOASTING STUNNING VIEWS TO THE FRONT AND REAR AFFORDING FIVE BEDROOM ACCOMMODATION ENHANCED BY GENEROUS GARDENS AND TWIN GARAGE. LOCATED IN THE POPULAR VILLAGE OF HADE EDGE.

Summary

A beautifully positioned five-bedroom detached residence enjoying an enviable cul-de-sac setting, located in the highly sought-after village of Hade Edge on the fringes of Holmfirth.

This impressive family home offers generous and versatile accommodation throughout, perfectly suited to modern living. Occupying a peaceful location, the property benefits from far-reaching views across the surrounding countryside to front and rear, creating a wonderful sense of space and tranquillity.

The ground floor briefly comprises three well-proportioned reception areas, providing flexibility for modern family life. The dining space is an ideal room for hosting & spending time as family. A spacious family room and comfortable lounge are complemented by a delightful conservatory, which enjoys views over the rear garden and surrounding landscape, creating an ideal space for relaxing or entertaining year-round.

To the first floor, there are five generous bedrooms, offering ample space for family and guests. The principal bedroom benefits from an en suite shower room and dressing room, while the remaining bedrooms are served by the family bathroom. Externally, the property is equally impressive. A twin garage provides excellent parking and storage, alongside additional driveway space. To the rear, the gardens take full advantage of the fabulous outlook, offering a private and scenic setting ideal for outdoor relaxation and entertaining.

Situated in Hade Edge, the property enjoys access to a range of well-regarded local schooling, making it particularly appealing for families. Holmfirth town centre is just a short distance away, offering a wide variety of amenities, restaurants, and shops. Additionally, the location benefits from excellent connectivity to major road networks, making

commuting to surrounding towns and cities straightforward. This is an outstanding opportunity to acquire a spacious family home in a desirable semi-rural location with exceptional views and convenience. Early viewing is highly recommended.

Accommodation Entrance Hall

On entry there is a wooden floor, central heating radiator, inset ceiling lighting, decorative coving to the ceiling and a staircase ascends to the first floor.

Cloaks/W.C

Coloured low level w/c and hand washbasin with tiled surrounds, a vinyl floor covering, radiator and double glazed obscure window.

Dining Room

11' 4" x 9' 6" (3.45m x 2.90m)

A beautifully presented dining room enjoying a pleasant outlook to the front aspect. Finished with attractive wooden flooring and contemporary decor, this versatile space comfortably accommodates a family dining table and chairs, making it ideal for both everyday meals and formal entertaining. Conveniently positioned adjacent to the breakfast kitchen, the layout creates an excellent flow for modern family living and social gatherings.

Breakfast Kitchen

15' 7" max x 13' 3" max (4.75m max x 4.04m max)

Featuring an attractive range of wall and base units with complementary worksurfaces incorporating a sink unit with mixer tap. There are tiled surrounds and floor covering and appliances include the double oven and microwave oven, induction hob with extractor hood, integral dishwasher, fridge freezer and microwave whilst the room also has a breakfast bar, underfloor heating, a door leading to

the garage and is double glazed to front aspect.

Living Room

17' 7" x 13' 3" (5.36m x 4.04m)

A fabulous reception room with a vast amount of space for freestanding furniture. Currently carpeted the focal point of the room is electric log effect living flame fire. There is inset ceiling lighting, coving to ceiling, a central heating radiator and double glazing to rear aspect.

Family Room

17' 8" x 9' 6" (5.38m x 2.90m)

A comfortable lounge are complimented by a delightful conservatory, which enjoys views over the rear garden and surrounding landscape, creating an ideal space for relaxing or entertaining year-round.

Conservatory

17' 7" max x 10' 4" (5.36m max x 3.15m)

Beautifully positioned overlooking the rear garden there two central heating radiators and double doors leading out into the garden.

First Floor Bedroom One

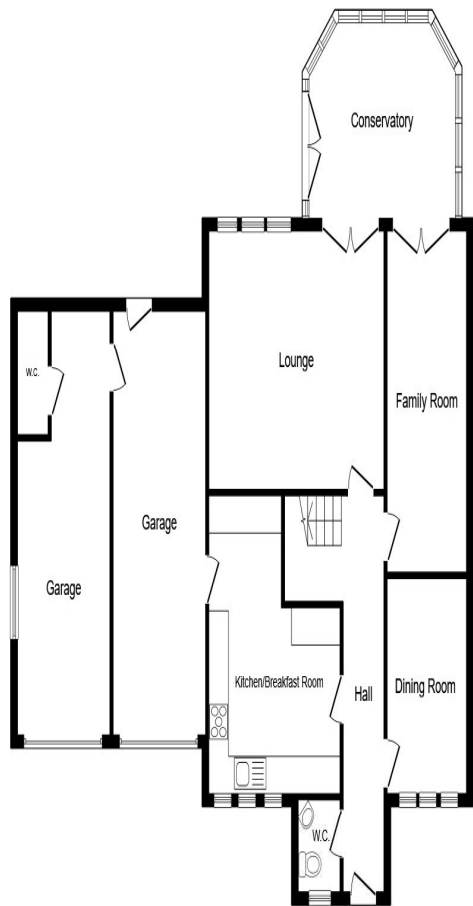
18' 6" x 14' 10" (5.64m x 4.52m)

A beautifully proportioned principle bedroom with a large bank of fitted wardrobes, central heating radiator and double glazing to rear aspect taking advantage of the fabulous outlook.

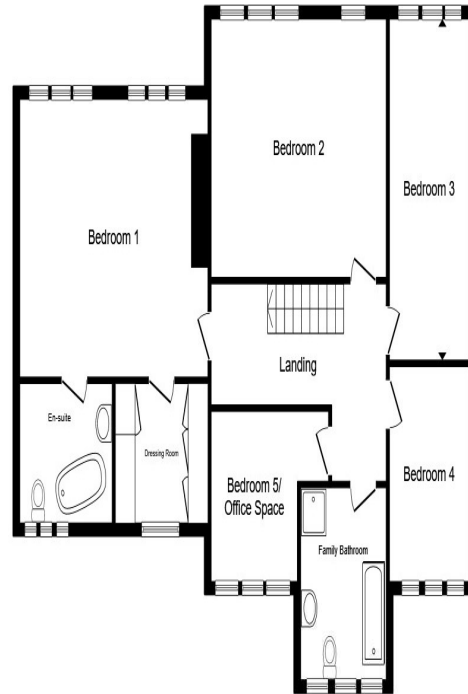
En Suite/Bathroom

9' 5" x 7' 2" (2.87m x 2.18m)

White suite comprising of low level w/c, hand washbasin and corner bath. The is also a quadrant shower cubicle and the room is further complemented by the tiled surrounds and there is



Ground Floor



First Floor

Total floor area 244.7 m² (2,634 sq.ft.) approx

This floor plan is for illustrative purposes only. It is not drawn to scale. Any measurements, floor areas (including any total floor area), openings and orientation are approximate. No details are guaranteed, they cannot be relied upon for any purpose and they do not form part of any agreement. No liability is taken for any error, omission or misstatement. A party must rely upon its own inspection(s). Powered by www.propertybox.io



welcome to
Green Abbey,
Hade Edge Holmfirth

- Modern Stone Built Detached Residence
- Spacious Five Bedroom Accommodation
- Panoramic Outlook
- Twin Garage/Driveway
- Cul De Sac Position

Tenure: Freehold EPC Rating: C
Council Tax Band: F

£600,000

directions to this property:

Leave Holmfirth via Victoria Street and turn right on to Dunford Road. Once in Hade Edge, bear right and continue on Dunford Road. Green Abbey can be found on the right hand side.



view this property online williamhbrown.co.uk/Property/HMF107837



Property Ref:
HMF107837 - 0016

1. MONEY LAUNDERING REGULATIONS Intending purchasers will be asked to produce identification documentation at a later stage and we would ask for your co-operation in order that there is no delay in agreeing the sale. 2. These particulars do not constitute part or all of an offer or contract. 3. The measurements indicated are supplied for guidance only and as such must be considered incorrect. Potential buyers are advised to recheck measurements before committing to any expense. 4. We have not tested any apparatus, equipment, fixtures or services and it is in the buyers interest to check the working condition of any appliances. 5. Where an EPC, or a Home Report (Scotland only) is held for this property, it is available for inspection at the branch by appointment. If you require a printed version of a Home Report, you will need to pay a reasonable production charge reflecting printing and other costs. 6. We are not able to offer an opinion either written or verbal on the content of these reports and this must be obtained from your legal representative. 7. Whilst we take care in preparing these reports, a buyer should ensure that his/her legal representative confirms as soon as possible all matters relating to title including the extent and boundaries of the property and other important matters before exchange of contracts.

William H Brown is a trading name of Sequence (UK) Limited which is registered in England and Wales under company number 4268443. Registered Office is Cumbria House, 16-20 Hockliffe Street, Leighton Buzzard, Bedfordshire, LU7 1GN. VAT Registration Number is 500 2481 05.



william h brown



01484 687818



holmfirth@williamhbrown.co.uk



34 Victoria Street, HOLMFIRTH, W Yorks, HD9 7DE



williamhbrown.co.uk