

est 1979

Jeremy
Leaf & Co.



Heath View, London

Offers Over £1,150,000

- 5 spacious bedrooms
- 3 reception rooms
- Close to local amenities
- Highly desired school catchment
- Quiet residential area
- 4 modern bathrooms
- Ideal family home
- Easy access to transport
- Green open spaces nearby
- Viewings are highly recommended!

98 High Road, London, N2 9EB
020 8444 5222

eastfinchley@jeremyleaf.co.uk
<https://www.jeremyleaf.co.uk/>

Heath View, London, N2 0QD

A substantial five-bedroom family home situated in the highly desirable Heath View, East Finchley. Offering generous living accommodation throughout, the property comprises five well-proportioned bedrooms, three spacious reception rooms, and four bathrooms, making it ideal for growing families.

The versatile layout provides excellent space for both everyday living and entertaining, while the bright interiors create a welcoming atmosphere throughout. The property further benefits from a sought-after residential location within the enviable catchment area for highly regarded local schools - including The Archer Academy, Martin Primary School, and Holy Trinity Church of England Primary School - as well as close proximity to excellent local amenities, green open spaces, and convenient transport links.

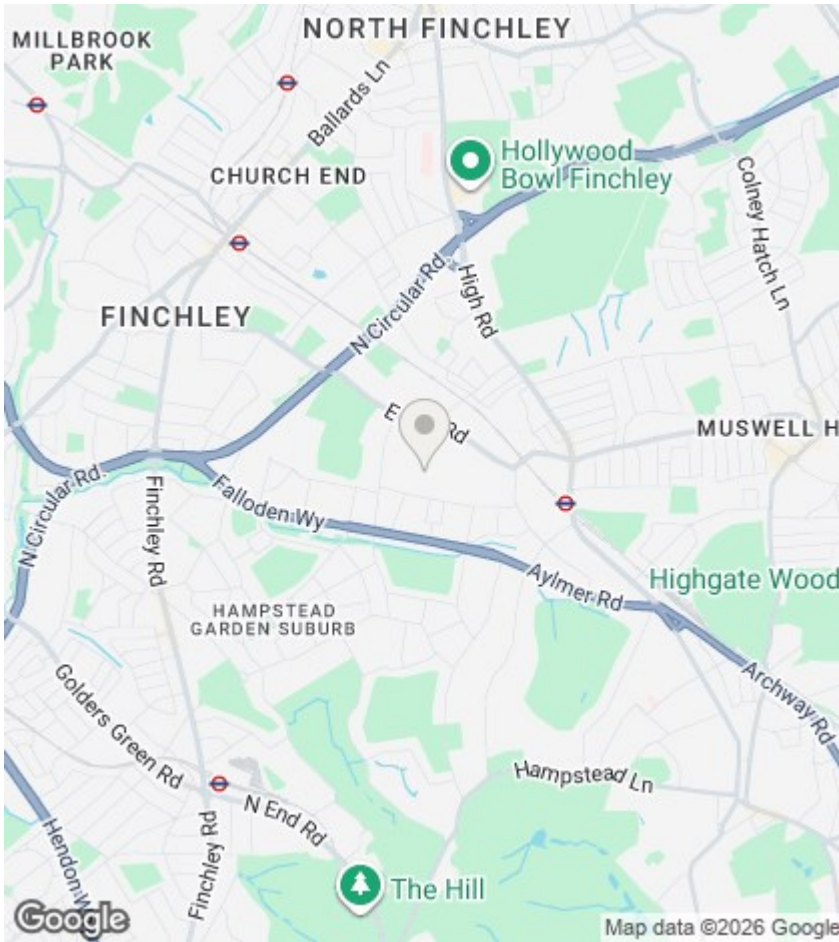
Ideally positioned within a mile of East Finchley Underground Station, this impressive home offers the perfect balance of suburban tranquillity and access to Central London. An excellent opportunity to acquire a spacious family residence in one of North London's most desirable locations.



Council Tax Band: E







Directions

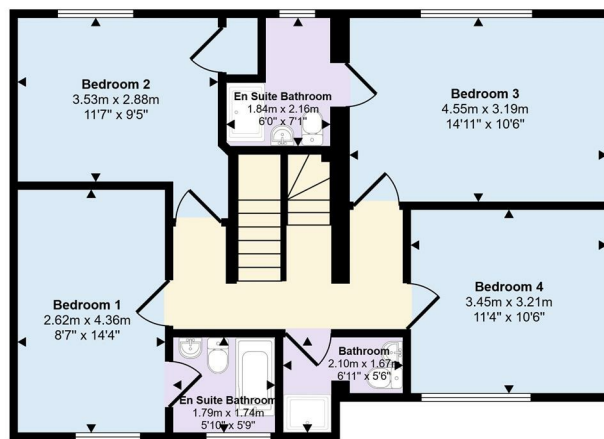
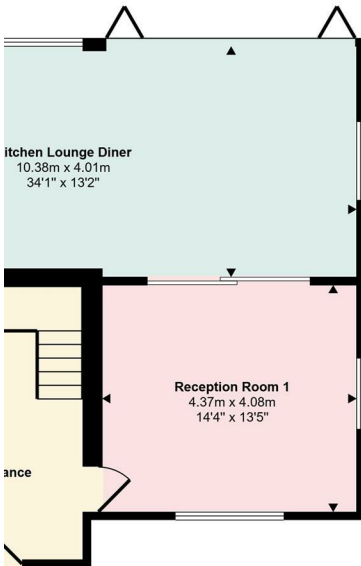
Viewings

Viewings by arrangement only. Call 020 8444 5222 to make an appointment.

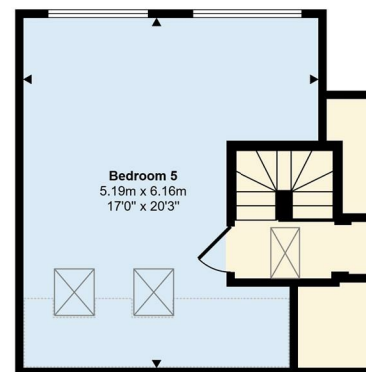
EPC Rating:

Energy Efficiency Rating		Current	Potential
Very energy efficient - lower running costs			
(92 plus) A			
(81-91) B			
(69-80) C			
(55-68) D			
(39-54) E			
(21-38) F			
(1-20) G			
Not energy efficient - higher running costs			
England & Wales		EU Directive 2002/91/EC	

Approx Gross Internal Area
223 sq m / 2404 sq ft



First Floor
Approx 73 sq m / 782 sq ft



Second Floor
Approx 56 sq m / 603 sq ft

This floorplan is only for illustrative purposes and is not to scale. Measurements of rooms, doors, windows, and any items are approximate and no responsibility is taken for any error, omission or mis-statement. Icons of items such as bathroom suites are representations only and may not look like the real items. Made with Made Snappy 360.