



Merton Place, Littlebury Saffron Walden Offers in excess of £425,000 **Freehold**



Key Features



- Beautifully presented
- Two reception rooms
- Refurbished throughout
- Downstairs shower room plus family bathroom
- Modern well equipped kitchen

Beautifully presented three-bedroom family home situated in the highly sought-after village of Littlebury. The current owners have thoughtfully transformed the property into a bright, spacious and stylish home, perfect for modern family living.

The property benefits from a rear extension, currently used as a versatile playroom/home office, along with the added convenience of a downstairs shower room. The spacious lounge/diner is filled with natural light and provides an ideal space for both everyday living and entertaining, while the modern kitchen has been recently updated. Upstairs offers three generously sized bedrooms and a well-appointed family bathroom.

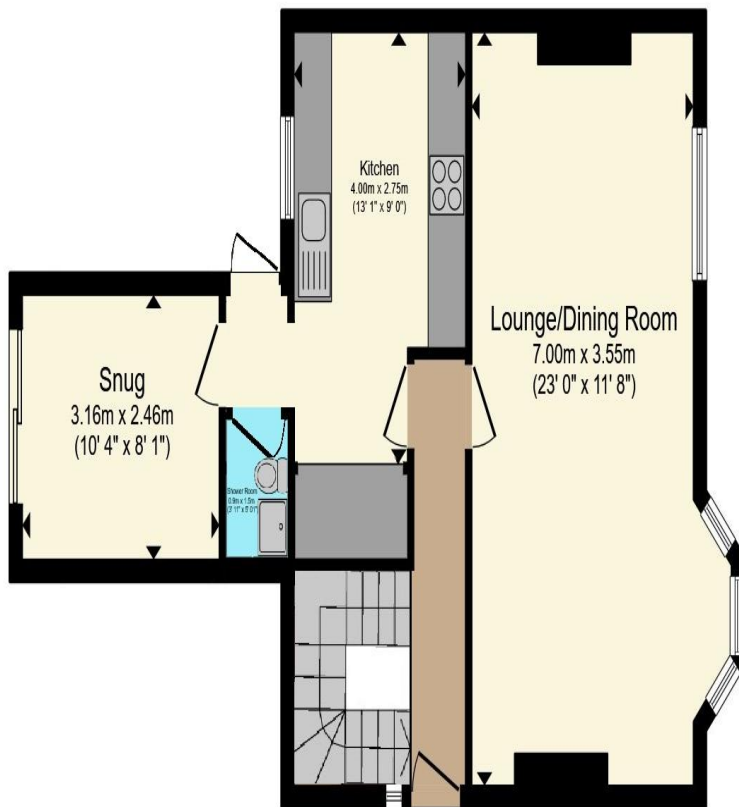


Outside, the large rear garden features a newly installed decking area and an extensive lawn backing onto open fields, creating a wonderful outdoor space to enjoy.

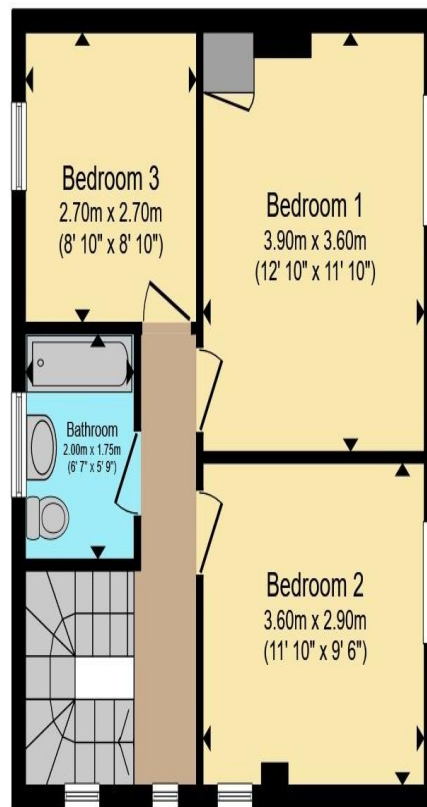
Ready to move straight into, this superb home combines contemporary living with a desirable village location.

Littlebury is a popular north-west Essex village with many period properties, a public house and parish church and has a great community spirit. The market town of Saffron Walden is approximately 2.5 miles away, providing shops, schools, recreational facilities and other amenities. Cambridge, approximately 14 miles away, provides first class education, further amenities, shopping centres, etc. The mainline railway station at Audley End is approximately 2 miles away providing train service to London Liverpool Street. The M11 (J9) is approximately 3 miles from the village.





Ground Floor



First Floor

Total floor area 98.6 sq.m. (1,061 sq.ft.) approx

This floor plan is for illustrative purposes only. It is not drawn to scale. Any measurements, floor areas (including any total floor area), openings and orientation are approximate. No details are guaranteed, they cannot be relied upon for any purpose and they do not form part of any agreement. No liability is taken for any error, omission or misstatement. A party must rely upon its own inspection(s). Powered by www.propertybox.io



To view this property call Kevin Henry on:
01799 513632

Selling your property?

Contact us to arrange a FREE home valuation.

 01799 513632

 1 Market Street, SAFFRON WALDEN, Essex, CB10 1JB

 sales@kevinhenry.co.uk

 www.Kevinhenry.co.uk



 SCAN ME



Kevin Henry is a trading name of Sharman Quinney Holdings Limited which is registered in England and Wales under company number 4174227, Registered Office is Cumbria House, 16-20 Hockliffe Street, Leighton Buzzard, Bedfordshire, LU7 1GN. VAT Registration Number is 500 2481 05.

1: These particulars do not constitute part or all of an offer or contract. 2: The measurements indicated are supplied for guidance only and as such must be considered incorrect. 3: Potential buyers are advised to recheck the measurements before committing to any expense. 4: Kevin Henry has not tested any apparatus, equipment, fixtures, fittings or services and it is the buyers interests to check the working condition of any appliances. 5: Kevin Henry has not sought to verify the legal title of the property and buyers must obtain verification from their legal representative. 6: Intending purchasers will be asked to produce identification documentation at a later stage and we would ask your co-operation in order that there will be no delay in agreeing the sale. Ref: SAF103978 - 0006

