



Clements Grove, Waterlooville PO8 9FF

welcome to

Clements Grove, Waterloooville

No forward chain! Modern two bed semi with open-plan living, WC, allocated parking, south-facing garden and a garden cabin with approved business use.

Entrance Hall

Stairs leading to first floor. Doors to:

Kitchen

Double glazed window to front aspect. Range of wall and base units with work surface over incorporating sink unit. Fully integrated washing machine, dishwasher, low level oven, hob with extractor hood over and fridge/freezer. Laminate flooring.

W C

Double glazed window to front aspect. Low level WC, wash hand basin.

Lounge / Diner

Double glazed French doors and windows to rear garden. Laminate flooring, radiator. Double glazed window to side aspect, under stair storage cupboard, space for table and chairs.

First Floor Landing

Doors to:

Bedroom One

Double glazed window to rear aspect. Built-in wardrobes, carpet flooring, radiator.

Bedroom Two

Double glazed window to front aspect. Built-in wardrobes and further cupboards, radiator, carpet flooring.

Bathroom

Double glazed window to side aspect. Panel enclosed bath with shower over, low level WC, pedestal wash hand basin, radiator.

Outside

Front

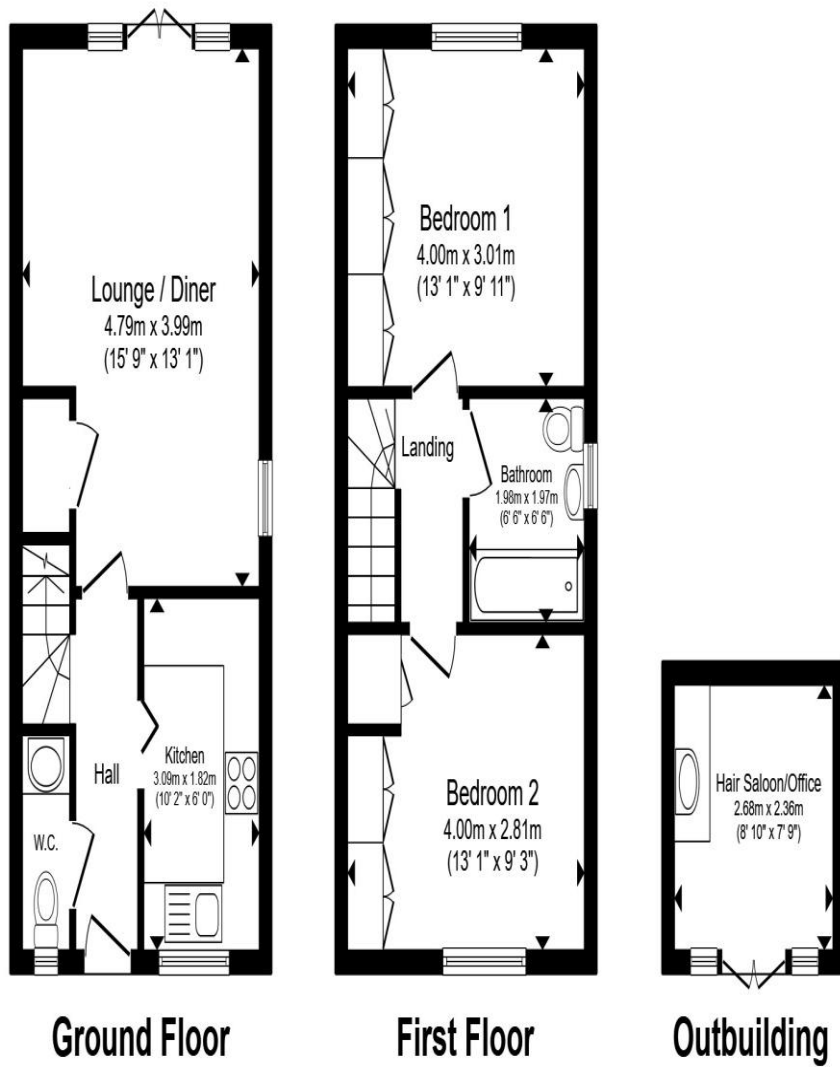
Three steps up to front door. Front garden space with bin storage. Allocated parking.

Rear Garden

Laid to lawn with patio, with space for patio furniture. Outbuilding.

Outbuilding

Currently fully fitted out as a hair salon.



Total floor area 70.5 m² (759 sq.ft.) approx

This floor plan is for illustrative purposes only. It is not drawn to scale. Any measurements, floor areas (including any total floor area), openings and orientation are approximate. No details are guaranteed, they cannot be relied upon for any purpose and they do not form part of any agreement. No liability is taken for any error, omission or misstatement. A party must rely upon its own inspection(s). Powered by www.propertybox.io



welcome to
Clements Grove,
Waterlooville

- No Forward Chain
- Two Bed Semi Detached House
- Garden Cabin set up as Hair Salon
- Downstairs WC, Upstairs Bathroom
- South Facing Garden

Tenure: Freehold EPC Rating: B
Council Tax Band: B

guide price

£340,000



view this property online fox-and-sons.co.uk/Property/WLV109775



Property Ref:
WLV109775 - 0005

1. MONEY LAUNDERING REGULATIONS Intending purchasers will be asked to produce identification documentation at a later stage and we would ask for your co-operation in order that there is no delay in agreeing the sale. 2. These particulars do not constitute part or all of an offer or contract. 3. The measurements indicated are supplied for guidance only and as such must be considered incorrect. Potential buyers are advised to recheck measurements before committing to any expense. 4. We have not tested any apparatus, equipment, fixtures or services and it is in the buyers interest to check the working condition of any appliances. 5. Where an EPC, or a Home Report (Scotland only) is held for this property, it is available for inspection at the branch by appointment. If you require a printed version of a Home Report, you will need to pay a reasonable production charge reflecting printing and other costs. 6. We are not able to offer an opinion either written or verbal on the content of these reports and this must be obtained from your legal representative. 7. Whilst we take care in preparing these reports, a buyer should ensure that his/her legal representative confirms as soon as possible all matters relating to title including the extent and boundaries of the property and other important matters before exchange of contracts.

Fox & Sons is a trading name of Sequence (UK) Limited which is registered in England and Wales under company number 4268443, Registered Office is Cumbria House, 16-20 Hockliffe Street, Leighton Buzzard, Bedfordshire, LU7 1GN. VAT Registration Number is 500 2481 05.


fox & sons



023 9226 2447



Waterlooville@fox-and-sons.co.uk



81B London Road, WATERLOOVILLE,
Hampshire, PO7 7ES



fox-and-sons.co.uk